

Parts Manual
45-8212EN
03/30/2016

DOTCO[®]

12-10 Series
Lint Pickers



For additional product information visit our website at <http://www.apextoolgroup.com>

Dotco®
Nomenclature

	12	X	1	0	XX	-	36	XX	OH
<p><u>Product Classification</u> 12 = Ergonomic Tool</p>									
<p><u>Throttle Type</u> L = Locking Lever S = Locking Lever (same as "L")</p>									
<p><u>Motor Size</u> 1 = 0.3 hp</p>									
<p><u>Handle Style</u> 0 = Straight</p>									
<p><u>Speed Options (RPM)</u> Front Exhaust Rear Exhaust 10 = 20,000 31 = 20,000</p>									
<p><u>Termination Code</u> 36 = 300 Series 1/4" Collet</p>									
<p><u>Optional Collet (no extra cost)</u> 08 = 1/8" 14 = 7/32" M6 = 6mm</p>									
<p><u>Overhose Option (extra cost)</u> OH = Overhose (rear exhaust models only)</p>									

The original language of this manual is English.

Product Safety Information:

Intended Use:

This pneumatic material removal tool is to be used only for removing material by utilizing appropriate abrasive wheels, rotary files or other material removal cutting devices.

For product safety information and requirements for grinding without a wheel guard refer to Apex Tool Group, LLC or Apex Tool Group GmbH & Co. OHG documents:

CE-2013, General Safety Material Removal Tools



This product must not be modified in any manner unless approved in writing by Apex Tool Group, LLC or Apex Tool Group GmbH & Co. OHG. All safety devices must be properly installed and maintained in good working order.

EC Declaration of Conformity:

We affirm that this machine is in accordance with the following EC regulations (2006/42/EC). Applied harmonized standards are ISO 12100:2010-11.

The name, job function and address of the person authorized to compile the technical file.

Mr. Vishnu Irigireddy
Director of Global R&D- Mechanical Engineering
Apex Tool Group
670 Industrial Drive
Lexington, SC 29072

Signature: Vishnu Irigireddy
Date: 03/30/2016

Noise and Vibration:

Sound Level:

- 12(-)10 Front Exhaust ≤ 83 dB(A)
- 12(-)10 Rear Exhaust ≤ 81 dB(A)

Vibration:

- 12(-)10 Front Exhaust < 2.5 m/s²
- 12(-)10 Rear Exhaust < 2.5 m/s²

Air Line Lubrication:

Use Apex Tool Group, LLC or Apex Tool Group GmbH & Co. OHG's lightweight air tool oil (available in quantities shown in the following chart) or an SAE-5 lightweight spindle oil.

Part No.	Packaged	Designation
45-0918	1 Quart (0.94 liter)	Air Line Oil
45-0919	1 US Gallon (3.78 liter)	Air Line Oil

Air Supply Line:

Parameter	Description
Air Hose	Minimum inside diameter: 1/4" (4.8mm) Maximum length: 8.0' (2.4 m)
Working pressure range	Performance rated at: 90 psi (620 kPa)
Compressed air	Air quality according to ISO 8573-1, quality class 2.4.3 The compressed air must be clean and dry.

Service and Repair:

Tool service and repair should be performed by an authorized Apex Tool Group, LLC or Apex Tool Group GmbH & Co. OHG Center. Refer to the last page of this manual for locations.

Disposal:



Observe local disposal guidelines for all components of this tool and its packaging.

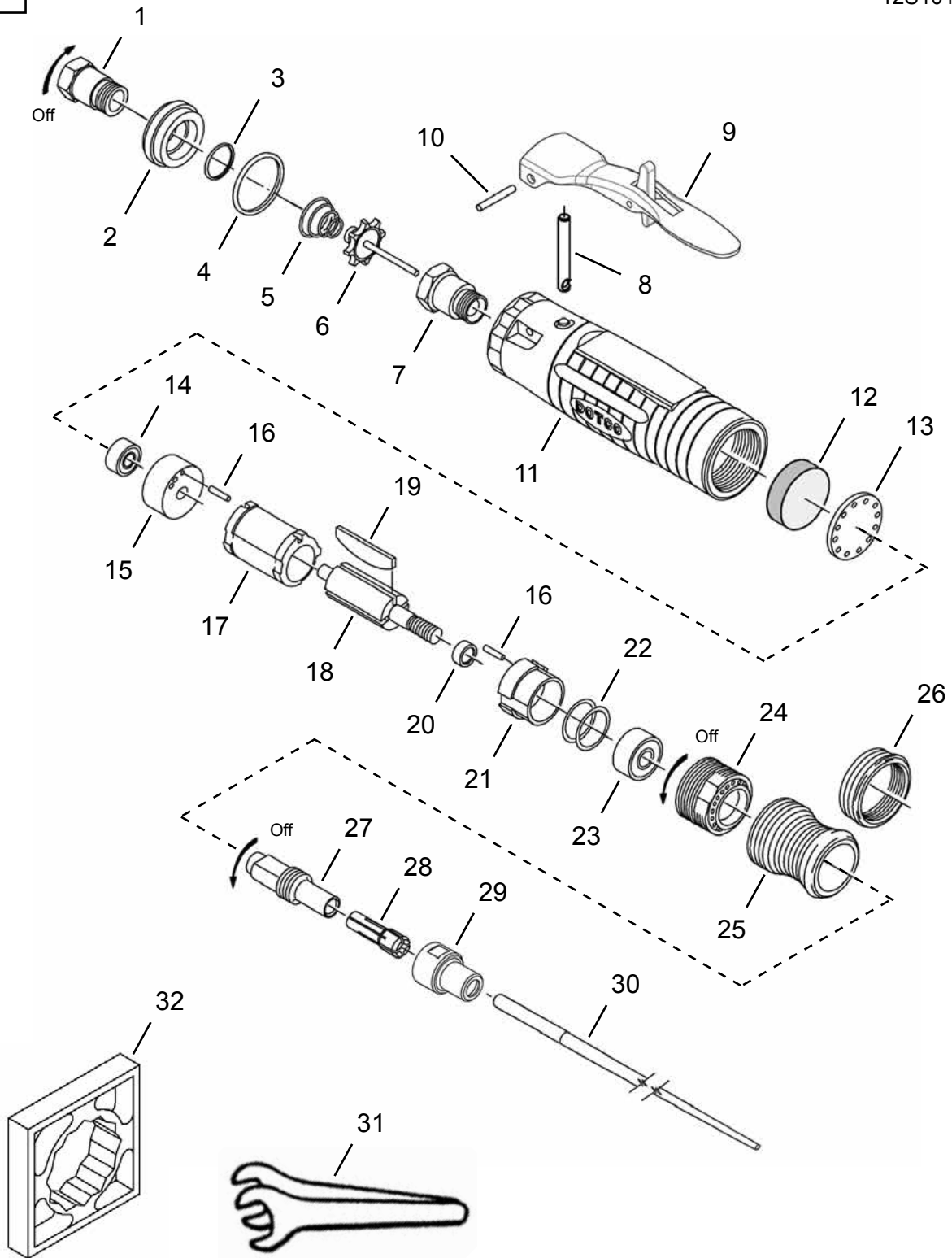
Copyright Protection:

Apex Tool Group, LLC or Apex Tool Group GmbH & Co. OHG reserves the right to modify, supplement or improve this document or the product without prior notice. This document may not be reproduced in any way, shape or form, in full or parts thereof, or copied to another natural or machine readable language or to a data carrier, whether electronic, mechanical, optical or otherwise without the express permission of Apex Tool Group, LLC or Apex Tool Group GmbH & Co. OHG

Dotco®
Lint Picker - Front Exhaust

Models
12L1010-36
12S1010-36

“A”



Dotco®
Lint Picker - Front Exhaust

45-8212EN
03/30/2016

Illustration "A" - Front Exhaust Models

Ref	Number	#	X	EN
				Description
1	01-2505	1	1	Air Inlet Adapter
2	01-2506	1		Exhaust Plug
3	2965	1	3	O-Ring (.750" OD)
4	3036PT	1	3	O-Ring (1.254" OD)
5	01-2519	1	3	Throttle Valve Spring
6	01-2518	1		Throttle Valve
7	01-2504	1		Throttle Valve Seat
8	01-1017	1		Throttle Valve Push Rod
9	01-1267	1	1	Lock Off Lever Assembly
10	1042	1	1	Lever Pin
11	01-1001	1		Motor Housing
12	01-1046	1	3	Filter Disc
13	01-1016	1	2	Filter Retainer
14	504PT	1	2	Ball Bearing
15	1003PT	1		Rear Bearing Plate (includes 1 Ref. 16)
16	1041	2	4	Locating Pin
17	1002PT	1		Cylinder
18	1005S	1		Rotor
19	1006PT	4	12	Rotor Blade
20	1017PT	1	2	Rotor Spacer
21	1004PT	1		Front Bearing Plate (includes 1 Ref. 16)
22	1355	1		Shim Packet
23	538PT	1	2	Ball Bearing
24	2273PT	1		Lock Ring
25	01-1047	1		Collet Guard
26	01-1050	1		Collet Guard (Short - Optional)
27	1054PT	1		Chuck Body
28	Table "A"	1		Collet
29	208196PT	1		Nosepiece Cap
30	14-2181	1		Picker Rod (6")
	14-2182	1		Picker Rod (9")
31	14-0807	1		Wrench (7/16")
	14-0811	1		Wrench (11/16")
32	14-0851	1		Housing Wrench

(#) Quantity

(X) Recommended Spare Parts (quantity shown based on 1-5 tools in operation)

Table "A"

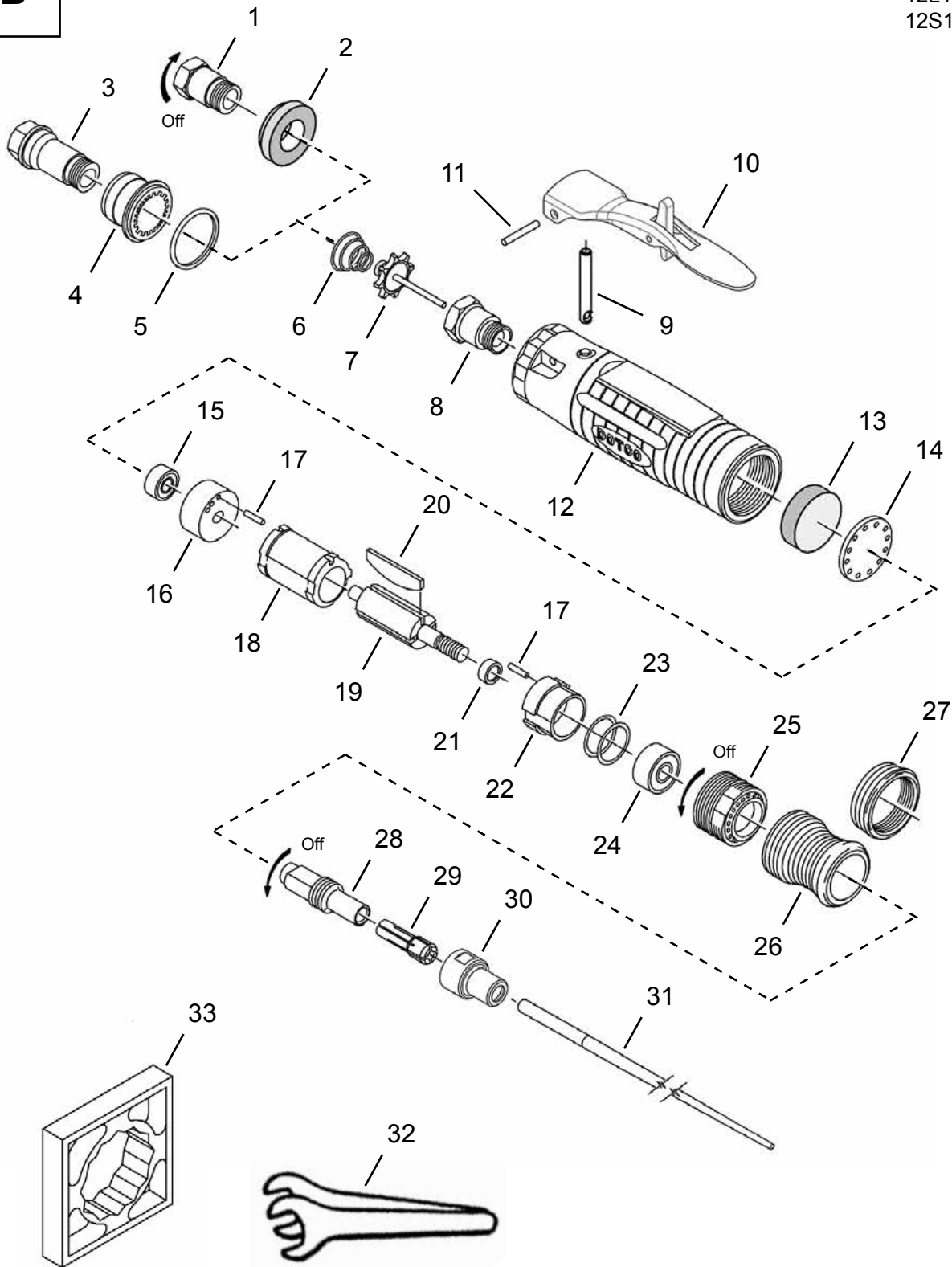
300 Series Optional Collets					
Part No.	Arbor Size	Part No.	Arbor Size	Part No.	Arbor Size
301PT	3/64"	305PT	5/32"	310PT	6mm
302PT	5/64"	306PT	3/16"		
303	3/32"	308PT *	1/4"		
304PT	1/8"	311	3mm		

* Standard Collet

Dotco®
Lint Picker - Rear Exhaust

Models
12L1031-36
12S1031-36

“B”



Dotco®
Lint Picker - Rear Exhaust

45-8212EN
03/30/2016

Illustration "B" - Rear Exhaust Models

Ref	Number	#	X	EN
				Description
1	01-2505	1	1	Air Inlet Adapter
2	01-2520	1	1	Exhaust Diffuser
3	01-1031	1	1	Air Inlet Adapter (Overhose Models)
4	01-1032	1		Muffler (Overhose Models)
5	3036PT	1	3	O-Ring (Overhose Models)
6	01-2519	1	3	Throttle Valve Spring
7	01-2518	1		Throttle Valve
8	01-2504	1		Throttle Valve Seat
9	01-1017	1		Throttle Valve Push Rod
10	01-1267	1	1	Lock Off Lever Assembly
11	1042	1	1	Lever Pin
12	01-1001	1		Motor Housing
13	01-1046	1	3	Filter Disc
14	01-1016	1	2	Filter Retainer
15	504PT	1	2	Ball Bearing
16	1003PT	1		Rear Bearing Plate (includes 1 Ref. 17)
17	1041	2	4	Locating Pin
18	1002PT	1		Cylinder
19	1005S	1		Rotor
20	1906PT	4	12	Rotor Blade
21	1017PT	1	2	Rotor Spacer
22	1004PT	1		Front Bearing Plate (includes 1 Ref. 17)
23	1355	1		Shim Packet
24	538PT	1	2	Ball Bearing
25	1045	1		Lock Ring
26	01-1047	1		Collet Guard
27	01-1050	1		Collet Guard (Short - Optional)
28	1054PT	1		Chuck Body
29	Table "B"	1		Collet
30	208196PT	1		Nosepiece Cap
31	14-2181	1		Picker Rod (6")
	14-2182	1		Picker Rod (9")
32	14-0807	1		Wrench (7/16")
	14-0811	1		Wrench (11/16")
33	14-0851	1		Housing Wrench

(#) Quantity

(X) Recommended Spare Parts (quantity shown based on 1-5 tools in operation)

Table "B"

300 Series Optional Collets					
Part No.	Arbor Size	Part No.	Arbor Size	Part No.	Arbor Size
301PT	3/64"	305PT	5/32"	310PT	6mm
302PT	5/64"	306PT	3/16"		
303	3/32"	308PT *	1/4"		
304PT	1/8"	311	3mm		

* Standard Collet

POWER TOOLS SALES & SERVICE CENTERS

Please note that all locations may not service all products.

Contact the nearest Apex Tool Group Sales & Service Center for the appropriate facility to handle your service requirements.

NORTH AMERICA | SOUTH AMERICA

Detroit, Michigan

Apex Tool Group
2630 Superior Court
Auburn Hills, MI 48236
Phone: +1 (248) 393-5640
Fax: +1 (248) 391-6295

Lexington, South Carolina

Apex Tool Group
670 Industrial Drive
Lexington, SC 29072
Phone: +1 (800) 845-5629
Phone: +1 (919) 387-0099
Fax: +1 (803) 358-7681

Louisville, Kentucky

Apex Tool Group
1000 Glengarry Drive
Suite 150
Fairdale, KY 40118
Phone: +1 (502) 708-3400
apexpowertools.com/service

Canada

Apex Tool Canada, Ltd.
7631 Bath Road
Mississauga, Ontario L4T 3T1
Canada
Phone: (866) 691-6212
Fax: (905) 673-4400

Mexico

Apex Tool Group
Manufacturing México
S. de R.L. de C.V.
Vialidad El Pueblito #103
Parque Industrial Querétaro
Querétaro, QRO 76220
Mexico
Phone: +52 (442) 211 3800
Fax: +52 (800) 685 5560

Brazil

Apex Tool Group
Ind. Com. Ferram, Ltda.
Av. Liberdade, 4055
Zona Industrial Iporanga
Sorocaba, São Paulo
CEP# 18087-170
Brazil
Phone: +55 15 3238 3820
Fax: +55 15 3238 3938

EUROPE | MIDDLE EAST | AFRICA

England

Apex Tool Group
GmbH & Co. OHG
C/O Spline Gauges
Piccadilly, Tamworth
Staffordshire B78 2ER
United Kingdom
Phone: +44 1827 8727 71
Fax: +44 1827 8741 28

France

Apex Tool Group S.A.S.
25 rue Maurice Chevalier
B.P. 28
77831 Ozoir-La-Ferrière
Cedex, France
Phone: +33 1 64 43 22 00
Fax: +33 1 64 43 17 17

Germany

Apex Tool Group
GmbH & Co. OHG
Industriestraße 1
73463 Westhausen
Germany
Phone: +49 (0) 73 63 81 0
Fax: +49 (0) 73 63 81 222

Hungary

Apex Tool Group
Hungária Kft.
Platánfa u. 2
9027 Győr
Hungary
Phone: +36 96 66 1383
Fax: +36 96 66 1135

ASIA PACIFIC

Australia

Apex Tool Group
519 Nurigong Street, Albury
NSW 2640
Australia
Phone: +61 2 6058 0300

China

Apex Power Tool Trading
(Shanghai) Co., Ltd
Building A8, No. 38
Dongsheng Road
Pudong, Shanghai
China 201201
Phone: +86 21 60880320
Fax: +86 21 60880298

India

Apex Power Tools India
Private Limited
Gala No. 1, Plot No. 5
S. No. 234, 235 & 245
Indialand Global
Industrial Park
Taluka-Mulsi, Phase I
Hinjawadi, Pune 411057
Maharashtra, India
Phone: +91 020 66761111

Japan

Apex Tool Group Japan
Korin-Kaikan 5F,
3-6-23 Shibakoen, Minato-Ku,
Tokyo 105-0011, JAPAN
Phone: +81-3-6450-1840
Fax: +81-3-6450-1841

Korea

Apex Tool Group Korea
#1503, Hibrand Living Bldg.,
215 Yangjae-dong,
Seocho-gu, Seoul 137-924,
Korea
Phone: +82-2-2155-0250
Fax: +82-2-2155-0252

Apex Tool Group, LLC

1000 Lufkin Road
Apex, NC 27539
Phone: +1 (919) 387-0099
Fax: +1 (919) 387-2614
www.apexpowertools.com

DOTCO®