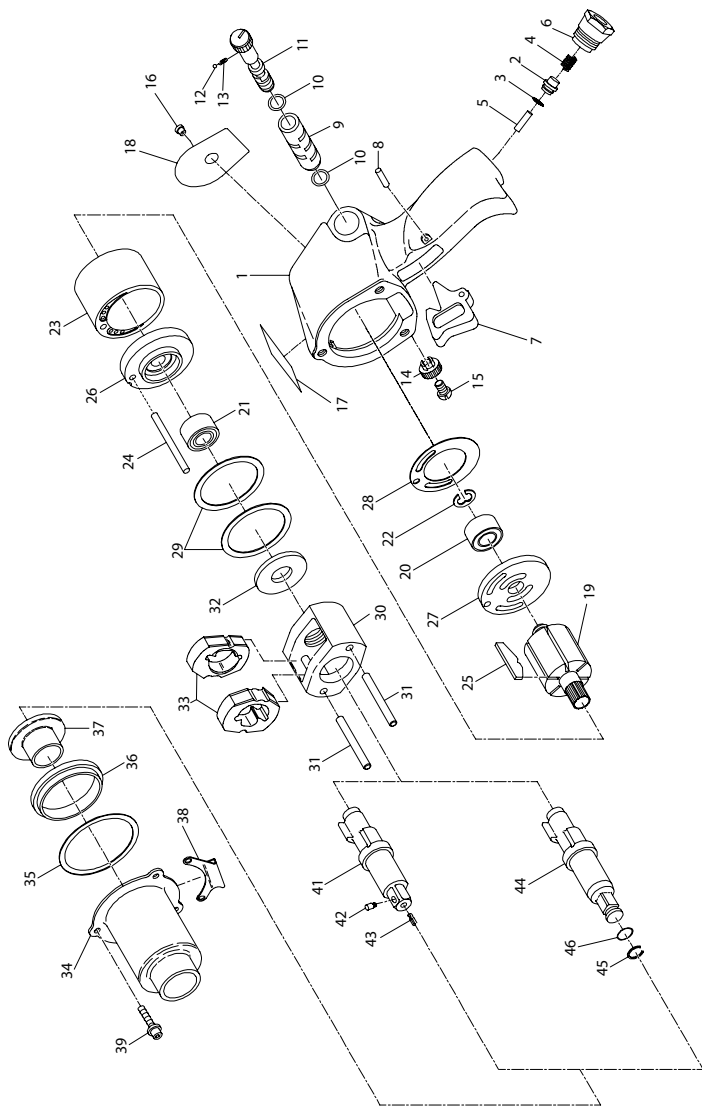


2707P1 Air Impact Wrench Exploded Diagram



(Dwg. TP1943)

2707P1 Air Impact Wrench Parts List

Item	Part Description	Part Number	Item	Part Description	Part Number
1	Motor Housing Assembly	244A-A40	♦28	End Plate Gasket	231-283
2	Throttle Valve Assembly	404-50A	29	Motor Clamp Washer (2)	227-207
♦3	Throttle Valve Face	405-159	♦30	Hammer Frame Assembly	2131-A703
♦4	Throttle Valve Spring	R1A-51	31	Hammer Pin (2)	231-704
5	Throttle Valve Stem	402-302	32	Hammer Frame Rear Washer	231-706
6	Air Strainer Assembly	402-565	♦33	Hammer (2)	2131-724
7	Trigger	705-93	34	Hammer Case Assembly	131-A727-70
8	Trigger Pin	533-656	♦35	Hammer Case Gasket	230-36
9	Reverse Valve Bushing	231-A330	36	Hammer Case Pilot	405-800
♦10	Reverse Valve Bushing Seal	P53-67	37	Hammer Case Bushing	705-941
11	Reverse Valve	231-329A	38	Exhaust Deflector	244LG-23
♦12	Reverse Valve Detent Ball	AV1-255	39	Hammer Case Cap Screw (3)	131-638
♦13	Reverse Valve Detent Spring	231-664	40	Hammer Case Lockwasher	131-637
14	Reverse Valve Knob	231-666	♦41	Anvil Assembly (1/2 Sq. Drive)	231B-726
15	Reverse Valve Knob Screw	231-665		With Pin Type Socket Retainer (Standard)	
16	Grease Fitting	130SR-188	♦42	Socket Retaining Plunger	804-716
17	Housing Label	WARNING-2-99	♦43	Retaining Plunger Spring	5UHD-718
18	Nameplate	2707P1-301	44	Anvil Assembly (1/2 Sq. Drive)	231B-A626
♦19	Rotor	244-53		With Ring Type Socket Retainer	
♦20	Rear Rotor Bearing	402-22		(This item can be ordered separately)	
♦21	Front Rotor Bearing	4U-97	45	Ring Type Socket Retainer	231-425A
♦22	Rear Rotor Bearing Retainer	402-118	46	Retainer O-Ring	RIA-159
♦23	Cylinder	904-3	*	Grease Gun	R000A2-228
24	Cylinder Dowel	230-98	*	Horizontal Hanger	2706-366
♦25	Vane Packet	2906P-42-6		Tune-Up Kit (includes illustrated parts 3, 4, 10 (2),	2707-TK2
♦26	Front End Plate	231-11		12, 13, 20, 21, 22, 25, 28, 35, 42 and 43)	
♦27	Rear End Plate	231-12			

* Not illustrated.

• To keep downtime to a minimum, it is desirable to have on hand certain repair parts. We recommend that you stock one (pair or set) of each part indicated by a bullet (•) for every four tools in service.

♦ Indicates Tune-up Kit part.

Parts and Maintenance

When the life of the tool has expired, it is recommended that the tool be disassembled, degreased and parts be separated by material so that they can be recycled.

Tool repair and maintenance should only be carried out by an authorized Service Center.

Refer all communications to the nearest **Ingersoll Rand** Office or Distributor.

Related Documentation

For additional information refer to:

Air Impact Wrench Product Safety Information Manual 04580916.

Air Impact Wrench Product Information Manual 04578183.

Manuals can be downloaded from www.ingersollrandproducts.com.