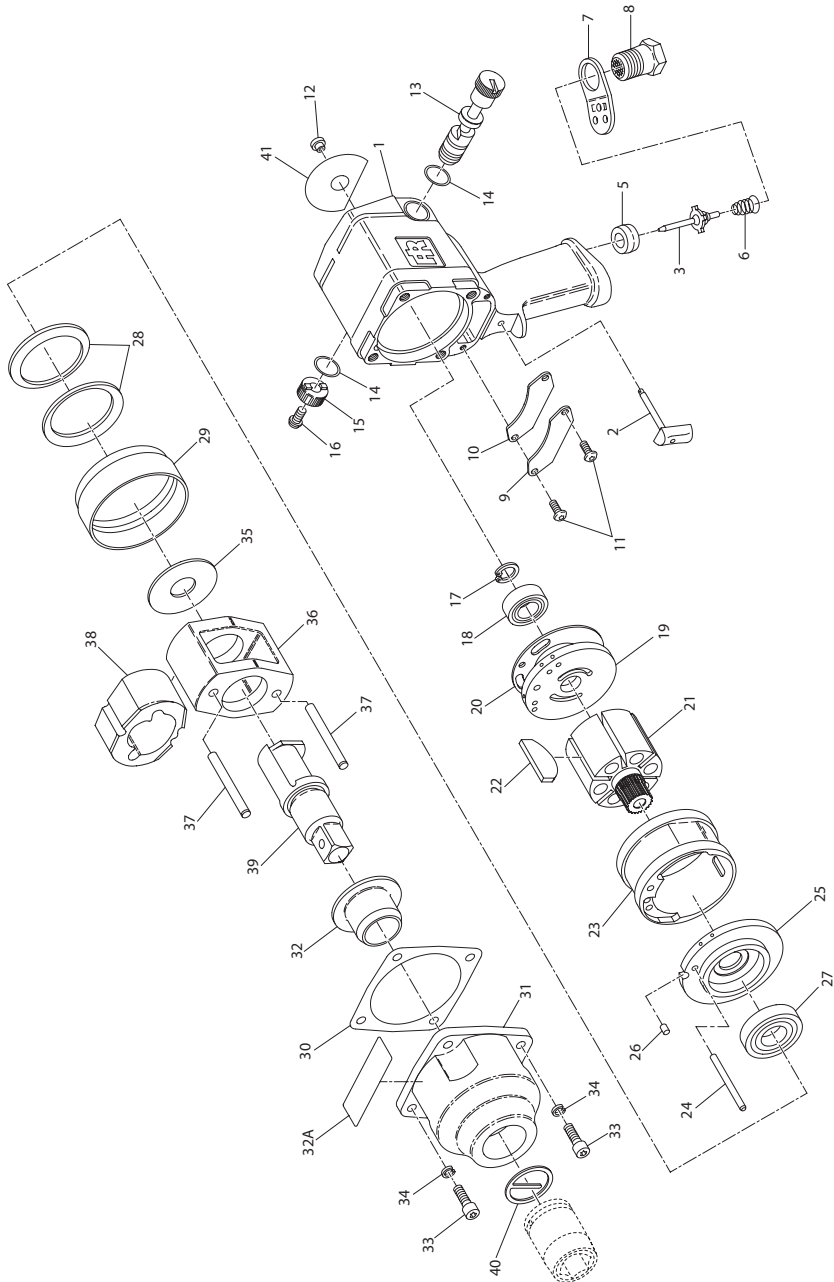


1720P Series Air Impact Wrench - Exploded View



(Dwg. TPA971-2)

1720P Series Air Impact Wrench - Parts List

| Item | Part Description | Part Number | Item | Part Description | Part Number |
|------|------------------------------|-------------|------|---|--------------|
| 1 | Motor Housing Assembly | 1720P-A40 | 26 | End Plate Dowel | 2920-74 |
| 2 | Trigger Assembly | 2920P-A93 | ♦27 | Front Rotor Bearing | 834-24 |
| ♦3 | Throttle Valve | 2921-302 | 28 | Motor Clamp Washer (2) | 2920-207 |
| ♦5 | Throttle Valve Seat | DG230-303 | 29 | Motor Retainer | 2920B-800 |
| ♦6 | Throttle Valve Spring | 1720P-51 | ♦30 | Hammer Case Gasket | 910-36 |
| 7 | Exhaust Deflector | 1720P-23 | 31 | Hammer Case Assembly | 1720B-A727 |
| 8 | Inlet Bushing | 2920P-465 | 32 | Hammer Case Bushing | 2920-641 |
| 9 | Housing Plate | 1720P-230 | 32A | Warning Label | WARNING-2-99 |
| ♦10 | Housing Plate Gasket | 1720P-231 | 33 | Hammer Case Cap Screw (4) | 34U-103 |
| 11 | Housing Plate Screw (2) | FEA100-112 | 34 | Cap Screw Lock Washer (4) | 34U-58 |
| 12 | Grease Fitting | 130SR-188 | 35 | Rear Hammer Frame Washer | 910-706 |
| 13 | Reverse Valve | 1710B-329 | 36 | Hammer Frame Assembly | 2910-A703 |
| ♦14 | Reverse Valve Seal (2) | 261-283 | 37 | Hammer Pin (2) | 2910-704 |
| 15 | Reverse Valve Knob | 231-666 | 38 | Hammer | 260-724 |
| 16 | Reverse Valve Knob Screw | 231-665 | 39 | Anvil | |
| ♦17 | Rear Rotor Bearing Retainer | MVA008-218 | | 3/4" square drive | 260-726 |
| ♦18 | Rear Rotor Bearing | 4E-510 | | 1" square drive | 1711B-826 |
| 19 | Rear End Plate | 2921HP-12 | 40 | Socket Retainer | |
| ♦20 | Rear End Plate Gasket | 2920B-283 | | for 3/4" square drive | RR100345 |
| 21 | Rotor | 2910B-53 | | for 1" square drive | RR100155 |
| ♦22 | Vane Packet (set of 6 Vanes) | 2910-42-6 | 41 | Nameplate | 1720P-301 |
| 23 | Cylinder | 2920-3 | * | Horizontal Hanger | 910-366 |
| 24 | Cylinder Dowel | 910-98 | * | Tune-up Kit (includes illustrated parts 3, 5, | |
| 25 | Front End Plate | 2921HP-11 | * | 6, 10, 14 [2], 17, 18, 20, 22, 27 and 30) | 1720P-TK2 |

* Not Illustrated

♦ Included in Tune-up Kit.

Parts and Maintenance

When the life of the tool has expired, it is recommended that the tool be disassembled, degreased and parts be separated by material so that they can be recycled.

Tool repair and maintenance should only be carried out by an authorized Service Center.

Refer all communications to the nearest **Ingersoll Rand** Office or Distributor.

Related Documentation

For additional information refer to:

Product Safety Information Manual 04580916.

Product Information Manual 03532983.

Maintenance Information Manual 16601619.

Manuals can be downloaded from ingersollrandproducts.com