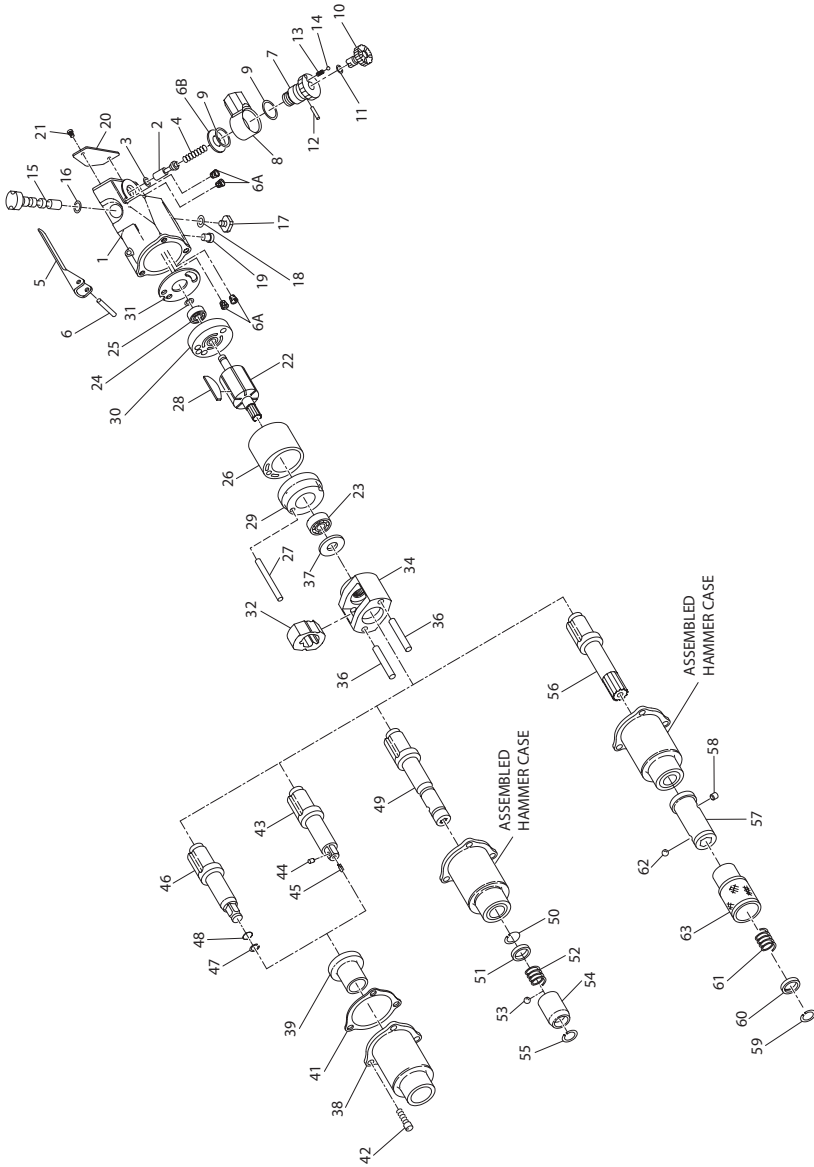


1702SB1 Air Impact Wrench - Exploded View



(Dwg. TPA978-2)

1702SB1 Air Impact Wrench - Parts List

Item	Part Description	Part Number	Item	Part Description	Part Number
1	Motor Housing Assembly	1702SB-A40	39	Hammer Case Bushing	401-641
2	Throttle Valve	R000B2-302	*	Warning Label	WARNING-2-99
† ‡ 3	Throttle Valve Face	401-159	*	.005" Oversize Hammer Case Bushing	401-641-5
‡ 4	Throttle Valve Spring	5081T-151	† ‡ 41	Hammer Case Gasket	2902-36
5	Throttle Lever	201-273	42	Hammer Case Cap Screw (3)	1702-638
6	Throttle Lever Pin	502B-120	43	3/8" Square Drive Anvil Assembly (with pin-type retainer)	1702-P726
‡ 6A	Silencer (4)	1702SB-311			
6B	Inlet Assembly Spacer	R00-35A	‡ 44	Socket Retainer Plunger	5020-716
	Air Inlet Assembly	1702B-A166	‡ 45	Retaining Plunger Spring	401-718
7	Swivel Inlet Body	1702B-165	46	3/8" Square Drive Anvil Assembly (with ring-type retainer)	1702-A626
8	Swivel Inlet Assembly	1702B-B166			
† ‡ 9	Swivel Inlet Seal (2)	R18LF-21	47	Socket Retaining Ring	1702-425
10	Power Regulator Assembly	1702B-A249	48	Retainer Support Ring	1702-426
† ‡ 11	Power Regulator Seal	R00B1-159		Quick-Change Anvil Assembly (1/4" hex)	1702-A926-4
12	Regulator Retainer	201-250	49	Quick-Change Anvil	1702-926-4
‡ 13	Detent Spring	201-251	50	Thrust Ring Lock	5C1-853
‡ 14	Detent Ball	R000B-263	51	Thrust Ring	10A902A2-932-4
15	Reverse Valve Assembly	1702B-A329	52	Retaining Sleeve Spring	2U-931-4
† ‡ 16	Reverse Valve Seal	R0BR1C-283	53	Retaining Ball (5/32" diameter steel)	2U-696
17	Reverse Valve Stop	401-665	54	Retaining Sleeve	2U-930-4
† ‡ 18	Bushing Seal	CE110-210	55	Retaining Sleeve Stop	2U-933-4
19	Grease Fitting	130SR-188		Quick-Change Anvil Assembly (7/16" hex)	1702-A926-7
20	Nameplate	1702SB-301	56	Quick-Change Anvil	1702-926-7
21	Nameplate Screw (3)	BN403-302	57	Anvil Body	10A902A5-925
22	Rotor	401-53	58	Body Lock Pin	10A902A5-936
‡ 23	Front Rotor Bearing	R00H-97	59	Thrust Ring Lock	4U-933-7
† ‡ 24	Rear Rotor Bearing	401-22	60	Thrust Ring	4U-932-7
‡ 25	Rear Rotor Bearing Retainer	MF-18	61	Retaining Sleeve Spring	4U-931-7
26	Cylinder	401-3	62	Retaining Ball (7/32" diameter steel)	2U-722
27	Cylinder Dowel	HH92-74	63	Retaining Sleeve	10A902A5-930
† ‡ 28	Vane Packet (set of 6 Vanes)	401-42A-6	*	Tune-up Kit (includes illustrated parts 3, 4, 6A[4], 9[2], 11, 13, 14, 16, 18, 23, 24, 25, 28, 31, 41, 44 and 45)	1702SB-TK2
29	Front End Plate	201-11			
30	Rear End Plate	201-12			
† ‡ 31	End Plate Gasket	401-739	*	Vertical Hanger	1901-365
† 32	Hammer	1702-724A	*	Horizontal Hanger	1901-366
34	Hammer Frame Assembly	1702-A703A	*	Socket Adapter (3/8" to 1/2")	2U-215
† 36	Hammer Pin (2)	1702-704	*	Quick-Change Chuck	
37	Hammer Frame Washer	1702-706		for 1/4" hex shank accessories	2U-A925-4
38	Hammer Case Assembly	1702-A727		for 7/16" hex shank accessories	502-A925-7

* Not Illustrated.

‡ Indicates Tune-up Kit Part.

† To keep downtime to a minimum, it is desirable to have on hand certain repair parts. We recommend that you stock one (pair or set) of each part indicated by (†) for four tools in service.