





SECTION CONTENTS

CONSTRUCTOR MIG GUNS	102
Tweco® Compatible Mini® Flex Neck	102
Tweco® Compatible Mini® Style	104
TW1/Fab 250	106
Inweld Slim Torch	108
TW2 250A	110
TW3 300A	112
TW4 400A	114
TW5 500A	116
MI Compatible	118
TR Compatible	120
BE Compatible 250A	124
BE Compatible 300A, 400A	125
BE Compatible 500A	126
Innershield® Style	128
POWER PIN GUIDE	130
HEAVY DUTY PARTS	131
TIG TORCHES WELDCRAFT® COMPATIBLE	132
TM9 Series 130A Air Cooled	132
TM17 Series 150A Air Cooled	134
TM18 Series 350A Water Cooled	136
TM20 Series 250A Water Cooled	138
TM25 Series 250A Water Cooled	140
TM26 Series 200A Air Cooled	142
MODULAR TIG TORCHES	144
MASTER ACCESSORY KITS	145
MASTERWELD TUNGSTEN BY INWELD	146
PLASMA CONSUMABLES	148
Hypertherm® Compatible	150
Thermal Dynamics® Compatible	152
Miller® Compatible	154
ESAB® Compatible	156
ACCESSORIES	157
MASTERWELD PARTNER+PLUS PROGRAMS	158

Series**Product Information & Specs****Part Number****150 AMP FLEX NECK**

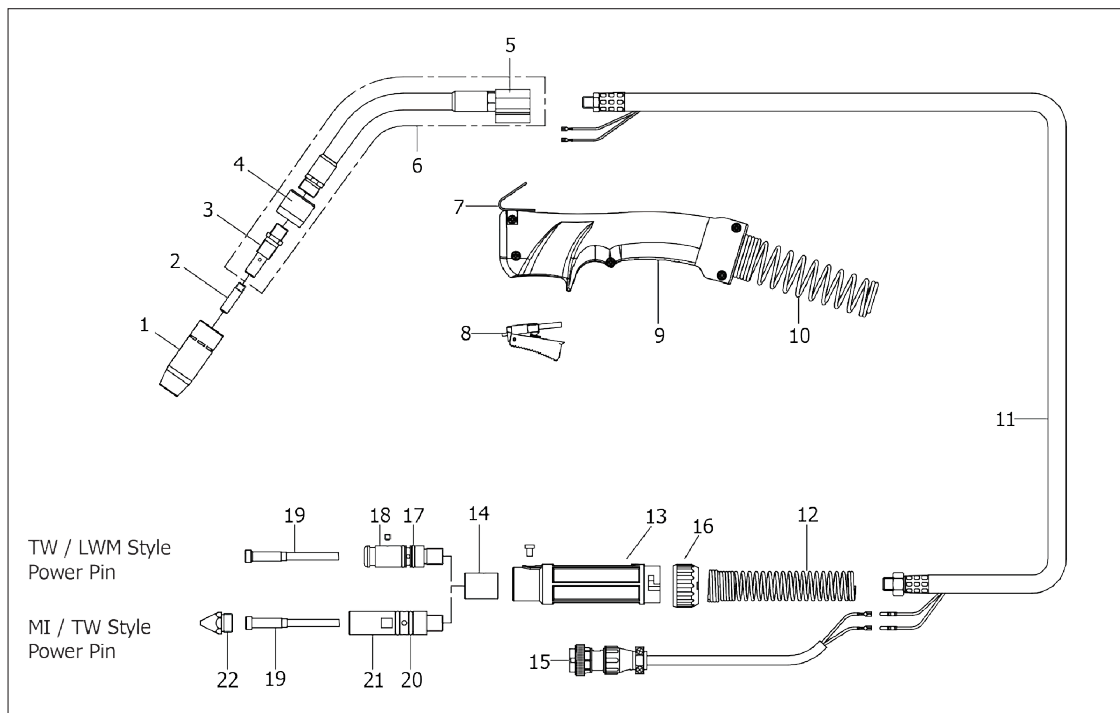
MIG Gun Flex Neck 10' Lincoln	MW	LWM-150FX-10
MIG Gun Flex Neck 10' Miller	MW	M-150FX-10
MIG Gun Flex Neck 12' Lincoln	MW	LWM-150FX-12
MIG Gun Flex Neck 12' Miller	MW	M-150FX-12

**150 AMP FLEX MIG GUN**

Duty Cycle Using	%	Amps
CO ₂	100	150
Mixed Gas	100	95

For all trade name references, please refer to the last page for further information.
Images may vary.

REPLACEMENT GUNS & PARTS SUITABLE FOR TWECO STYLE MIG GUNS



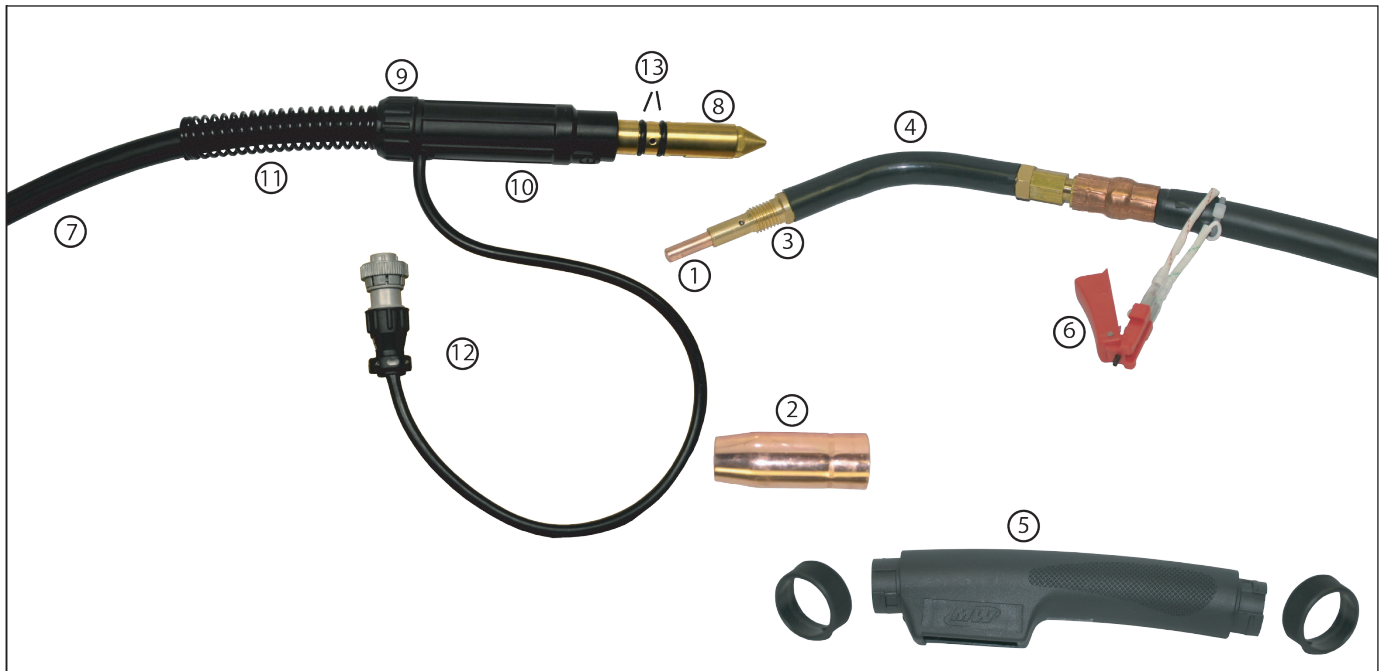
Item	Description	Inches	Millimeters	Part Number	Item	Description	Part Number
1	Nozzle Standard	1/2"	12mm	MW 21-50	9	Handle	MW 8M-Flex
	Nozzle Standard	5/8"	16mm	MW 21-62	10	Front Spring Cable Support	MW 141-6Flex
	Nozzle Flush	1/2"	12mm	MW 21-50F	11	Cable Assembly 3M	MW MPC150
	Nozzle Flush	5/8"	16mm	MW 21-62F	12	Rear Spring	MW 141-4S
2	Contact Tip Standard Duty	0.023"	0.6mm	MW 11-23	13	Rear Housing	MW AS15S
	Contact Tip Standard Duty	0.030"	0.8mm	MW 11-30	14	Machine Adaption End Fitting	MW MAEFS
	Contact Tip Standard Duty	0.035"	0.9mm	MW 11-35	15	MI Style 4 Pin Plug Assy	MW 206429-1
	Contact Tip Standard Duty	0.040"	1.0mm	MW 11-40	16	Adapter Support Nut	MW ASN15S
	Contact Tip Standard Duty	0.045"	1.1mm	MW 11-45	17	O Ring Suit MW M174DC-TW	MW 224
	Contact Tip Heavy Duty	0.030"	0.8mm	MW 11H-30	18	Machine Plug, TW Style	MW M174DC-TW
	Contact Tip Heavy Duty	0.035"	0.9mm	MW 11H-35	20	O Ring Suit MPMTW4	MW ORMDC
	Contact Tip Heavy Duty	0.040"	1.0mm	MW 11H-40	21	Machine Plug, MI/TW Style	MW MPMTW4
	Contact Tip Heavy Duty	0.045"	1.1mm	MW 11H-45	22	Machine Plug Tip, MI Style	MW MPMT-2
	Contact Tip Heavy Duty (Alum)	3/64	1.2mm	MW 11AH-364			
3	Gas Diffuser (Tip Holder)			MW 51			
	Gas Diffuser (Tip Holder)			MW 51-23			
4	Connector Insulator			MW 31-Flex			
5	Connector Block Assy			MW 104-Flex			
6	Flexible Conductor Tube (Gooseneck)			MW 6M-Flex			
7	Hanger Hook	.023"-.040"	0.6-1.0mm	MW 152-Flex			
8	Trigger	.030"-.035"	0.8-0.9mm	MW 9M-Flex			
19	Conduit Assembly (Liner)	.040"-.045"	1.0-1.1mm	MW 35-40-15			
	Conduit Assembly (Liner)	.035"-.045"	0.9-1.1mm	MW 42-3035-15			
	Conduit Assembly (Liner)			MW 42-4045-15			
	Conduit Assembly (Liner) Nylon			MW 42N-4045-15			

Series	Product Information & Specs	Part Number
150 AMP MINI	MIG Gun MINI .030-.035" 10' Lincoln Wirematic	MW LWM-MINI-10
	MIG Gun Tweco® Style 150A Mini Hobart	MW H-MINI-10
	MIG Gun MINI .030-.035" 10' Lincoln	MW L-MINI-10
	MIG Gun MINI .030-.035" 10' Miller	MW M-MINI-10
	MIG Gun MINI .030-.035" 10' Euro	MW X-MINI-10
	MIG Gun MINI .030-.035" 12' Lincoln Wirematic	MW LWM-MINI-12
	MIG Gun Tweco® Style 150A 12' Hobart	MW H-MINI-12
	MIG Gun MINI .030-.035" 12' Lincoln	MW L-MINI-12
	MIG Gun MINI .030-.035" 12' Miller	MW M-MINI-12
	MIG Gun MINI .030-.035" 12' Euro	MW X-MINI-12
	MIG Gun MINI .030-.035" 10' Hard Wire	MW MINI-10-HW
	Gasless Thread Protector suit MINI Guns	MW TP1



150 AMP MIG GUN		
Duty Cycle Using	%	Amps
CO ₂	100	150
Mixed Gas	100	95

For all trade name references, please refer to the last page for further information.
Images may vary.



Item	Description	Inches	Millimeters	Part Number	Item	Description	Part Number
1	Contact Tip Standard Duty	0.023"	0.6mm	MW 11-23	7	Power Cable 180 Amp	MW MPC150
	Contact Tip Standard Duty	0.030"	0.8mm	MW 11-30	8	Miller Power Plug	MW 174M
	Contact Tip Standard Duty	0.035"	0.9mm	MW 11-35	9	Adaptor Support Nut	MW ASN15S
	Contact Tip Standard Duty	0.040"	1.0mm	MW 11-40	10	Adaptor Support	MW AS15S
	Contact Tip Standard Duty	0.045"	1.1mm	MW 11-45	11	Spring Support	MW 141-4S
	Contact Tip Heavy Duty	0.030"	0.8mm	MW 11H-30	12	4-Pin Amphenol Plug	MW 206429-1
	Contact Tip Heavy Duty	0.035"	0.9mm	MW 11H-35	13	O-Ring for Miller Connector	MW ORMDC
	Contact Tip Heavy Duty	0.040"	1.0mm	MW 11H-40		NS Miller™ Cone Nut	MW MPMT-M
	Contact Tip Heavy Duty	0.045"	1.1mm	MW 11H-45			
	Contact Tip Heavy Duty (Alum)	3/64	1.2mm	MW 11AH-364			
2	Nozzle Standard	1/2"	12mm	MW 21-50			
	Nozzle Standard	5/8"	16mm	MW 21-62			
	Nozzle Flush	1/2"	12mm	MW 21-50F			
	Nozzle Flush	5/8"	16mm	MW 21-62F			
	Conduit Assy (Liner) 15'/4.5m	0.023"-0.040"	0.6-1.0mm	MW 35-40-15			
	Conduit Assy (Liner) 15'/4.5m	0.023"-0.035"	0.6-0.9mm	MW 42-3545-15			
	Conduit Assy (Liner) 15'/4.5m	0.035"-0.045"	0.9-1.1mm	MW 42-4045-15			
	Conduit Assy (Liner) Nylon 15'/4.5m	0.035"-0.045"	0.9-1.1mm	MW 42N-4045-15			
3	Gas Diffuser (Tip Holder)	0.023"	0.6mm	MW 51-23			
	Gas Diffuser (Tip Holder)			MW 51			
4	Conductor Tube Assy (Gooseneck)			MW 6M			
5	Handle Assembly			MW 8M			
6	Switch Assembly			MW 9M			

For all trade name references, please refer to the last page for further information. Images may vary.

Series Product Information & Specs Part Number

TW1 CONSTRUCTOR & FAB 250 180 AMP



MIG Gun TW1 .030-.035" 180A 10'	MW	110-3035
MIG Gun TW1 .030-.035" 10' Lincoln	MW	L110-3035
MIG Gun TW1 .030-.035" 10' Lincoln Wirematic	MW	LWM110-3035
MIG Gun TW1 .030-.035" 10' Miller	MW	M110-3035
MIG Gun TW1 .030-.035" 10' Euro	MW	X110-3035
MIG Gun TW1 .030-.035" 10' Hobart	MW	H110-3035
MIG Gun TW1 .030-.035" 180A 12'	MW	112-3035
MIG Gun TW1 .030-.035" 12' Lincoln	MW	L112-3035
MIG Gun TW1 .030-.035" 12' Lincoln Wirematic	MW	LWM112-3035
MIG Gun TW1 .030-.035" 12' Miller	MW	M112-3035
MIG Gun TW1 .030-.035" 12' Euro	MW	X112-3035
MIG Gun TW1 .030-.035" 12' Hobart	MW	H112-3035
MIG Gun TW1 .030-.035" 180A 15'	MW	115-3035
MIG Gun TW1 .030-.035" 15' Lincoln	MW	L115-3035
MIG Gun TW1 .030-.035" 15' Lincoln Wirematic	MW	LWM115-3035
MIG Gun TW1 .030-.035" 15' Miller	MW	M115-3035
MIG Gun TW1 .040-.045" 15' Miller	MW	M115-4045
MIG Gun TW1 .030-.035" 15' Euro	MW	X115-3035
MIG Gun TW1 .030-.035" 15' Hobart	MW	H115-3035
MIG Gun TW1 .030-.035" 180A 20'	MW	120-3035
MIG Gun TW1 .030-.035" 20' Lincoln	MW	L120-3035
MIG Gun TW1 .030-.035" 20' Lincoln Wirematic	MW	LWM120-3035
MIG Gun TW1 .030-.035" 20' Miller	MW	M120-3035
MIG Gun TW1 .040-.045" 20' Miller	MW	M120-4045
MIG Gun TW1 .030-.035" 20' Euro	MW	X120-3035
MIG Gun TW1 .030-.035" 180A 25'	MW	125-3035
MIG Gun TW1 .030-.035" 25' Lincoln	MW	L125-3035
MIG Gun TW1 .030-.035" 25' Lincoln Wirematic	MW	LWM125-3035
MIG Gun TW1 .030-.035" 25' Miller	MW	M125-3035
MIG Gun TW1 .040-.045" 25' Miller	MW	M125-4045
MIG Gun TW1 .030-.035" 25' Euro	MW	X125-3035

**ANY GUN CAN BE MADE WITH
NEARLY ANY POWER PIN UPON
REQUEST. REFER TO THE POWER PIN
GUIDE ON PAGE 130**

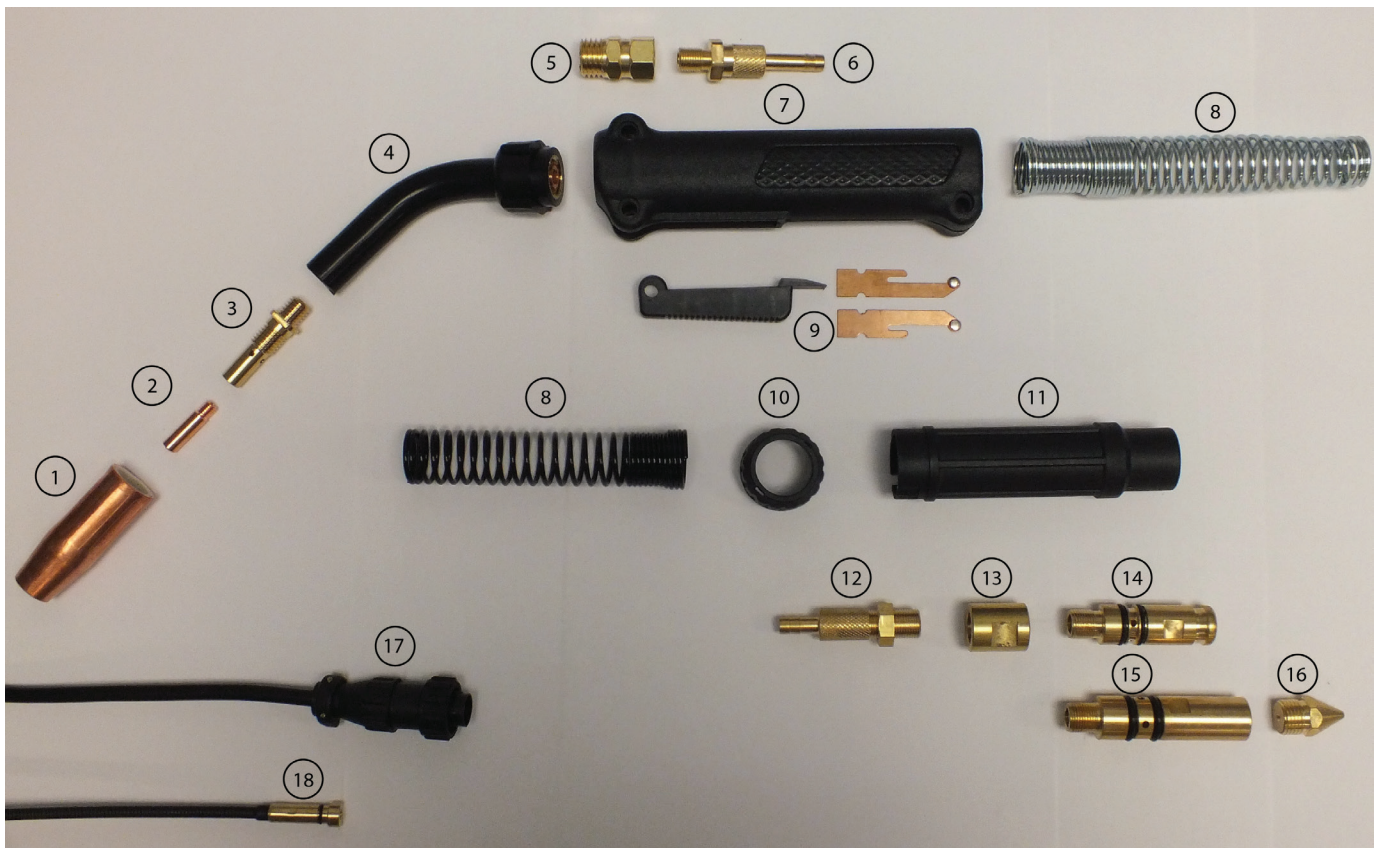


MODEL TW1		
Duty Cycle Using	%	Amps
CO ₂	100	180
Mixed Gas	100	115

MODEL FAB 250		
Duty Cycle Using	%	Amps
CO ₂	100	250
Mixed Gas	100	160

For all trade name references, please refer to the last page for further information.
Images may vary.

REPLACEMENT GUNS & PARTS SUITABLE FOR TWECO STYLE MIG GUNS



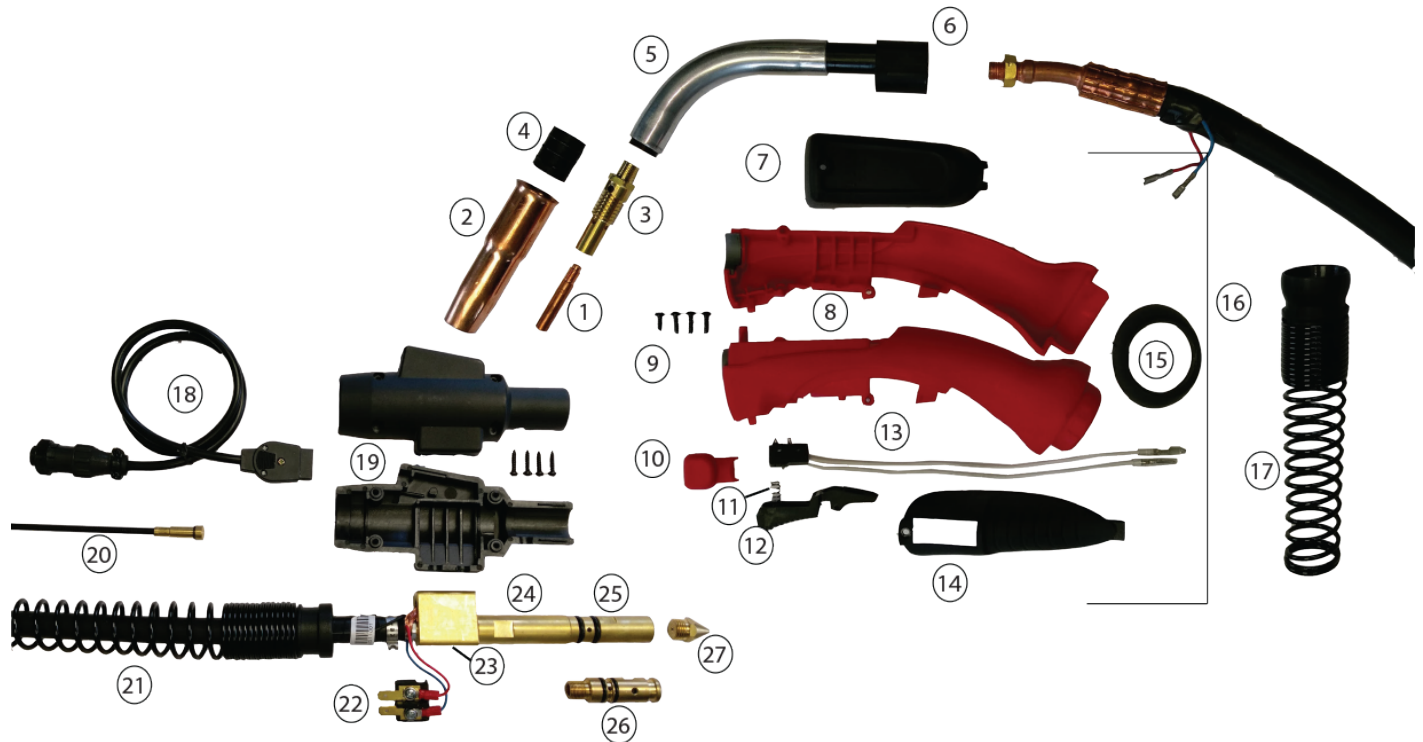
Item	Description	Inches	Millimeters	Part Number	Item	Description	Part Number
1	Nozzle Standard	1/2"	12mm	MW 21-50	5	Power Cable	MW TW1PCC
	Nozzle Standard	5/8"	16mm	MW 21-62		Connection TW1	
	Nozzle Flush	1/2"	12mm	MW 21-50F	6	Cable End 10mm	MW CEBSB-10
	Nozzle Flush	5/8"	16mm	MW 21-62F	7	Handle	MW 81
2	Contact Tip Std Duty	0.023"	0.6mm	MW 11-23		w/Screws TW1	
	Contact Tip Std Duty	0.030"	0.8mm	MW 11-30	8	Cable Support	MW 141-6S
	Contact Tip Std Duty	0.035"	0.9mm	MW 11-35		Spring TW1	
	Contact Tip Std Duty	0.040"	1.0mm	MW 11-40	9	Trigger	MW 91
	Contact Tip Std Duty	0.045"	1.1mm	MW 11-45		w/ Blades TW1	
	Contact Tip HD	0.030"	0.8mm	MW 11H-30	10	Adaptor	MW ASN15S
	Contact Tip HD	0.035"	0.9mm	MW 11H-35		Support Nut	
	Contact Tip HD	0.040"	1.0mm	MW 11H-40	11	Adaptor Support	MW AS15S
	Contact Tip HD	0.045"	1.1mm	MW 11H-45	12	Cable End Small	MW CEBSB
	Contact Tip HD	0.046"	1.2mm	MW 11AH-364	13	Machine Adaption	MW MAEF-S
	(Alum)					End Fitting	
3	Gas Diffuser (Tip Holder)			MW 51-23	14	Machine Plug	MW M174DC-TW
	Gas Diffuser (Tip Holder)			MW 51		-LWM/Tweco	
4	Conductor Tube Assy			MW 61-60	15	Machine Plug	MW MPMTW4
	Insulator-Conductor Tube			MW 71		-Miller	
18	Conduit Assy (Liner) 15'/4.5m	.030"-.035"	0.6-1.0mm	MW 42-3035-15	16	Miller Tip	MW MPMT-2
	Conduit Assy (Liner) 15'/4.5m	.040"-.045"	1.0-1.1mm	MW 42-4045-15	17	Electrical Plug	MW 206429-1
	Conduit Assy (Liner)	.040"-.045"	1.0-1.1mm	MW 42N-4045-15		-Miller	
	Nylon 15'/4.5m						
	Conduit Assy (Liner) 15'/4.5m	0.023"	0.6mm	MW 42-23-15			
	MI Style Conduit						
	(Liner) 15'/4.5m	.030"-.035"	0.6-1.0mm	MW 194-011			

TW STYLE SLIM GUN	Slim MIG Gun Tweco® Style .030-.035" 15' Lincoln	MW	SL215-3035
	MIG Gun 0.040-0.045" 15' Lincoln	MW	SL215-4045
	MIG Gun 0.030-0.035" 15' Lincoln Wirematic	MW	SLWM215-3035
	MIG Gun 0.040-0.045" 15' Lincoln Wirematic	MW	SLWM215-4045
	MIG Gun 0.030-0.035" 15' Lincoln Wirematic w/ Bell Housing	MW	SLP215-3035
	MIG Gun 0.040-0.045" 15' Lincoln Wirematic w/ Bell Housing	MW	SLP215-4045
	MIG Gun 0.030-0.035" 15' Miller	MW	SM215-3035
	MIG Gun 0.040-0.045" 15' Miller	MW	SM215-4045
	MIG Gun 0.030-0.035" 15' Euro	MW	SX215-3035
	MIG Gun 0.040-0.045" 15' Euro	MW	SX215-4045



TW Style Slim Gun		
Duty Cycle Using	%	Amps
CO ₂	100	250
Mixed Gas	100	

REPLACEMENT GUNS & PARTS SUITABLE FOR TWECO STYLE MIG GUNS



Item	Description	Inches	Millimeters	Part Number	Item	Description	Part Number
1	Contact Tip Std Duty	0.035"	0.9mm	MW 14-35	18	Plug & Lead - Miller & Tweco	MW MSAK354
	Contact Tip Std Duty	0.045"	1.1mm	MW 14-45	19	Gun Plug Housing w/ Screws	MW R185-HS
	Contact Tip HD	0.035"	0.9mm	MW 14H-35	21	Rear Spring Cable Support	MW R185-S
	Contact Tip HD	0.045"	1.1mm	MW 14H-45	22	Tab Block	MW 194
2	Nozzle Slip On	1/2"	12mm	MW 22-50	23	Connector Block	MW 102
	Nozzle Slip On	5/8"	16mm	MW 22-62	24	Connector Plug	MW R172-UB
3	Gas Diffuser (Tip Holder)			MW 52	25	Machine Plug - Miller	MW MPMTW4
4	Insulator			MW 32	26	Machine Plug Tip - Miller	MW MPMT
5	Conductor Tube/Gooseneck			MW 62A-60J	27	Machine Plug - Tweco	MW M174DC-TW
6	Plastic Body - Slim Torch			MW PBS			
7	Blind Cap for 82S			MW 82TCS			
8	Red Handle - Slim Torch			MW 82S			
9	Tapping Screw for 82S			MW MHS-S			
10	Flat Suspension Hook for 82S			MW 82SH			
11	Spring for 92S			MW 92SS			
12	Trigger - Slim Torch			MW 92S			
13	Micro Switch for 92S			MW 92SW			
14	Bottom Cup for 82S			MW 82BCS			
15	Locking Nut for 82S Handle			MW 82SN			
16	Handle & Screw Package - Slim Torch			MW 82SWS			
17	Front Cable Spring - Slim Torch			MW 142SBJ			
20	Conduit Assy (Liner) 15'/4.5m	.030"-.035"	0.6-1.0mm	MW 42-3035-15			
	Conduit Assy (Liner) 15'/4.5m	.040"-.045"	1.0-1.1mm	MW 42-4045-15			

Series	Product Information & Specs	Part Number
TW2 CONSTRUCTOR 250A	MIG Gun TW2 .030-.035" 250A 10'	MW 210-3035
	MIG Gun TW2 .030-.035" 10' Lincoln	MW L210-3035
	MIG Gun TW2 .030-.035" 10' Lincoln Wirematic	MW LWM210-3035
	MIG Gun TW2 .030-.035" 10' Miller	MW M210-3035
	MIG Gun TW2 .030-.035" 10' Euro	MW X210-3035
	MIG Gun TW2 .030-.035" 250A 12'	MW 212-3035
	MIG Gun TW2 .030-.035" 12' Lincoln	MW L212-3035
	MIG Gun TW2 .030-.035" 12' Lincoln Wirematic	MW LWM212-3035
	MIG Gun TW2 .040-.045" 12' Lincoln Wirematic	MW LWM212-4045
	MIG Gun TW2 .030-.035" 12' Miller	MW M212-3035
	MIG Gun TW2 .040-.045" 12' Miller	MW M212-4045
	MIG Gun TW2 .030-.035" 12' Euro	MW X212-3035
	MIG Gun TW2 .040-.045" 12' Euro	MW X212-4045
	MIG Gun TW2 .030-.035" 250A 15'	MW 215-3035
	MIG Gun TW2 .030-.035" 15' Lincoln	MW L215-3035
	MIG Gun TW2 .040-.045" 15' Lincoln	MW L215-4045
	MIG Gun TW2 .030-.035" 15' Lincoln Wirematic	MW LWM215-3035
	MIG Gun TW2 .040-.045" 15' Lincoln Wirematic	MW LWM215-4045
	MIG Gun TW2 .030-.035" 15' Miller	MW M215-3035
	MIG Gun TW2 .040-.045" 15' Miller	MW M215-4045
	MIG Gun TW2 .030-.035" 15' Euro	MW X215-3035
	MIG Gun TW2 .040-.045" 15' Euro	MW X215-4045
	MIG Gun TW2 .040-.045" 250A 20'	MW 220-4045
	MIG Gun TW2 .040-.045" 20' Lincoln	MW L220-4045
	MIG Gun TW2 .040-.045" 20' Lincoln Wirematic	MW LWM220-4045
	MIG Gun TW2 .040-.045" 20' Miller	MW M220-4045
	MIG Gun TW2 .040-.045" 20' Euro	MW X220-4045
	MIG Gun TW2 .040-.045" 250A 25'	MW 225-4045
	MIG Gun TW2 .040-.045" 25' Lincoln	MW L225-4045
	MIG Gun TW2 .040-.045" 25' Lincoln Wirematic	MW LWM225-4045
	MIG Gun TW2 .040-.045" 25' Miller	MW M225-4045
	MIG Gun TW2 .040-.045" 25' Euro	MW X225-4045



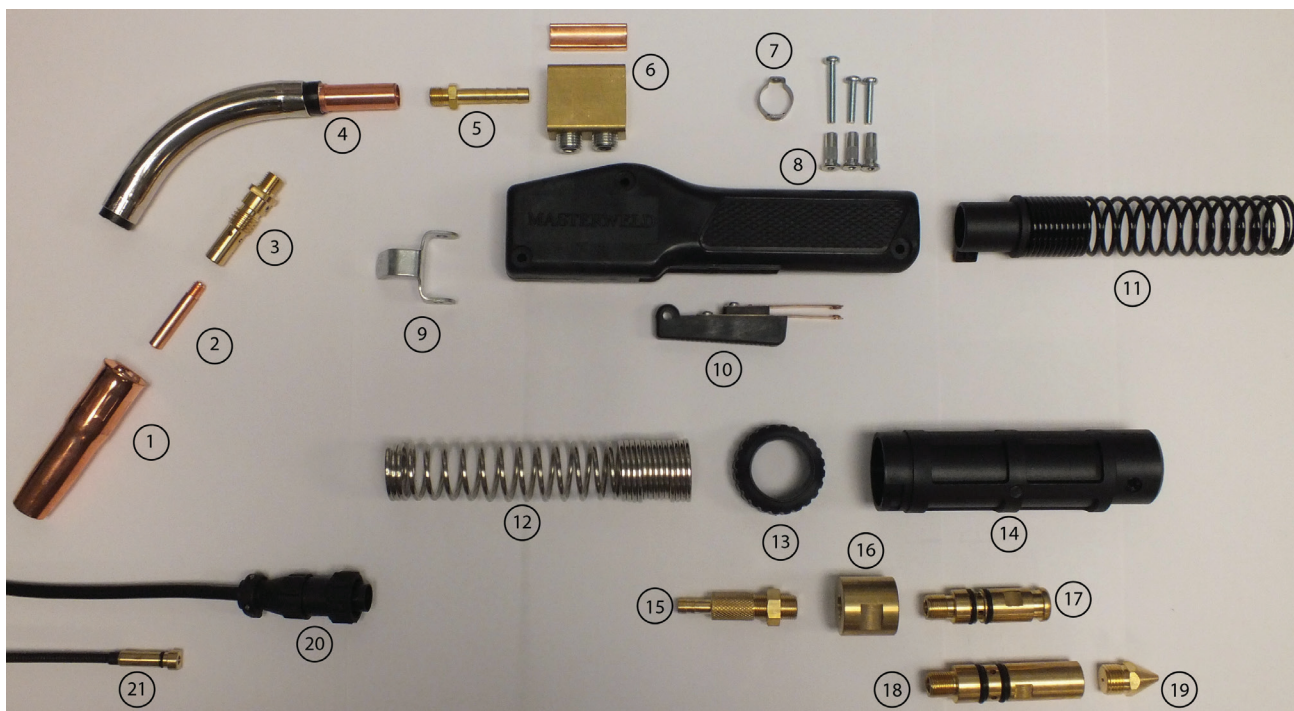
**ANY GUN CAN BE MADE WITH
NEARLY ANY POWER PIN UPON
REQUEST. REFER TO THE POWER PIN
GUIDE ON PAGE 130**



MODEL TW2		
Duty Cycle Using	%	Amps
CO ₂	100	250
Mixed Gas	100	200

For all trade name references, please refer to the last page for further information.
Images may vary.

REPLACEMENT GUNS & PARTS SUITABLE FOR TWECO STYLE MIG GUNS

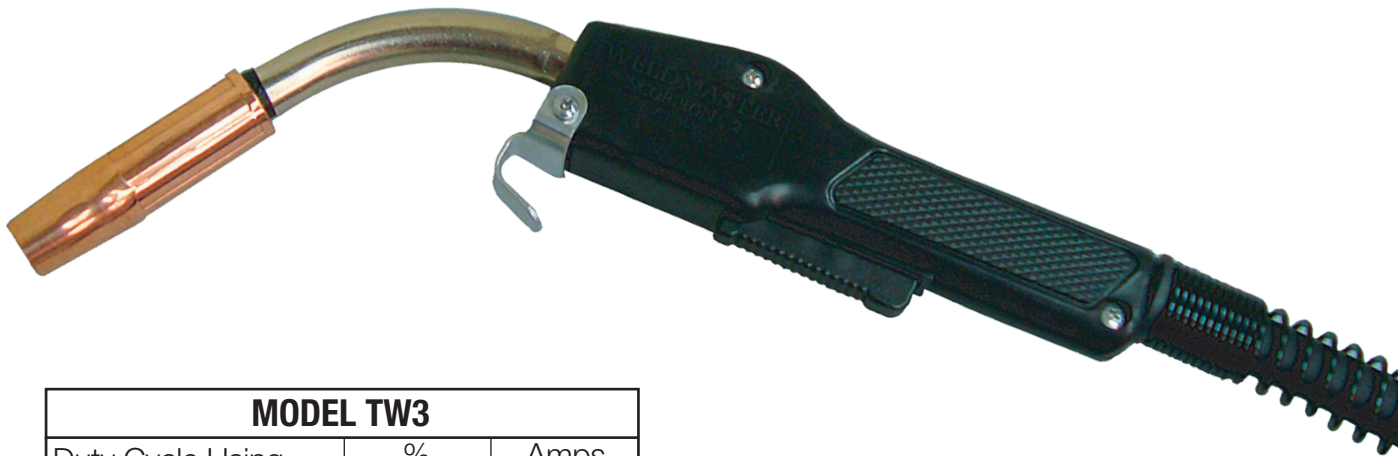


Item	Description	Inches	Millimeters	Part Number	Item	Description	Part Number
1	Nozzle Slip On	1/2"	12mm	MW 22-50	5	Neoprene Insulator	MW 62N
	Nozzle Slip On	5/8"	16mm	MW 22-62		62A for TW2	
	Nozzle Fixed	1/2"	12mm	MW 22-50F	6	Connector Block	MW 102
	Nozzle Fixed	5/8"	16mm	MW 22-62F		Assembly TW2	
	Nozzle HD Fixed Course Thread	1/2"	12mm	MW 24CT-50S	7	Oetiker Clamp	MW OC157
	Nozzle HD Fixed Course Thread	5/8"	16mm	MW 24CT-62S		13.8-15.7 mm	
	Nozzle HD Fixed Course Thread	3/4"	19mm	MW 24CT-75S	8	Handle Suit	MW 82WS
	Nozzle Aluminum Tapered Slip On	3/8"	10mm	MW 22AT-37SS		w/screws TW2	
2	Contact Tip Standard Duty	0.023"	0.6mm	MW 14-23	9	Hanger	MW 152
	Contact Tip Standard Duty	0.030"	0.8mm	MW 14-30	10	Trigger and Blades	MW 92
	Contact Tip Standard Duty	0.035"	0.9mm	MW 14-35		Suit TW2	
	Contact Tip Standard Duty	0.040"	1.0mm	MW 14-40	11	Spring Support	MW 142-6ADS
	Contact Tip Standard Duty	0.045"	1.1mm	MW 14-45		Unit - Handle	
	Contact Tip Standard Duty	3/64"	1.2mm	MW 14AH-364	12	Cable Support	MW 144-6S
	Contact Tip Heavy Duty	0.035"	0.9mm	MW 14H-35		Spring 4,5	
	Contact Tip Heavy Duty	0.040"	1.0mm	MW 14H-40	13	Adaptor Support	MW ASN15
	Contact Tip Heavy Duty	0.045"	1.1mm	MW 14H-45		Nut	
	Contact Tip Tapered	0.030"	0.8mm	MW 14T-30	14	Adaptor Support	MW AS15
	Contact Tip Tapered	0.035"	0.9mm	MW 14T-35	15	Cable End	MW CEBSB
	Contact Tip Tapered	0.040"	1.0mm	MW 14T-40		-Small Barb	
	Contact Tip Tapered	0.045"	1.1mm	MW 14T-45	16	Machine Adaption	MW MAEF
3	Insulator			MW 52		End Fitting	
	Insulator H.D. Course Thread			MW 34CT	17	Machine Plug	MW M174DC-TW
4	Conductor Tube Assy 45°			MW 62A-45J		-LWM/Tweco	
	Conductor Tube Assy 60°			MW 62A-60J	18	Machine Plug	MW MPMTW4
	Conductor Tube Assy 80°			MW 62A-80J		-Miller	
	Conductor Tube Straight			MW 62A-180J	19	Machine Plug Cap	MW MPMT-2
	Conduit Assy (Liner) 15'/4.5 m	0.023"	0.6mm	MW 42-23-15		-Miller	
21	Conduit Assy (Liner) 15'/4.5 m	0.030"-0.035"	0.8mm-0.9mm	MW 42-3035-15	20	Electrical Plug	MW 206429-1
	Conduit Assy (Liner) 25'/7.6 m	0.030"-0.035"	0.8mm-0.9mm	MW 42-3035-25		-Miller	
	Conduit Assy (Liner) 15'/4.5 m	0.035"-0.045"	0.9mm-1.1mm	MW 42-4045-15			
	Conduit Assy (Liner) 25'/7.6 m	0.035"-0.045"	0.9mm-1.1mm	MW 42-4045-25			

Series	Product Information & Specs	Part Number
TW3 CONSTRUCTOR 300A	MIG Gun TW3 .035-.045" 300A 10'	MW 310-3545
	MIG Gun TW3 .035-.045" 10' Lincoln	MW L310-3545
	MIG Gun TW3 .035-.045" 10' Lincoln Wirematic	MW LWM310-3545
	MIG Gun TW3 .035-.045" 10' Miller	MW M310-3545
	MIG Gun TW3 .035-.045" 10' Euro	MW X310-3545
	MIG Gun TW3 .035-.045" 300A 12'	MW 312-3545
	MIG Gun TW3 .035-.045" 12' Lincoln	MW L312-3545
	MIG Gun TW3 .035-.045" 12' Lincoln Wirematic	MW LWM312-3545
	MIG Gun TW3 .035-.045" 12' Miller	MW M312-3545
	MIG Gun TW3 .035-.045" 12' Euro	MW X312-3545
	MIG Gun TW3 .035-.045" 300A 15'	MW 315-3545
	MIG Gun TW3 .035-.045" 15' Lincoln	MW L315-3545
	MIG Gun TW3 .035-.045" 15' Lincoln Wirematic	MW LWM315-3545
	MIG Gun TW3 .035-.045" 15' Miller	MW M315-3545
	MIG Gun TW3 .035-.045" 15' Euro	MW X315-3545
	MIG Gun TW3 .035-.045" 300A 20'	MW 320-3545
	MIG Gun TW3 .035-.045" 20' Lincoln	MW L320-3545
	MIG Gun TW3 .035-.045" 20' Lincoln Wirematic	MW LWM320-3545
	MIG Gun TW3 .035-.045" 20' Miller	MW M320-3545
	MIG Gun TW3 .035-.045" 20' Euro	MW X320-3545
	MIG Gun TW3 .035-.045" 300A 25'	MW 325-3545
	MIG Gun TW3 .035-.045" 25' Lincoln	MW L325-3545
	MIG Gun TW3 .035-.045" 25' Lincoln Wirematic	MW LWM325-3545
	MIG Gun TW3 .035-.045" 25' Miller	MW M325-3545
	MIG Gun TW3 .035-.045" 25' Euro	MW X325-3545



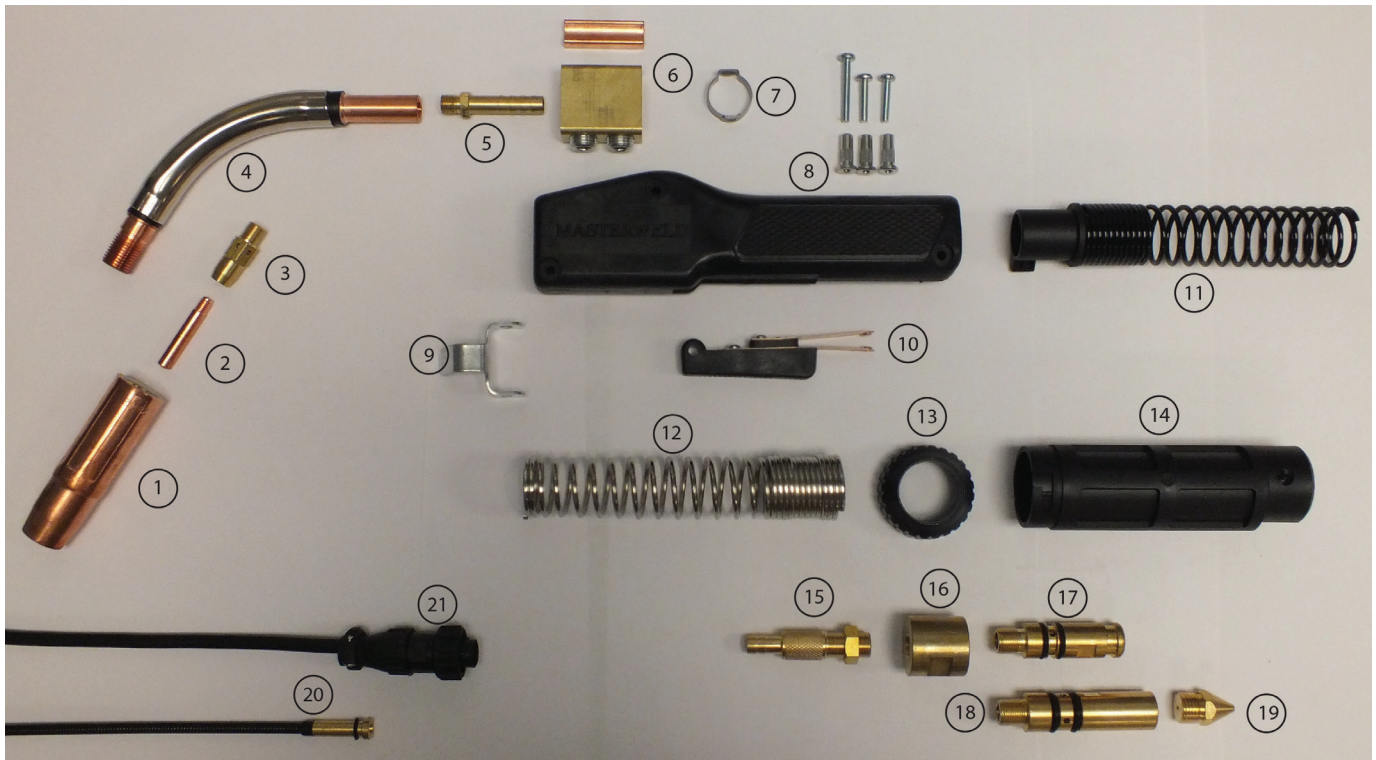
**ANY GUN CAN BE MADE WITH
NEARLY ANY POWER PIN UPON
REQUEST. REFER TO THE POWER PIN
GUIDE ON PAGE 130**



MODEL TW3		
Duty Cycle Using	%	Amps
CO ₂	100	300
Mixed Gas	100	250

For all trade name references, please refer to the last page for further information.
Images may vary.

REPLACEMENT GUNS & PARTS SUITABLE FOR TWECO STYLE MIG GUNS



Item	Description	Inches	Millimeters	Part Number	Item	Description	Part Number
1	Nozzle Fixed	1/2"	12mm	MW 23-50	5	Nipple	MW 64N
	Nozzle Fixed	5/8"	16mm	MW 23-62	6	Connector Block Assy	MW 102
	Nozzle Slip On	1/2"	12mm	MW 24A-50	7	Oetiker Clamp 17-19.8mm	MW OC198
	Nozzle Slip On	5/8"	16mm	MW 24A-62	8	Handle Assy w/ Screws	MW 82WS
	Nozzle HD Fixed Course Thread	1/2"	12mm	MW 24CT-50S	9	Hanger	MW 152
	Nozzle HD Fixed Course Thread	5/8"	16mm	MW 24CT-62S	10	Trigger Switch Assy	MW 92
	Nozzle HD Fixed Course Thread	3/4"	20mm	MW 24CT-75S	11	Cable Support -Handle End	MW 142-6ADS
	Contact Tip Std Duty	.023"	0.6mm	MW 14-23	12	Cable Support Spring	MW 144-6S
	Contact Tip Std Duty	.030"	0.8mm	MW 14-30	13	Adaptor Support Nut	MW ASN15
	Contact Tip Std Duty	.035"	0.9mm	MW 14-35	14	Adaptor Support (Euro/Direct)	MW AS15
	Contact Tip Std Duty	.040"	1.0mm	MW 14-40	15	Cable End - Large Barb	MW CEBLB
	Contact Tip Std Duty	.045"	1.1mm	MW 14-45	16	Machine Adaption End Fitting	MW MAEF
2	Contact Tip HD	.035"	0.9mm	MW 14H-35	17	Machine Plug -LWM/Tweco	MW M174DC-TW
	Contact Tip HD	.040"	1.0mm	MW 14H-40	18	Machine Plug - Miller	MW MPMTW4
	Contact Tip HD	.045"	1.1mm	MW 14H-45	19	Machine Plug Cap -Miller	MW MPMT-2
	Contact Tip HD (Alum)	3/64"	1.2mm	MW 14AH-364	21	Electrical Plug - Miller	MW 206429-1
	Contact Tip Tapered	.030"	0.8mm	MW 14T-30			
	Contact Tip Tapered	.035"	0.9mm	MW 14T-35			
	Contact Tip Tapered	.040"	1.0mm	MW 14T-40			
	Contact Tip Tapered	.045"	1.1mm	MW 14T-45			
3	Gas Diffuser			MW 54A			
N/L	Insulator			MW 34A			
	Insulator HD Course Thread			MW 34CT			
4	Conductor Tube Assy 45°			MW 63-45J			
	Conductor Tube Assy 60° Std			MW 63-60J			
20	Conduit Assy (Liner) 15'	.035"-.045"	0.6-0.9mm	MW 44-3545-15			
	Conduit Assy (Liner) 15'	.035"-.045"	0.6-0.9mm	MW 44-3545-25			
	Conduit Assy (Liner) 15'	.045"-1/16"	0.9-1.1mm	MW 44-116-15			
	Conduit Assy (Liner) 15'	.045"-1/16"	0.9-1.1mm	MW 44-116-25			
	Conduit Assy (Liner) Nylon -15'/4.5m	.035"-.045"	0.6mm	MW 44N-3545-15			

Series	Product Information & Specs	Part Number
TW4 CONSTRUCTOR 400A	MIG Gun TW4 .035-.045" 400A 10'	MW 410-3545
	MIG Gun TW4 .035-.045" 10' Lincoln	MW L410-3545
	MIG Gun TW4 .035-.045" 10' Lincoln Wirematic	MW LWM410-3545
	MIG Gun TW4 .035-.045" 10' Miller	MW M410-3545
	MIG Gun TW4 .035-.045" 10' Euro	MW X410-3545
	MIG Gun TW4 .035-.045" 400A 12'	MW 412-3545
	MIG Gun TW4 .035-.045" 12' Lincoln	MW L412-3545
	MIG Gun TW4 .035-.045" 12' Lincoln Wirematic	MW LWM412-3545
	MIG Gun TW4 .035-.045" 12' Miller	MW LWM412-4545
	MIG Gun TW4 .035-.045" 12' Euro	MW M412-3545
	MIG Gun TW4 .035-.045" 400A 15'	MW 415-3545
	MIG Gun TW4 1/16" 15'	MW 415-116
	MIG Gun TW4 .035-.045" 15' Lincoln	MW L415-3545
	MIG Gun TW4 1/16" 15' Lincoln	MW L415-116
	MIG Gun TW4 .035-.045" 15' Lincoln Wirematic	MW LWM415-3545
	MIG Gun TW4 1/16" 15' Lincoln Wirematic	MW LWM415-116
	MIG Gun TW4 .030-.045" 15' Miller	MW M415-3545
	MIG Gun TW4 1/16" 15' Miller	MW M415-116
	MIG Gun TW4 .035-.045" 15' Euro	MW X415-3545
	MIG Gun TW4 1/16" 400A 20'	MW M420-1116
	MIG Gun TW4 1/16" 20' Lincoln	MW L420-116
	MIG Gun TW4 1/16" 20' Lincoln Wirematic	MW LWM420-116
	MIG Gun TW4 .035-.045" 20' Miller	MW M420-3545
	MIG Gun TW4 1/16" 20' Miller	MW M420-116
	MIG Gun TW4 1/16" 20' Euro	MW X420-116
	MIG Gun TW4 .035-.045" 400A 25'	MW 420-3545
	MIG Gun TW4 1/16" 25' Lincoln	MW L425-116
	MIG Gun TW4 1/16" 25' Lincoln Wirematic	MW LWM425-116
	MIG Gun TW4 1/16" 25' Miller	MW M425-116
	MIG Gun TW4 1/16" 25' Euro	MW X425-116



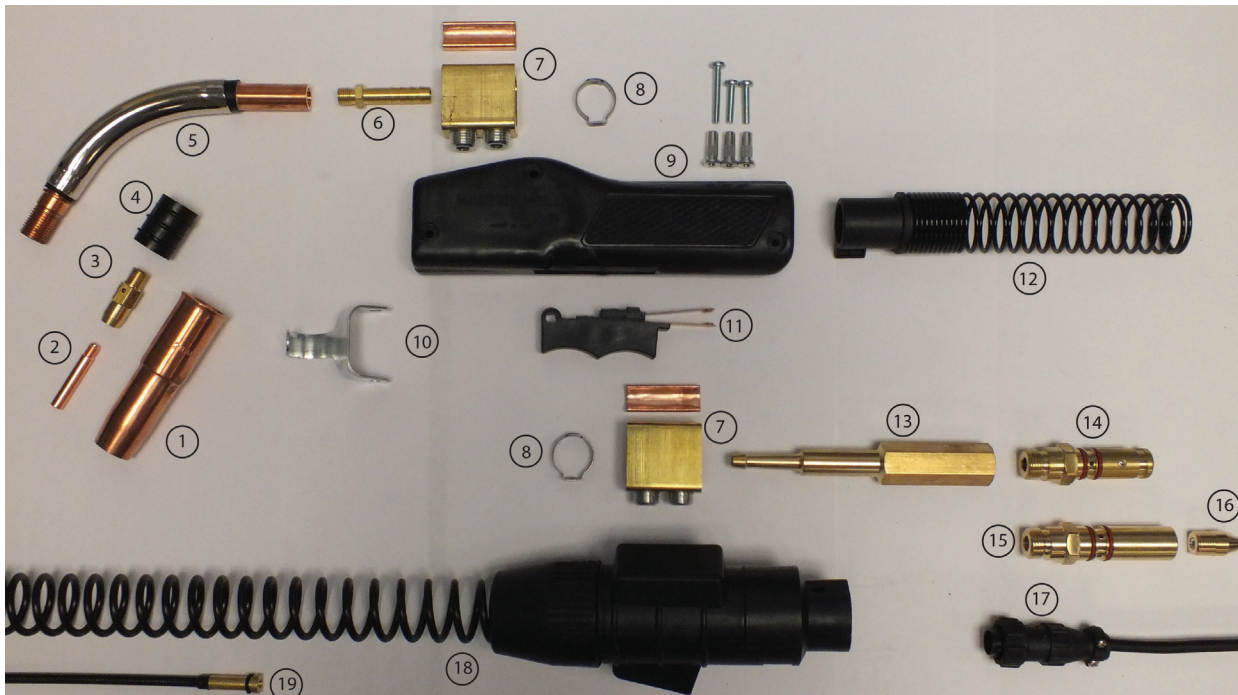
**ANY GUN CAN BE MADE WITH
NEARLY ANY POWER PIN UPON
REQUEST. REFER TO THE POWER PIN
GUIDE ON PAGE 130**



MODEL TW4		
Duty Cycle Using	%	Amps
CO ₂	100	400
Mixed Gas	100	325

For all trade name references, please refer to the last page for further information.
Images may vary.

REPLACEMENT GUNS & PARTS SUITABLE FOR TWECO STYLE MIG GUNS

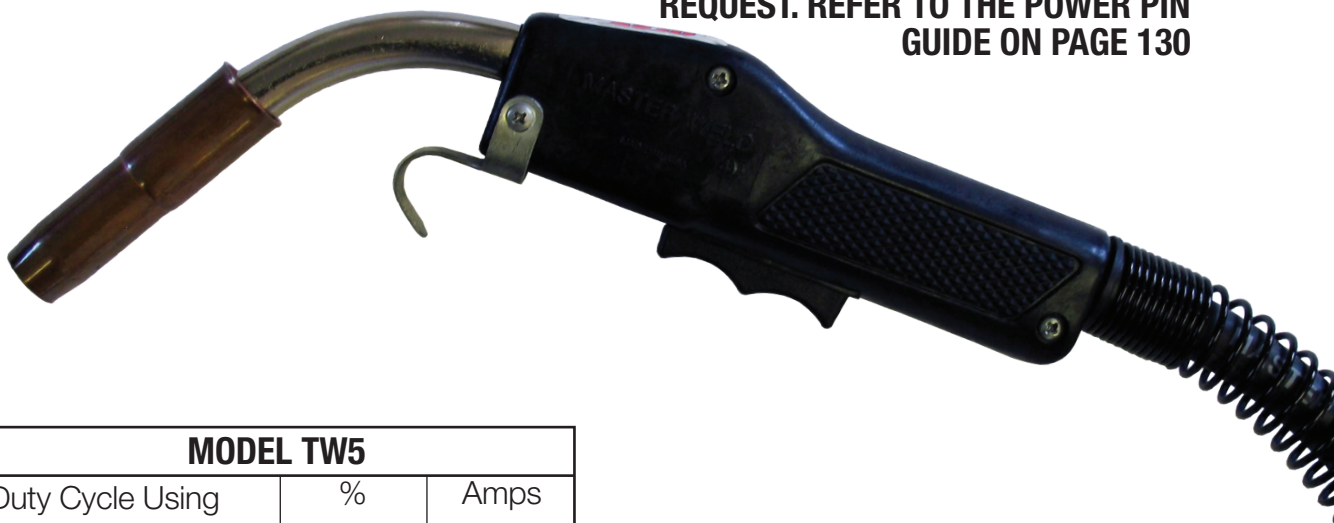


Item	Description	Inches	Millimeters	Part Number	Item	Description	Inches	Millimeters	Part Number
1	Nozzle Slip On	1/2"	12mm	MW 24A-50	3	Gas Diffuser			MW 54A
	Nozzle Slip On	5/8"	16mm	MW 24A-62	4	Insulator Standard Duty			MW 34A
	Nozzle Slip On	3/4"	19mm	MW 24A-75		Insulator Heavy Duty			MW 34CT
	Nozzle HD Slip On Alum.	1/2"	12mm	MW 24AH-50	5	Conductor Tube 45°			MW 64A-45J
	Nozzle HD Slip On Alum.	5/8"	16mm	MW 24AH-62		Conductor Tube 60°			MW 64A-60J
	Nozzle HD Slip On Alum.	3/4"	19mm	MW 24AH-75		Conductor Tube 80°			MW 64A-80J
	Nozzle Std Tapered Slip On Alum.	3/8"	10mm	MW 24AT-37SS		Conductor Tube Straight			MW 64A-180J
	Nozzle Screw On	1/2"	12mm	MW 23-50	6	Nipple			MW 64N
	Nozzle Screw On	5/8"	16mm	MW 23-62	7	Connector Block			MW 104
	Nozzle Screw On	3/4"	19mm	MW 23-75	8	Clamp Oetiker 17.0-19.8mm			MW OC198
	Nozzle Course Thread	1/2"	12mm	MW 24CT-50S	9	Handle Assembly			MW 84AWS
	Nozzle Course Thread	5/8"	16mm	MW 24CT-62S	10	Gun Hanger			MW 154
	Nozzle Course Thread	3/4"	19mm	MW 24CT-75S	11	Trigger Switch Assembly			MW 94R
	Nozzle Course Thread (Recessed Tip)	1/2"	12mm	MW 24CT-50R	12	Cable Support			MW 144-6ADS
2	Nozzle Course Thread (Recessed Tip)	5/8"	16mm	MW 24CT-62R	13	Universal Machine End Fitting			MW R174-UA
	Nozzle Course Thread (Recessed Tip)	3/4"	19mm	MW 24CT-75R	14	Connection for LWM/TW Style			MW R174-T
	Contact Tip Std Duty	0.023"	0.6mm	MW 14-23	15	Connection for MI Style			MW R174-M
	Contact Tip Std Duty	0.030"	0.8mm	MW 14-30	16	Machine Plug Cap - Miller			MW R174MN
	Contact Tip Std Duty	0.035"	0.9mm	MW 14-35	17	Electrical Plug - Miller			MW 206429-1
	Contact Tip Std Duty	0.040"	1.0mm	MW 14-40	18	Universal Spring/Support			MW R185-H
	Contact Tip Std Duty	0.045"	1.1mm	MW 14-45		Conduit Assy (Liner) 15'/4.5m	.035"-.045"	0.6-0.9mm	MW 44-3545-15
	Contact Tip Std Duty	0.052"	1.3mm	MW 14-52		Conduit Assy (Liner) 15'/4.5m	.045"-1/16"	0.9-1.6mm	MW 44-116-15
	Contact Tip Std Duty	1/16"	1.6mm	MW 14-116		Conduit Assy (Liner) 15'/4.5m	.045"-5/64"	0.9-2.0mm	MW 44-564-15
	Contact Tip Std Duty	5/64"	2.0mm	MW 14-564		Conduit Assy (Liner) 15'/4.5m	.035"-.045"	0.6-0.9mm	MW 44-3545-25
	Contact Tip HD	0.035"	0.9mm	MW 14H-35		Conduit Assy (Liner) 15'/4.5m	.045"-1/16"	0.9-1.6mm	MW 44-116-25
	Contact Tip HD	0.040"	1.0mm	MW 14H-40		Conduit Assy (Liner) 15'/4.5m	.045"-5/64"	0.9-2.0mm	MW 44-564-25
	Contact Tip HD	0.045"	1.1mm	MW 14H-45		Conduit Assy (Liner) Nylon 15'/4.5m	.035"-.045"	0.6-0.9mm	MW 44N-3544-45
	Contact Tip HD	0.052"	1.3mm	MW 14H-52					
	Contact Tip HD	1/16"	1.6mm	MW 14H-116					
	Contact Tip HD	5/64"	2.0mm	MW 14H-564					
	Contact Tip HD (Alum)	3/64"	1.2mm	MW 14AH-364					
	Contact Tip HD (Alum)	1/16"	1.6mm	MW 14AH-116					
19	Contact Tip Tapered Tip	0.030"	0.8mm	MW 14T-30					
	Contact Tip Tapered Tip	0.035"	0.9mm	MW 14T-35					
	Contact Tip Tapered Tip	0.040"	1.0mm	MW 14T-40					
	Contact Tip Tapered Tip	0.045"	1.1mm	MW 14T-45					

Series	Product Information & Specs	Part Number
TW5 CONSTRUCTOR 500A	MIG Gun TW5 1/16" 500A 10'	MW 510-116
	MIG Gun TW5 1/16" 10' Lincoln	MW L510-116
	MIG Gun TW5 1/16" 10' Miller	MW M510-116
	MIG Gun TW5 1/16" 10' Euro	MW X510-116
	MIG Gun TW5 1/16" 500A 12'	MW 512-116
	MIG Gun TW5 1/16" 12' Lincoln	MW L512-116
	MIG Gun TW5 1/16" 12' Miller	MW M512-116
	MIG Gun TW5 1/16" 12' Euro	MW X512-116
	MIG Gun TW5 1/16" 500A 15'	MW 515-116
	MIG Gun TW5 1/16" 15' Lincoln	MW L515-116
	MIG Gun TW5 3/32" 15' Lincoln	MW L515-332
	MIG Gun TW5 1/16" 15' Miller	MW M515-116
	MIG Gun TW5 3/32" 15' Miller	MW M515-332
	MIG Gun TW5 1/16" 15' Euro	MW X515-116
	MIG Gun TW5 1/16" 500A 20'	MW 520-116
	MIG Gun TW5 3/32" 20'	MW 520-332
	MIG Gun TW5 1/16" 20' Lincoln	MW L520-116
	MIG Gun TW5 3/32" 20' Lincoln	MW L520-332
	MIG Gun TW5 1/16" 20' Miller	MW M520-116
	MIG Gun TW5 3/32" 20' Miller	MW M520-332
	MIG Gun TW5 1/16" 20' Euro	MW X520-116
	MIG Gun TW5 1/16" 500A 25'	MW 525-116
	MIG Gun TW5 3/32" 25'	MW 525-332
	MIG Gun TW5 1/16" 25' Lincoln	MW L525-116
	MIG Gun TW5 3/32" 25' Lincoln	MW L525-332
	MIG Gun TW5 1/16" 25' Miller	MW M525-226
	MIG Gun TW5 3/32" 25' Miller	MW M525-332
	MIG Gun TW5 1/16" 25' Euro	MW X525-116



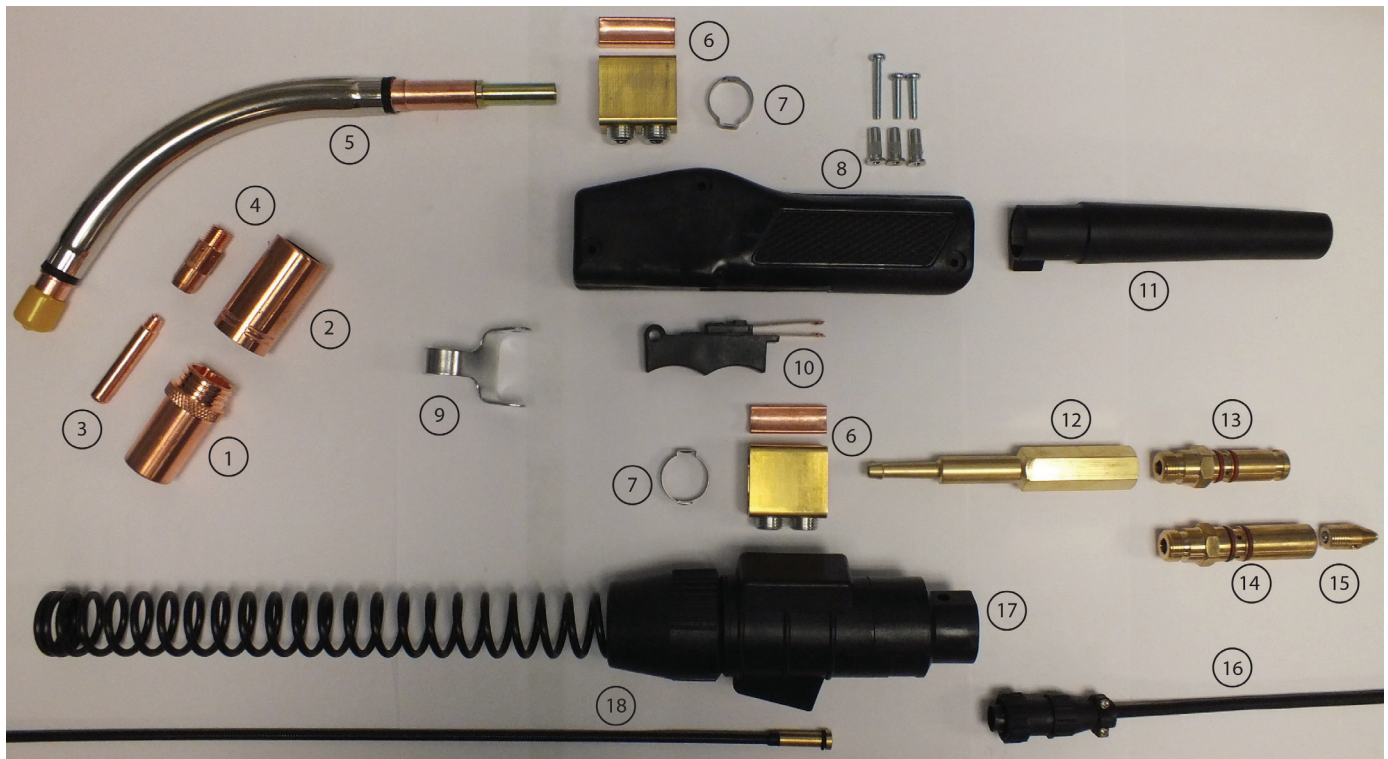
**ANY GUN CAN BE MADE WITH
NEARLY ANY POWER PIN UPON
REQUEST. REFER TO THE POWER PIN
GUIDE ON PAGE 130**



MODEL TW5		
Duty Cycle Using	%	Amps
CO ₂	100	500
Mixed Gas	100	390

For all trade name references, please refer to the last page for further information.
Images may vary.

REPLACEMENT GUNS & PARTS SUITABLE FOR TWECO STYLE MIG GUNS



Item	Description	Inches	Millimeters	Part Number	Item	Description	Part Number
1	Nozzle Course Thread	1/2"	12mm	MW 25CT-50	4	Gas Diffuser	MW 55
	Nozzle Course Thread	5/8"	16mm	MW 25CT-62		Gas Diffuser	MW 55SW
	Nozzle Course Thread	3/4"	20mm	MW 25CT-75		Gas Diffuser HD	MW 55H
2	Insulator			MW 35CT	5	Conductor Tube Assy 45°	MW 65-45J
3	Contact Tip HD	.035"	0.9mm	MW 15H-35		Conductor Tube Assy 60°	MW 65-60J
	Contact Tip HD	.040"	1.0mm	MW 15H-40		Conductor Tube Assy 80°	MW 65-80
	Contact Tip HD	.045"	1.1mm	MW 15H-45		Conductor Tube Assy	MW 65-180
	Contact Tip HD	.052"	1.3mm	MW 15H-52	6	Connector Block	MW 104
	Contact Tip HD	1/16"	1.6mm	MW 15H-116	7	Clamp Oetiker 22.6mm	MW 0C226
	Contact Tip HD	5/64"	2.0mm	MW 15H-564	8	Handle Assembly w/screws	MW 85WS
	Contact Tip HD	3/32"	2.4mm	MW 15H-332	9	Gun Hanger	MW 154
	Contact Tip HD	7/64"	2.8mm	MW 15H-764	10	Trigger Switch Assy	MW 94R
	Contact Tip HD (Alum)	3/64"	1.2mm	MW 15AH-364	11	Cable Support	MW 145-6
	Contact Tip HD (Alum)	1/16"	1.6mm	MW 15AH-116	12	Universal Machine End Fitting	MW R174-UA
	Contact Tip Flux Core Wire	.045"	1.1mm	MW 15HFC-45	13	Connection for TW Style	MW R174-T
	Contact Tip Flux Core Wire	1/16"	1.6mm	MW 15HFC-116	14	Connection for MI Style	MW R174-M
	Contact Tip Flux Core Wire	5/64"	2.0mm	MW 15HFC-564	15	Machine Plug Cap -Miller	MW R174MN
	Contact Tip Flux Core Wire	3/32"	2.4mm	MW 15HFC-332	16	Electrical Plug -Miller	MW 206429-1
	Contact Tip Flux Core Wire	7/64"	2.8mm	MW 15HFC-764	17	Universal Spring/Support	MW R185-H
18	Conduit Assy (Liner) 15'/4.5m	.035"-.045"	0.6-0.9mm	MW 45-3545-15			
	Conduit Assy (Liner) 15'/4.5m	.045"-1/16"	0.9-1.6mm	MW 45-116-15			
	Conduit Assy (Liner) 15'/4.5m	.045"-5/64"	0.9-1.1mm	MW 45-564-15			
	Conduit Assy (Liner) 15'/4.5m	.045"-3/32"	0.9-1.1mm	MW 45H-332-15			
	Conduit Assy (Liner) 15'/4.5m	.045"-7/64"	0.9-2.8mm	MW 45H-764-15			
	Conduit Assy (Liner) 15'/4.5m	.035"-.045"	0.6-0.9mm	MW 45-3545-25			
	Conduit Assy (Liner) 15'/4.5m	.045"-1/16"	0.9-1.6mm	MW 45-116-15			
	Conduit Assy (Liner)	.035"-.045"	0.6-0.9mm	MW 45N-3545-15			
	Nylon 15'/4.5m						
	Conduit Assy (Liner)	1/16"	1.6mm	MW 45N-116-15			
	Nylon 15'/4.5m						

***Masterweld guns are built with TW4 series liners

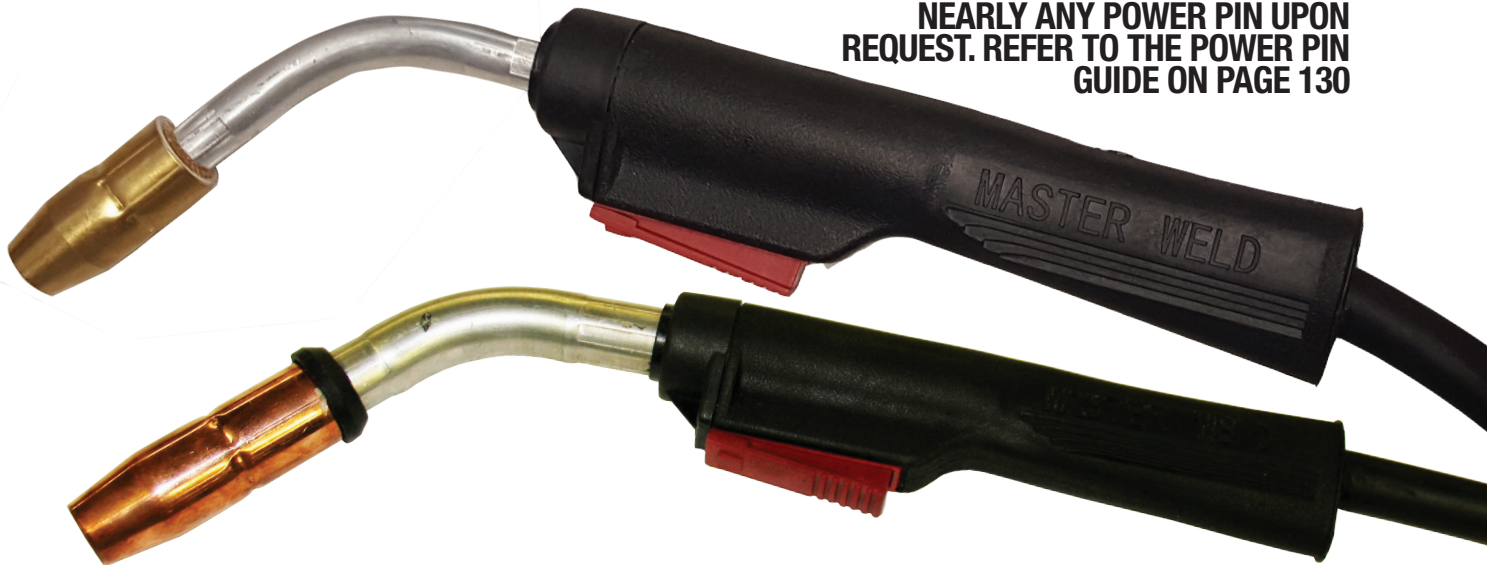
Series Product Information & Specs Part Number

CONSTRUCTOR MI STYLE



MIG Gun M10 .030-.035" 150A 10'	MW	195-605
MIG Gun M10 LWM .030-.035" 10'	MW	195-605-LWM
MIG Gun H10 .030-.035" 10'	MW	196-605-H
MIG Gun M10 .030-.035" 12'	MW	195-606
MIG Gun M10 .030-.035" 15'	MW	195-607
MIG Gun H10 .030-.035" 15'	MW	195-607-H
MIG Gun M15 .030-.035" 180A 10'	MW	169-589
MIG Gun M15 LWM .030-.035" 10'	MW	169-589LWM
MIG Gun M15 .030-.035" 12'	MW	169-591
MIG Gun M15 .030-.035" 15'	MW	169-593
MIG Gun M15 LWM .035-.045" 15'	MW	169-593LWM
MIG Gun M25 .030-.035" 250A 10'	MW	169-594
MIG Gun M25 .030-.035" 12'	MW	169-596
MIG Gun M25 .030-.035" 15'	MW	169-598
MIG Gun M25 LWM .030-.035" 15'	MW	169-598LWM
MIG Gun M25 .035-.045" 15'	MW	169-599
MIG Gun M25 LWM .035-.045" 15'	MW	169-599LWM
MIG Gun M25 .030-.035" 20'	MW	169-597
MIG Gun M25 .030-.035" 25'	MW	169-600
MIG Gun M40 .035-.045" 400A 10'	MW	169-602
MIG Gun M40 .035-.045" 12'	MW	169-604
MIG Gun M40 .035-.045" 15'	MW	169-606
MIG Gun M40 .035-.045" 20'	MW	169-607
MIG Gun M40 .035-.045" 25'	MW	169-608

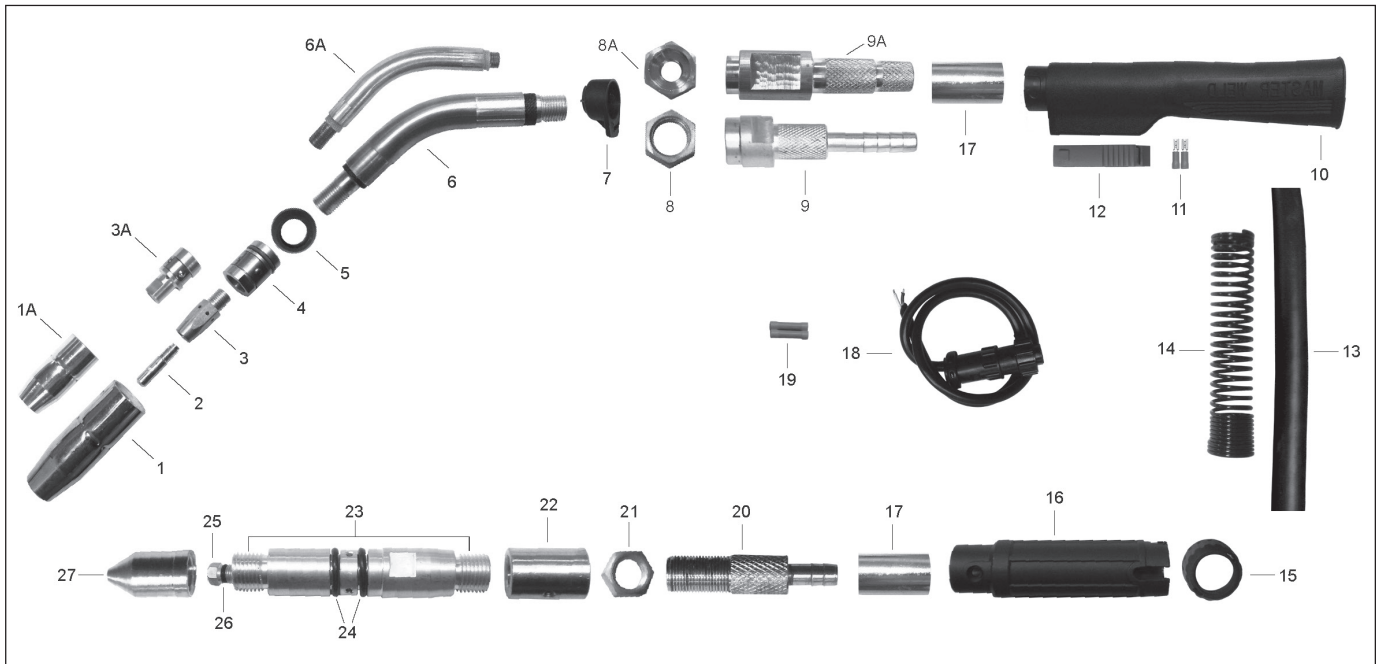
**ANY GUN CAN BE MADE WITH
NEARLY ANY POWER PIN UPON
REQUEST. REFER TO THE POWER PIN
GUIDE ON PAGE 130**



	MODEL M10, M15		MODEL M25		MODEL M40	
Duty Cycle Using	%	Amps	%	Amps	%	Amps
CO ₂	100	180	100	250	100	400
Mixed Gas	100	115	100	200	100	275

For all trade name references, please refer to the last page for further information.
Images may vary.

REPLACEMENT GUNS & PARTS SUITABLE FOR MILLER STYLE MIG GUNS



Item	Description	Inches	Millimeters	Part Number	Item	Description	Part Number
1A	Nozzle 1/2" Flush Tip M10, M15	1/2"	12mm	MW 169-715	7	Handle Locking Nut	MW 210-6
1	Nozzle 1/2" Recess 1/8" M25	1/2 / 1/8"	12mm/3.2mm	MW 169-724	8A	Jamb Nut M10, M15	MW 158-8
	Nozzle 5/8" Recess 1/8" M25	5/8 / 1/8"	16mm/3.2mm	MW 168-725	8	Jamb Nut M25	MW 208-2
	Nozzle 5/8" Flush Tip M25	5/8"	16mm	MW 169-726	9A	Cable End Fitting Front M10,15	MW CETRGF130
	Nozzle 5/8" Stickout 1/8" M25	5/8 / 1/8"	16mm/3.2mm	MW 169-727	9	Cable End Fitting Barb M25	MW CETR-S
2	Contact Tip 0.023" M10, M15, M25	0.023"	0.6mm	MW 087-299	10	Handle Front/Rear	MW 210-5
	Contact Tip 0.030" M10, M15, M25	0.030"	0.8mm	MW 000-067	11	Elect Terminal Female Flat	MW ETFMFS
	Contact Tip 0.035" M10, M15, M25	0.035"	0.9mm	MW 000-068	12	Switch MI M10,15,25 MIG Power Cable 250A	MW MPC200
	Contact Tip 0.045" M10, M15, M25	0.045"	1.1mm	MW 000-069	13	MIG Power Cable 180A	MW MEC150
3A	Tip Adaptor M10, M15			MW 169-716	14	Cable Support Spring	MW 141-4S
3	Tip Adaptor M25			MW 169-728	15	Adaptor Support Nut Small	MW ASN15S
4	Nozzle Retainer M25			MW 169-729	16	Adaptor Support Small	MW AS15S
5	Shock Washer suit M25			MW 169-730	17	Ferrule Copper Tube 3/4X1 1/2"	MW F1931
	Shock Washer suit M15			MW 169-717	18	Electrical 2 Pin Plug MI	MW 206429-1
6	Gooseneck 60° M25			MW 169-731	19	Electrical Terminal Wire Joiner	MW ETWJ
6A	Gooseneck 60° M10, M15			MW 169-718	20	Cable End Small Barb	MW CEBSB
NS	Gooseneck 60° M40			MW 169-744	21	Brass Nut M12 X 1 for CEBSB	MW DCE12N
25	Liner 15', M10, M15, M25, M40	.023-.030"	0.6-0.8mm	MW 194-010	22	Machine Adaptor for Tregaskiss	MW MAEF-STR
	Liner 15', M10, M15, M25, M40	.030-.035"	0.8-0.9mm	MW 194-011	23	Machine Plug Tregaskiss/Miller	MW MPTRM
	Liner 15', M10, M15, M25, M40	.035-.045"	0.9-1.1mm	MW 194-012	24	O'Ring for Miller Machine Plug	MW ORMDC
	Liner 15', M10, M15, M25, M40	1/16-5/64"	1.6-2.0mm	MW 194-013	26	O'Ring for Miller Style Liners	MW ORBE4
	Liner Teflon for Aluminum M10, M15, M25, M40	3/64"	1.2mm	MW 194-014	27	Machine Plug Tregaskiss/Miller Tip	MW MPTRMT
	Liner 25', M10, M15, M25, M40	.035-.045"	0.9-2.0mm	MW 194-015			
	Liner 25', M10, M15, M25, M40	.045-1/16"	1.1-1.6mm	MW 194-016			

Series	Product Information & Specs		Part Number
CONSTRUCTOR TR STYLE 300A	MIG Gun TR3 .035 300A 10' Euro	MW	3010-35E
	MIG Gun TR3 .035 10' Lincoln	MW	3010-35L
	MIG Gun TR3 .035 10' Lincoln Wirematic	MW	3010-35LWM
	MIG Gun TR3 .035 10' Miller	MW	3010-35M
	MIG Gun TR3 .035 10' Tweco	MW	3010-35T
	MIG Gun TR3 .035 12' Euro	MW	3012-35E
	MIG Gun TR3 .035 12' Lincoln	MW	3012-35L
	MIG Gun TR3 .035 12' Lincoln Wirematic	MW	3012-35LWM
	MIG Gun TR3 .035 12' Miller	MW	3012-35M
	MIG Gun TR3 .035 12' Tweco	MW	3012-35T
	MIG Gun TR3 .035 15' Euro	MW	3015-35E
	MIG Gun TR3 .035 15' Lincoln	MW	3015-35L
	MIG Gun TR3 .035 15' Lincoln Wirematic	MW	3015-35LWM
	MIG Gun TR3 .035 15' Miller	MW	3015-35M
	MIG Gun TR3 .035 15' Tweco	MW	3015-25T
	MIG Gun TR3 .035 20' Euro	MW	3020-35E
	MIG Gun TR3 .035 20' Lincoln	MW	3020-35L
	MIG Gun TR3 .035 20' Lincoln Wirematic	MW	3020-35LWM
	MIG Gun TR3 .035 20' Miller	MW	3020-35M
	MIG Gun TR3 .035 20' Tweco	MW	3020-35T
	MIG Gun TR3 .035 25' Euro	MW	3025-35E
	MIG Gun TR3 .035 25' Lincoln	MW	3025-35L
	MIG Gun TR3 .035 25' Lincoln Wirematic	MW	3025-35LWM
	MIG Gun TR3 .035 25' Miller	MW	3025-35M
	MIG Gun TR3 .035 25' Tweco	MW	3025-35T



**ANY GUN CAN BE MADE WITH
NEARLY ANY POWER PIN UPON
REQUEST. REFER TO THE POWER PIN
GUIDE ON PAGE 130**

MODEL TREGASKISS			
Duty Cycle Using	Gun Amperage	%	Amps
CO ₂	300	100	300
Mixed Gas		100	200
CO ₂	400	100	400
Mixed Gas		100	275
CO ₂	500	100	500
Mixed Gas		100	350

For all trade name references, please refer to the last page for further information.
Images may vary.

REPLACEMENT GUNS & PARTS SUITABLE FOR TREGASKISS STYLE MIG GUNS



Series	Product Information & Specs	Part Number
CONSTRUCTOR TR STYLE 400A	MIG Gun TR4 .045 400A 10' Euro	MW 4010-45E
	MIG Gun TR4 .045 10' Lincoln	MW 4010-45L
	MIG Gun TR4 .045 10' Lincoln Wirematic	MW 4010-45LWM
	MIG Gun TR4 .045 10' Miller	MW 4010-45M
	MIG Gun TR4 .045 10' Tweco	MW 4010-45T
	MIG Gun TR4 .045 12' Euro	MW 4012-45E
	MIG Gun TR4 .045 12' Lincoln	MW 4012-45L
	MIG Gun TR4 .045 12' Lincoln Wirematic	MW 4012-45LWM
	MIG Gun TR4 .045 12' Miller	MW 4012-45M
	MIG Gun TR4 1/16" 12' Miller	MW 4012-116M
	MIG Gun TR4 .045 12' Tweco	MW 4012-45T
	MIG Gun TR4 .045 15' Euro	MW 4015-45E
	MIG Gun TR4 .045 15' Lincoln	MW 4015-45L
	MIG Gun TR4 1/16" 15' Lincoln	MW 4015-116L
	MIG Gun TR4 .045 15' Lincoln Wirematic	MW 4015-45LWM
	MIG Gun TR4 .045 15' Miller	MW 4015-45M
	MIG Gun TR4 1/16" 15' Miller	MW 4015-116M
	MIG Gun TR4 .045 15' Tweco	MW 4015-45T
	MIG Gun TR4 1/16" 20' Euro	MW 4020-116E
	MIG Gun TR4 1/16" 20' Lincoln	MW 4020-116L
	MIG Gun TR4 1/16" 20' Lincoln Wirematic	MW 4020-116LWM
	MIG Gun TR4 1/16" 20' Miller	MW 4020-116M
	MIG Gun TR4 1/16" 20' Tweco	MW 4020-116T
	MIG Gun TR4 1/16" 25' Euro	MW 4025-116E
	MIG Gun TR4 1/16" 25' Lincoln	MW 4025-116L
	MIG Gun TR4 1/16" 25' Lincoln Wirematic	MW 4025-116LWM
	MIG Gun TR4 1/16" 25' Miller	MW 4025-116M
	MIG Gun TR4 1/16" 25' Tweco	MW 4025-116T



**ANY GUN CAN BE MADE WITH
NEARLY ANY POWER PIN UPON
REQUEST. REFER TO THE POWER PIN
GUIDE ON PAGE 130**



Series

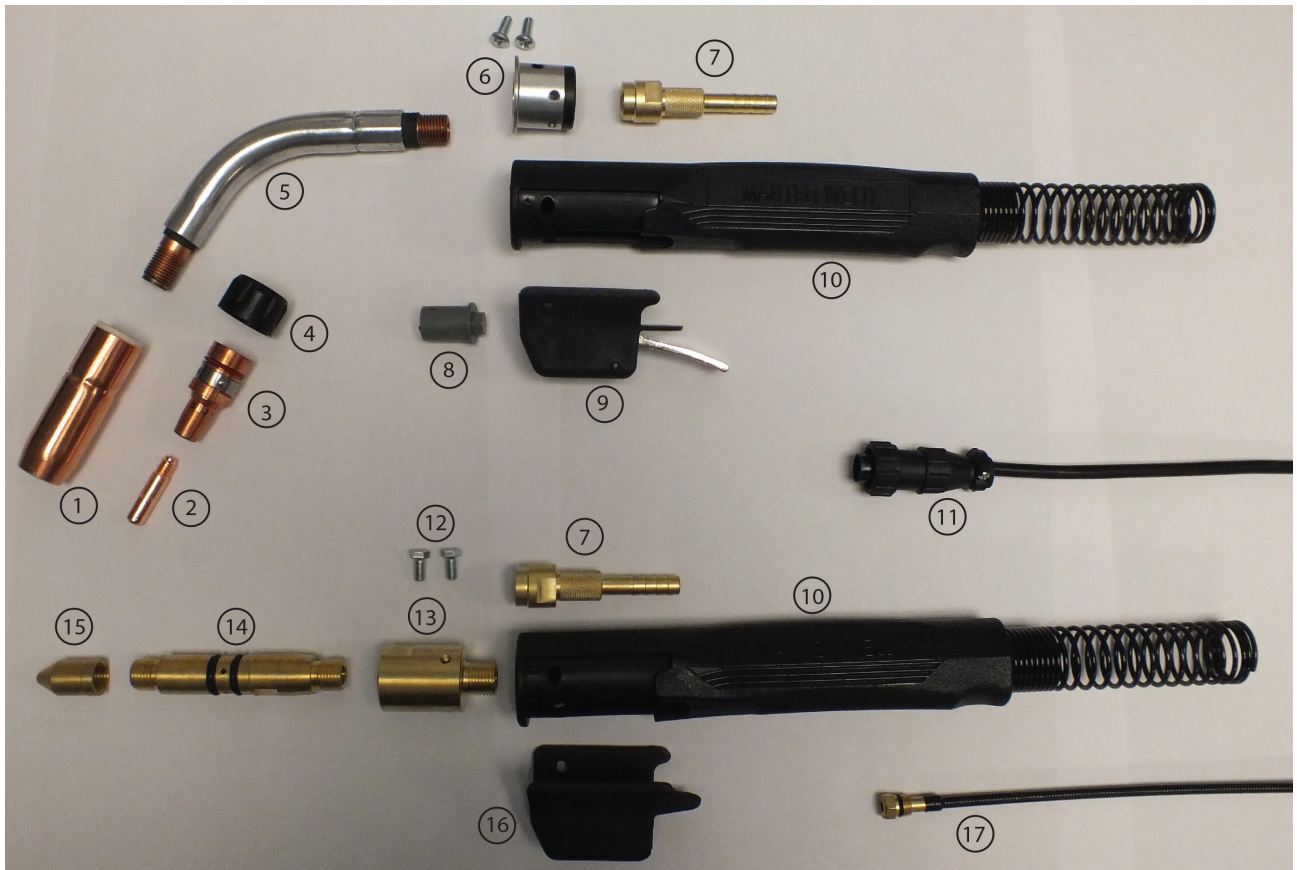
Product Information & Specs

Part Number

CONSTRUCTOR TR STYLE 500A



MIG Gun TR5 500A 1/16" 10' Euro	MW	5010-6E
MIG Gun TR5 1/16" 10' Lincoln	MW	5010-6E
MIG Gun TR5 1/16" 10' Miller	MW	5010-6E
MIG Gun TR5 1/16" 10' Tweco	MW	5010-6E
MIG Gun TR5 1/16" 10' Tweco 5	MW	5010-6E
MIG Gun TR5 1/16" 12' Euro	MW	5010-6E
MIG Gun TR5 1/16" 12' Lincoln	MW	5012-6L
MIG Gun TR5 1/16" 12' Miller	MW	5012-6M
MIG Gun TR5 1/16" 12' Tweco	MW	5012-6T
MIG Gun TR5 1/16" 12' Tweco 5	MW	5012-6T5
MIG Gun TR5 1/16" 15' Euro	MW	5015-6E
MIG Gun TR5 3/32" 15' Euro	MW	5015-332E
MIG Gun TR5 1/16" 15' Lincoln	MW	5015-6L
MIG Gun TR5 1/16" 15' Miller	MW	5015-6M
MIG Gun TR5 1/16" 15' Tweco	MW	5015-6T
MIG Gun TR5 1/16" 15' Tweco 5	MW	5015-6T5
MIG Gun TR5 3/32" 15' Tweco 5	MW	5015-332T
MIG Gun TR5 1/16" 20' Euro	MW	5020-6E
MIG Gun TR5 1/16" 20' Lincoln	MW	5020-6L
MIG Gun TR5 1/16" 20' Miller	MW	5020-6M
MIG Gun TR5 1/16" 20' Tweco	MW	5020-6T
MIG Gun TR5 1/16" 20' Tweco 5	MW	5020-6T5
MIG Gun TR5 1/16" 25' Euro	MW	5025-6E
MIG Gun TR5 1/16" 25' Lincoln	MW	5025-6L
MIG Gun TR5 1/16" 25' Miller	MW	5025-6M
MIG Gun TR5 1/16" 25' Tweco	MW	5025-6T
MIG Gun TR5 1/16" 25' Tweco 5	MW	5025-6T5



REPLACEMENT GUNS & PARTS SUITABLE FOR TREGASKISS STYLE MIG GUNS



Item	Description	Inches	Millimeters	Part Number	Item	Description	Part Number
1	Gas Nozzle Self Insulated	3/8"	10mm	MW 401-4-38	3	Gas Diffuser Standard	MW 404
	Gas Nozzle Self Insulated	1/2"	12mm	MW 401-4-50		Gas Diffuser Heavy Duty	MW 404-1
	Gas Nozzle Self Insulated	5/8"	16mm	MW 401-4-62		Retaining Head Heavy Duty	MW 404-3
	Gas Nozzle Self Insulated	3/4"	19mm	MW 401-4-75		Retaining Head HD Copper	MW 404-3C
	Gas Nozzle Heavy Duty	5/8"	16mm	MW 401-5-62		Nozzle Retainer	MW 402-3
	Gas Nozzle Heavy Duty	3/4"	19mm	MW 401-5-75	4	Shock Washer Standard	MW 402-7
	Gas Nozzle Heavy Duty	1/2"	12mm	MW 401-6-50		Shock Washer Heavy Duty	MW 402-5
	Gas Nozzle Heavy Duty	5/8"	16mm	MW 401-6-62	5	Gooseneck 300A 60°	MW 305-60
	Gas Nozzle Heavy Duty	3/4"	19mm	MW 401-6-75		Gooseneck 400A 45°	MW 405-45
	Gas Nozzle Heavy Duty	5/8"	16mm	MW 401-7-62		Gooseneck 400A 60°	MW 405-60
	Gas Nozzle Heavy Duty	3/4"	19mm	MW 401-7-75		Gooseneck 500A 45°	MW 505-45
	Gas Nozzle Heavy Duty	7/8"	22mm	MW 401-7-87		Gooseneck 500A 60°	MW 505-60
	Gas Nozzle	5/8"	16mm	MW 401-8-62	6	Body for Gooseneck	MW 407
	Gas Nozzle Heavy Duty	0.023"	0.6mm	MW 403-23	7	Cable End Large Barb - TR	MW CETR-L
	Gas Nozzle Heavy Duty	0.030"	0.8mm	MW 403-30	8	Switch Only	MW 411-1
	Gas Nozzle Heavy Duty	0.035"	0.9mm	MW 403-35	9	Trigger Switch Assembly	MW 411-2
	Gas Nozzle Heavy Duty	0.040"	1.0mm	MW 403-1.0	10	Handle and Spring Support	MW 410
	Gas Nozzle Heavy Duty	0.045"	1.1mm	MW 403-45	11	Electrical Plug - Miller	MW 206429-1
	Gas Nozzle Heavy Duty	0.052"	1.3mm	MW 403-52	12	Mounting Screws (10-24)	MW MHS12TR
	Gas Nozzle Heavy Duty	1/16"	1.6mm	MW 403-116	13	Power Pin Block	MW 414-400
2	Contact Tip Heavy Duty	0.030"	0.8mm	MW 403-1-30	14	Connection for MI Style	MW MPTRM
	Contact Tip Heavy Duty	0.035"	0.9mm	MW 403-1-35	15	Machine Plug Cap - Miller	MW MPTRMT
	Contact Tip Heavy Duty	0.040"	1.0mm	MW 403-1-1.0	16	Control Housing	MW 416-5
	Contact Tip Heavy Duty	0.045"	1.1mm	MW 403-1-45			
	Contact Tip Heavy Duty	0.052"	1.3mm	MW 403-1-52			
	Contact Tip Heavy Duty	1/16"	1.6mm	MW 403-1-116			
	Contact Tip Heavy Duty	5/64"	2.0mm	MW 403-1-564			
	Contact Tip Heavy Duty	3/32"	2.4mm	MW 403-1-332			
	Contact Tip Heavy Duty	1/8"	3.0mm	MW 403-1-1.8			
	Contact Tip Heavy Duty (Alum)	3/64"	1.2mm	MW 403-1-364			
	Contact Tip Tapered	0.023"	0.6mm	MW 403-2-23			
	Contact Tip Tapered	0.030"	0.8mm	MW 403-2-30			
	Contact Tip Tapered	0.035"	0.9mm	MW 403-2-35			
	Contact Tip Tapered	0.040"	1.0mm	MW 403-2-1.0			
	Contact Tip Tapered	0.045"	1.1mm	MW 403-2-45			
	Contact Tip Tapered HD	0.030"	0.8mm	MW 403-3-30			
	Contact Tip Tapered HD	0.035"	0.9mm	MW 403-3-35			
	Contact Tip Tapered HD	0.040"	1.0mm	MW 403-3-1.0			
	Contact Tip Tapered HD	0.045"	1.1mm	MW 403-3-45			
	Contact Tip Tapered HD	0.052"	1.3mm	MW 403-3-52			
	Contact Tip Tapered HD	1/16"	1.6mm	MW 403-3-116			
17	Conduit Assy 15'	0.023"	0.6mm	MW 415-23-15			
	Conduit Assy 15'	0.030"	0.8mm	MW 415-30-15			
	Conduit Assy 10'	0.035-0.045"	0.9mm-1.1mm	MW 415-35-10			
	Conduit Assy 15'	0.035-0.045"	0.9mm-1.1mm	MW 415-35-15			
	Conduit Assy 25'	0.035-0.045"	0.9-1.1mm	MW 415-35-25			
	Conduit Assy 10'	1/16"	1.6mm	MW 415-116-10			
	Conduit Assy 15'	1/16"	1.6mm	MW 415-116-15			
	Conduit Assy 25'	1/16"	1.6mm	MW 415-116-25			
	Conduit Assy 15'	5/64"	2.0mm	MW 415-564-15			
	Conduit Assy 15'	3/32"	2.4mm	MW 415-332-15			
	Conduit Assy 25'	3/32"	2.4mm	MW 415-332-25			
	Conduit Assy Alum 15'	0.035"	0.9mm	MW 415-35-2			
	Conduit Assy Alum 15'	1/16"	1.6mm	MW 415-116-2			

For all trade name references, please refer to the last page for further information.
Images may vary.

Series	Product Information & Specs	Part Number
CONSTRUCTOR BE STYLE 250A	MIG Gun BE2 250A .035-.045" 10' EZ	MW 2-4210A
	MIG Gun BE2 .035-.045" 10' Euro	MW 2-4210AE
	MIG Gun BE2 .035-.045" 10' Lincoln	MW 2-4210L
	MIG Gun BE2 .035-.045" 10' Lincoln Wirematic	MW 2-4210LWM
	MIG Gun BE2 .035-.045" 10' Miller	MW 2-4210M
	MIG Gun BE2 .035-.045" 10' Tweco	MW 2-4210T
	MIG Gun BE2 .035-.045" 12' EZ	MW 2-4212A
	MIG Gun BE2 .035-.045" 12' Euro	MW 2-4212AE
	MIG Gun BE2 .035-.045" 12' Lincoln	MW 2-4212L
	MIG Gun BE2 .035-.045" 12' Lincoln Wirematic	MW 2-4212LWM
	MIG Gun BE2 .035-.045" 12' Miller	MW 2-4212M
	MIG Gun BE2 .035-.045" 12' Tweco	MW 2-4212T
	MIG Gun BE2 .035-.045" 15' EZ	MW 2-4215A
	MIG Gun BE2 .035-.045" 15' Euro	MW 2-4215AE
	MIG Gun BE2 .035-.045" 15' Lincoln	MW 2-4215L
	MIG Gun BE2 .035-.045" 15' Lincoln Wirematic	MW 2-4215LWM
	MIG Gun BE2 .035-.045" 15' Miller	MW 2-4215M
	MIG Gun BE2 .035-.045" 15' Tweco	MW 2-4215T
	MIG Gun BE2 .035-.045" 20' EZ	MW 2-4220A
	MIG Gun BE2 .035-.045" 20' Euro	MW 2-4220AE
	MIG Gun BE2 .035-.045" 20' Lincoln Wirematic	MW 2-4220LWM
	MIG Gun BE2 .035-.045" 20' Miller	MW 2-4220M
	MIG Gun BE2 .035-.045" 20' Tweco	MW 2-4220T
	MIG Gun BE2 .035-.045" 25' EZ	MW 2-4220A
	MIG Gun BE2 .035-.045" 25' Euro	MW 2-4220AE
	MIG Gun BE2 .035-.045" 25' Lincoln Wirematic	MW 2-4220LWM
	MIG Gun BE2 .035-.045" 25' Miller	MW 2-4220M
	MIG Gun BE2 .035-.045" 25' Tweco	MW 2-4220T




**ANY GUN CAN BE MADE WITH
NEARLY ANY POWER PIN UPON
REQUEST. REFER TO THE POWER PIN
GUIDE ON PAGE 130**

MODEL BERNARD			
Duty Cycle Using	Gun Amperage	%	Amps
CO ₂	250	100	250
Mixed Gas		100	185
CO ₂	300	100	300
Mixed Gas		100	210
CO ₂	400	100	400
Mixed Gas		100	265

For all trade name references, please refer to the last page for further information.
Images may vary.

REPLACEMENT GUNS & PARTS SUITABLE FOR BERNARD STYLE MIG GUNS



Series	Product Information & Specs	Part Number
CONSTRUCTOR BE STYLE 300A 	MIG Gun BE3 300A .035-.045" 10' EZ	MW 2-4310A
	MIG Gun BE3 .035-.045" 10' Euro	MW 2-4310AE
	MIG Gun BE3 .035-.045" 10' Lincoln	MW 2-4310L
	MIG Gun BE3 .035-.045" 10' Lincoln Wirematic	MW 2-4310LWM
	MIG Gun BE3 .035-.045" 10' Miller	MW 2-4310M
	MIG Gun BE3 .035-.045" 10' Tweco	MW 2-4310T
	MIG Gun BE3 .035-.045" 12' EZ	MW 2-4312A
	MIG Gun BE3 .035-.045" 12' Euro	MW 2-4312AE
	MIG Gun BE3 .035-.045" 12' Lincoln	MW 2-4312L
	MIG Gun BE3 .035-.045" 12' Lincoln Wirematic	MW 2-4312LWM
	MIG Gun BE3 .035-.045" 12' Miller	MW 2-4312M
	MIG Gun BE3 .035-.045" 12' Tweco	MW 2-4312T
	MIG Gun BE3 .035-.045" 15' EZ	MW 2-4315A
	MIG Gun BE3 .035-.045" 15' Euro	MW 2-4315AE
	MIG Gun BE3 .035-.045" 15' Lincoln	MW 2-4315L
	MIG Gun BE3 .035-.045" 15' Lincoln Wirematic	MW 2-4315LWM
	MIG Gun BE3 .035-.045" 15' Miller	MW 2-4315M
	MIG Gun BE3 .035-.045" 15' Tweco	MW 2-4315T
	MIG Gun BE3 .035-.045" 20' EZ	MW 2-4320A
	MIG Gun BE3 .035-.045" 20' Euro	MW 2-4320AE
	MIG Gun BE3 .035-.045" 20' Lincoln Wirematic	MW 2-4320LWM
	MIG Gun BE3 .035-.045" 20' Miller	MW 2-4320M
	MIG Gun BE3 .035-.045" 20' Tweco	MW 2-4320T
	MIG Gun BE3 .035-.045" 25' EZ	MW 2-4325E
	MIG Gun BE3 .035-.045" 25' Euro	MW 2-4325AE
	MIG Gun BE3 .035-.045" 25' Lincoln Wirematic	MW 2-4325LWM
	MIG Gun BE3 .035-.045" 25' Miller	MW 2-4325M
	MIG Gun BE3 .035-.045" 25' Tweco	MW 2-4325T

CONSTRUCTOR BE STYLE 400A



MIG Gun BE4 400A 1/16" 10' EZ	MW 2-4410A
MIG Gun BE4 1/16" 10' Euro	MW 2-4410AE
MIG Gun BE4 1/16" 10' Lincoln	MW 2-4410L
MIG Gun BE4 1/16" 10' Lincoln Wirematic	MW 2-4410LWM
MIG Gun BE4 1/16" 10' Miller	MW 2-4410M
MIG Gun BE4 1/16" 10' Tweco	MW 2-4410T
MIG Gun BE4 1/16" 12' EZ	MW 2-4412A
MIG Gun BE4 1/16" 12' Euro	MW 2-4412AE
MIG Gun BE4 1/16" 12' Lincoln	MW 2-4412L
MIG Gun BE4 1/16" 12' Lincoln Wirematic	MW 2-4412LWM
MIG Gun BE4 1/16" 12' Miller	MW 2-4412M
MIG Gun BE4 1/16" 12' Tweco	MW 2-4412T
MIG Gun BE4 1/16" 15' EZ	MW 2-4415A
MIG Gun BE4 1/16" 15' Euro	MW 2-4415AE
MIG Gun BE4 1/16" 15' Lincoln	MW 2-4415L
MIG Gun BE4 1/16" 15' Lincoln Wirematic	MW 2-4415LWM
MIG Gun BE4 1/16" 15' Miller	MW 2-4414M
MIG Gun BE4 1/16" 15' Tweco	MW 2-4415T
MIG Gun BE4 1/16" 20' EZ	MW 2-4420A
MIG Gun BE4 1/16" 20' Euro	MW 2-4420AE
MIG Gun BE4 1/16" 20' Lincoln Wirematic	MW 2-4420LWM
MIG Gun BE4 1/16" 20' Miller	MW 2-4420M
MIG Gun BE4 1/16" 20' Tweco	MW 2-4420T
MIG Gun BE4 1/16" 25' EZ	MW 2-4425A
MIG Gun BE4 1/16" 25' Euro	MW 2-4425AE
MIG Gun BE4 1/16" 25' Lincoln Wirematic	MW 2-4425LWM
MIG Gun BE4 1/16" 25' Miller	MW 2-4425M
MIG Gun BE4 1/16" 25' Tweco	MW 2-4425T

**ANY GUN CAN BE MADE
WITH NEARLY ANY POWER
PIN UPON REQUEST. REFER
TO THE POWER PIN GUIDE
ON PAGE 129**

For all trade name references, please refer to the last page for further information. Images may vary.

Series	Product Information & Specs	Part Number
CONSTRUCTOR BE STYLE 500A	MIG Gun BE5 500A 1/16" 10' EZ	MW 2-4510
	MIG Gun BE5 1/16" 10' Euro	MW 2-4510E
	MIG Gun BE5 1/16" 10' Lincoln	MW 2-4510L
	MIG Gun BE5 1/16" 10' Miller	MW 2-4510M
	MIG Gun BE5 1/16" 10' Tweco	MW 2-4510T
	MIG Gun BE5 1/16" 10' Tweco 5	MW 2-4510T5
	MIG Gun BE5 1/16" 12' EZ	MW 2-4512
	MIG Gun BE5 1/16" 12' Euro	MW 2-4512E
	MIG Gun BE5 1/16" 12' Lincoln	MW 2-4512L
	MIG Gun BE5 1/16" 12' Miller	MW 2-4512M
	MIG Gun BE5 1/16" 12' Tweco	MW 2-4512T
	MIG Gun BE5 1/16" 12' Tweco 5	MW 2-4512T5
	MIG Gun BE5 1/16" 15' EZ	MW 2-4515
	MIG Gun BE5 1/16" 15' Euro	MW 2-4515E
	MIG Gun BE5 1/16" 15' Lincoln	MW 2-4515L
	MIG Gun BE5 1/16" 15' Miller	MW 2-4515M
	MIG Gun BE5 1/16" 15' Tweco	MW 2-4515T
	MIG Gun BE5 1/16" 15' Tweco 5	MW 2-4515T5
	MIG Gun BE5 1/16" 20' EZ	MW 2-4520
	MIG Gun BE5 1/16" 20' Euro	MW 2-4520E
	MIG Gun BE5 1/16" 20' Lincoln	MW 2-4520L
	MIG Gun BE5 1/16" 20' Miller	MW 2-4520M
	MIG Gun BE5 1/16" 20' Tweco	MW 2-4520T
	MIG Gun BE5 1/16" 20' Tweco 5	MW 2-4520T5
	MIG Gun BE5 1/16" 25' EZ	MW 2-4525
	MIG Gun BE5 1/16" 25' Euro	MW 2-4525E
	MIG Gun BE5 1/16" 25' Lincoln	MW 2-4525L
	MIG Gun BE5 1/16" 25' Miller	MW 2-4525M
	MIG Gun BE5 1/16" 25' Tweco	MW 2-4525T
	MIG Gun BE5 1/16" 25' Tweco 5	MW 2-4525T5

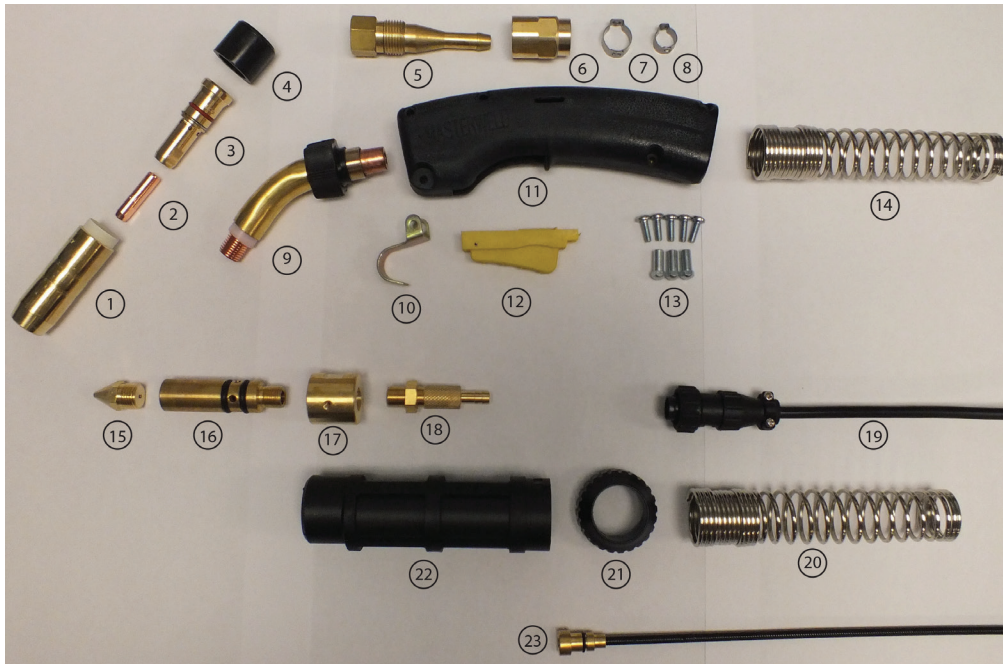


**ANY GUN CAN BE MADE WITH
NEARLY ANY POWER PIN UPON
REQUEST. REFER TO THE POWER PIN
GUIDE ON PAGE 130**



For all trade name references, please refer to the last page for further information.
Images may vary.

REPLACEMENT GUNS & PARTS SUITABLE FOR BERNARD STYLE MIG GUNS



Item	Description	Inches	Millimeters	Part Number	Item	Description	Part Number
1	Nozzle Straight Brass			MW 4393	3	Head for Long Elliptical Tips - BE2	MW 4235
	Nozzle Straight Copper			MW 4392		Head for Short Elliptical Tips - BE3	MW 4335
	Nozzle Tapered Brass			MW 4294		Head for Short Tips - BE4	MW 4435
	Nozzle Tapered Copper			MW 4295A		Rubber Cap - BE3	MW 4323R
	Nozzle Pipeline Brass			MW 4295		Rubber Cap - BE4	MW 4423R
	Nozzle Tapered Brass			MW 4391	4	End Fitting - BE3	MW 4313B
2	Contact Tip Long Elliptical	0.030"	0.8mm	MW 1588	5	End Fitting - BE5	MW 4513B
	Contact Tip Long Elliptical	0.035"	0.9mm	MW 1589		Cone Nut- BE3	MW 4305
	Contact Tip Long Elliptical	0.045"	1.1mm	MW 1590	6	Cone Nut - BE4	MW 4416
	Contact Tip Long Elliptical	1/16"	1.6mm	MW 1591		Clamp Oetiker 13.8-15.7mm	MW OC157
	Contact Tip Long Elliptical	5/64"	2.0mm	MW 1592	7	Clamp Oetiker 9.7-11.3mm	MW OC113
	Contact Tip Long Elliptical	3/32"	2.4mm	MW 1593	8	Body Tube - BE3	MW 4786
	Contact Tip Long Elliptical	0.040"	1.0mm	MW 1596	9	Body Tube - BE4	MW 4790
	Contact Tip Long Elliptical	0.045"	1.1mm	MW 1598		Body Tube - BE5	MW 4794
	Contact Tip Short Elliptical	0.030"	0.8mm	MW 7488		Hanger	MW 1790002
	Contact Tip Short Elliptical	0.035"	0.9mm	MW 7489	10	Handle Assembly - BE3	MW 1780006
	Contact Tip Short Elliptical	0.045"	1.1mm	MW 7490	11	Handle Assemble - BE5	MW 4408
	Contact Tip Short Elliptical	1/16"	1.6mm	MW 7491		Trigger Assembly	MW 5662
	Contact Tip Short Elliptical	5/64"	2.0mm	MW 7492	12	Trigger Switch - BE5	MW 4422
	Contact Tip Short Elliptical	3/32"	2.4mm	MW 7493	NS	Handle Screws for 4408 Handle	MW MHS-B
	Contact Tip Short Elliptical	7/64"	2.6mm	MW 7494	13	Handle Nut BE Style	MW MHN-B
	Contact Tip Short Elliptical	0.040"	1.0mm	MW 7496	14	Cable Spring -Machine Side	MW 144-6S
	Contact Tip Short Elliptical	0.023"	0.6mm	MW 7497	15	Machine Plug Tip - Miller	MW MPMT-2
	Contact Tip Short Elliptical Alum	0.045"	1.1mm	MW 7498	16	Machine Plug - Miller	MW MPMBE
	Contact Tip Tapered	0.035"	0.9mm	MW 4281	17	Machine Adaption End Fitting	MW MAEF
	Contact Tip Tapered	0.045"	1.1mm	MW 4282	18	Small Cable End	MW CEBSB
	Contact Tip Tapered	0.030"	0.8mm	MW 4285	19	Electrical 2-Pin Plug - Miller	MW 206429-1
23	Conduit Assembly Liner 15'	0.035"	0.9mm	MW 43015	20	Cable Support Spring -TW4/5	MW 144-6S
	Conduit Assembly Liner 15'	0.045"	1.1mm	MW 43115	21	Adaptor Support Nut	MW ASN15
	Conduit Assembly Liner 15'	1/16"	1.6mm	MW 43215	22	Adaptor Support	MW AS15
	Conduit Assembly Liner 25'	.035-0.045"	0.9-1.1mm	MW 43125			
	Conduit Assembly Liner 25'	.045-1/16"	1.1-1.6mm	MW 43225			
	Conduit Assembly Liner 15'	.045-1/16"	1.1-1.6mm	MW 44215			
	Conduit Assembly Liner 25'	.045-1/16"	1.1-1.6mm	MW 44225			

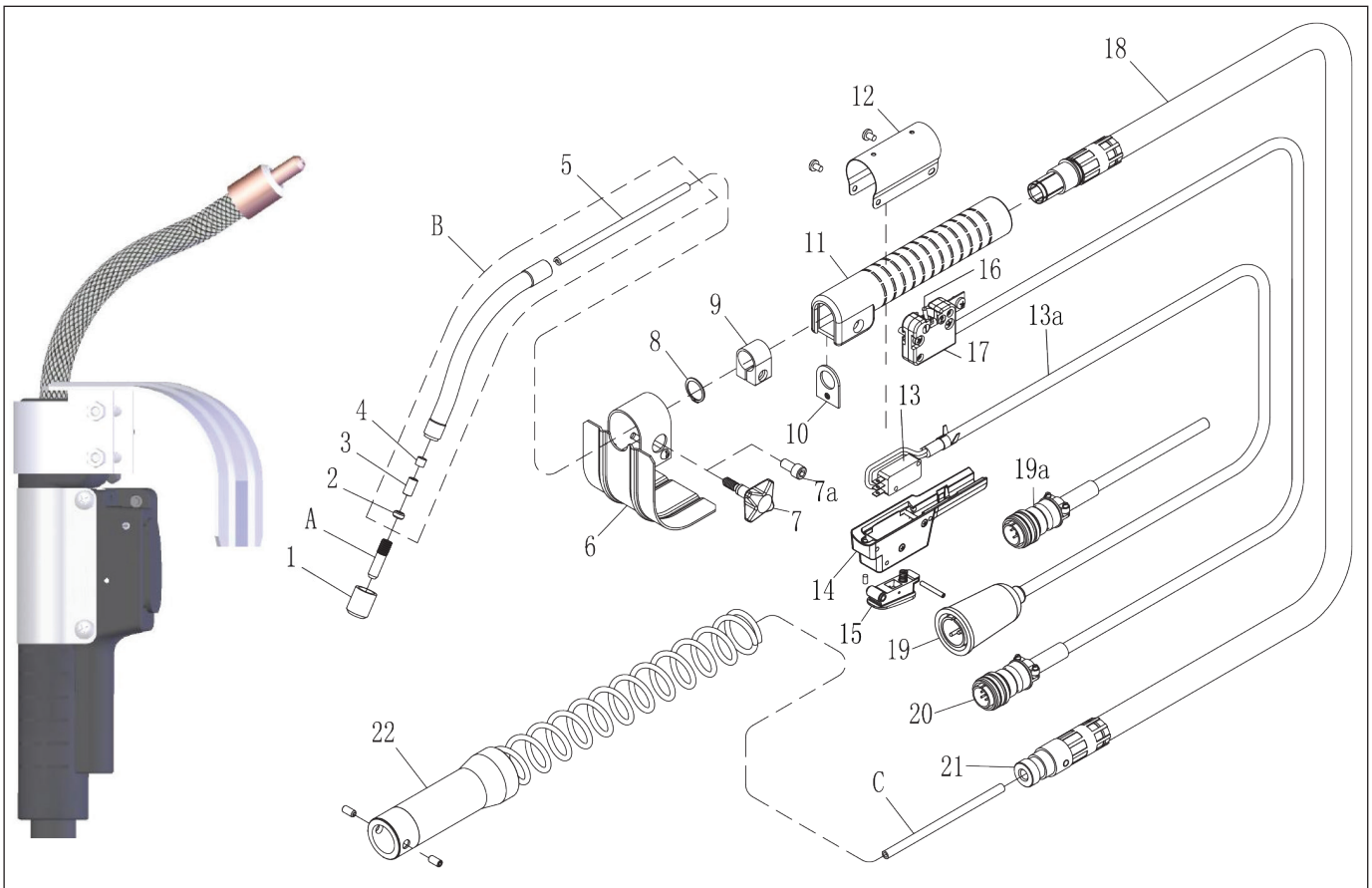
Series	Product Information & Specs	Part Number
CONSTRUCTION STYLE INNERSHIELD	MIG Gun K126 Flux Cored 350A 10'	MW M12462-10
	MIG Gun K126 Euro 10'	MW M12462-10E
	MIG Gun K126 Flux Cored 15'	MW M12462-15
	MIG Gun K126 Euro	MW M12462-15E



350 AMP INNERSHIELD MIG GUN

For all trade name references, please refer to the last page for further information.
Images may vary.

REPLACEMENT GUNS & PARTS SUITABLE FOR LINCOLN STYLE MIG GUNS



Item	Description	Inches	Millimeters	Part Number	Item	Description	Part Number
A	Contact Tip 0.045"	0.045"	1.2mm	MW T14050-045	6	Heat Shield Assembly	MW S13037
	Contact Tip 1/16"	1/16"	1.6mm	MW T14050-068	9	Clamp-Power Cable with	MW S15921-2
	Contact Tip 3/32"	3/32"	2.4mm	MW T14050-3/32	10	Screw	MW T12027
	Contact Tip 5/64"	5/64"	2.0mm	MW T14050-5/64	11	Spatter Shield	MW L5169H
B	Gooseneck 50° 6"			MW M11476	13	Handle	MW T12485
	Gooseneck 30° 12"			MW M13304-12	15	Micro Switch	MW T12565C
	Gooseneck 50° 12"			MW M13304-12-50	18	Switch Assembly w/ Plug	MW CAK126-10
	Gooseneck 30° 6"			MW M13304-6	19	Cable Assembly 10'	MW CAK126-15
1	Thread Protector			MW T12313		Cable Assembly 15'	MW PA5
5	Replacement Liner 10'	0.045" - 1/16"	1.2mm-1.6mm	MW 15-129	22	5 Pin Amphenol Plug - LI Style	MW L5993-2CS
	Replacement Liner 10'	5/64" - 3/32"	2.0mm-2.4mm	MW 15-130		Cable Support Assembly	MW ADK126M
	Replacement Liner 15'	0.045" - 1/16"	1.2mm-1.6mm	MW 15-134		Adaptor Kit K126 to MI Style	
	Replacement Liner 15'	5/64" - 3/32"	2.0mm-2.4mm	MW 15-135			

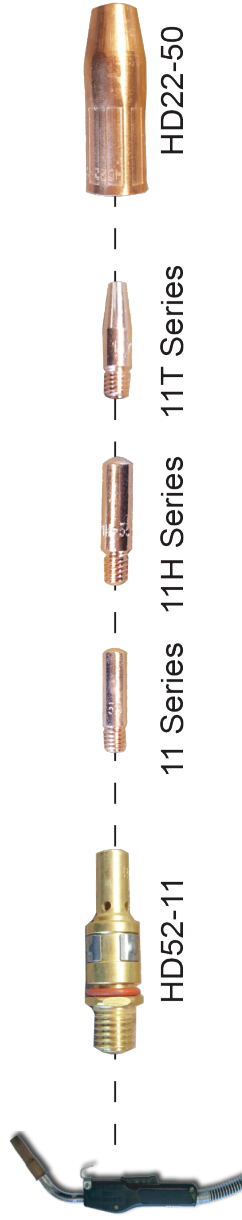


MW Part Number **174LWM** **174 M** **174L** **174X** **MPTRH** **214-2**

Feeder Brand	Feeder Model	Power Pin
Airco	Auto Pack 130, DIP-Pack 200, Dipstick 160, System, Universal, Mity 1 Med20, MED20 Synergic, MED40, MED40 Synergic, Auto Pack 140, (Dip Pack 200, 250)	425 Euro
Century	All-Star, Solar2-125, Solar-165 117-003	425 Euro
Cloos	Euro-Syle	214-42
ESAB	MED30, MIG 2E, MIG 4HD Dual, Mobile Master, ESABMIG C420	425 Euro
Hansen	MIG 160, 1000, 2000	425 Euro
Hobart	200, 2400 (Large Pin)	Tweco #5
Hobart	Handler 135, Handler 175	X214-29
Lincoln	LN7, LN8, LN9, LN22, LN25, Suitcase, LN741, Synergic 7	214-2 Lincoln
Lincoln	PowerWave 450, Synergic 7	425 Euro
Linde/L-Tec	MIG Master 250, 4HD, MIG 2E	425 Euro
Miller	Firefly 130	X214-29
Panasonic	Panasonic, Gun Slinger 260	214-13 Panasonic
Powcon	PD10, 22 Series, 60 Series, PDVS11	425 Euro

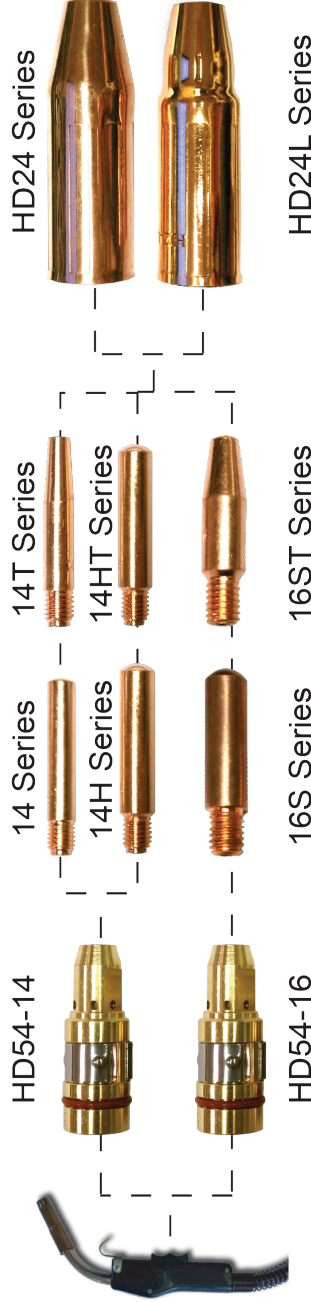
For all trade name references, please refer to the last page for further information. Images may vary.

HEAVY DUTY PARTS INTERCHANGEABLE WITH TW AND BE STYLE GUNS



TW2

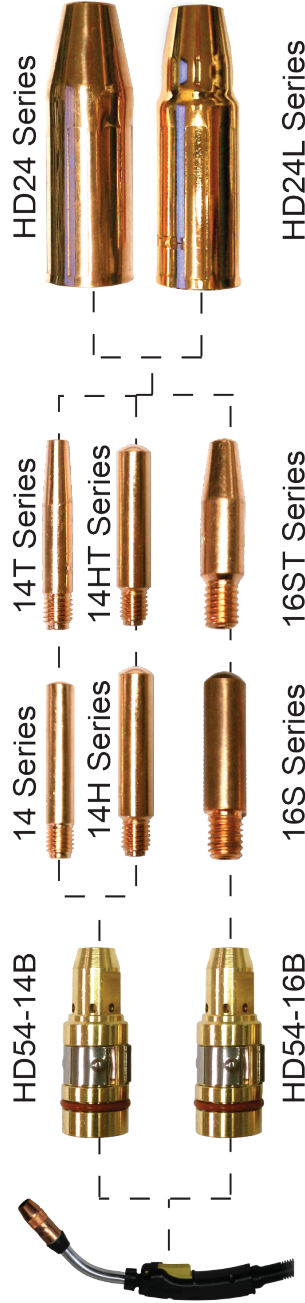
Diffusers HD52-11
Nozzles HD22-50
Tips 11, 11H, 11HT



TW3 & TW4

Diffusers HD54-14, HD54-16
Nozzles HD24, HD24L
Tips 14, 14H, 14T, 14HT

Suitable Replacements for Bernard® Elliptical® Consumables



BE

Diffusers HD54-14B, HD54-16B
Nozzles HD24, HD24L
Tips 14, 14H, 14T, 14HT

Fits on All Bernard Guns!

For all trade name references, please refer to the last page for further information. Images may vary.

TOLL FREE: 800.346.5368 FAX: 877.346.5368

INWELDCORPORATION.COM



Series

Product Information & Specs

Part Number

**TM 9 SERIES
130 AMP AIR COOLED**



TIG Torch Pack TM9 130A 12' 2 pc. Cable	MW	9-12-2
TIG Torch Pack TM9 12' Dinse 25 Connector	MW	9-12-2Q
TIG Torch Pack TM9 12' 1 pc. Cable	MW	9-12R
TIG Torch Pack TM9 12' Dinse 25 Connector	MW	9-12RQ
TIG Torch Pack TM9 25' 2 pc. Cable	MW	9-25-2
TIG Torch Pack TM9 25' Dinse 25 Connector	MW	9-25-2Q
TIG Torch Pack TM9 25' 1 pc. Cable	MW	9-25R
TIG Torch Pack TM9 25' Dinse 25 Connector	MW	9-25RQ
TIG Torch Pack TM9V 12' 2 pc. Cable	MW	9V-12-2
TIG Torch Pack TM9V 12' Dinse 25 Connector	MW	9V-12-2Q
TIG Torch Pack TM9V 12' 1 pc. Cable	MW	9V-12R
TIG Torch Pack TM9V 12' Dinse 25 Connector	MW	9V-12RQ
TIG Torch Pack TM9V 25' 2 pc. Cable	MW	9V-25-2
TIG Torch Pack TM9V 25' Dinse 25 Connector	MW	9V-25-2Q
TIG Torch Pack TM9V 25' 1 pc. Cable	MW	9V-25R
TIG Torch Pack TM9V 25' Dinse 25 Connector	MW	9V-25RQ
TIG Torch Pack TM9F 12' 2 pc. Cable	MW	9F-12-2
TIG Torch Pack TM9F 12' Dinse 25 Connector	MW	9F-12-2Q
TIG Torch Pack TM9F 12' 1pc. Cable	MW	9F-12R
TIG Torch Pack TM9F 12' Dinse 25 Connector	MW	9F-12RQ
TIG Torch Pack TM9F 12' 1 pc. Cable, Saver	MW	9F-12R-S
TIG Torch Pack TM9F 25' 2 pc. Cable	MW	9F-25-2
TIG Torch Pack TM9F 25' Dinse 25 Connector	MW	9F-25-2Q
TIG Torch Pack TM9F 25 1 pc. Cable	MW	9F-25R
TIG Torch Pack TM9F 25' Dinse 25 Connector	MW	9F-25RQ
TIG Torch Pack TM9F 25' 1 pc. Cable, Saver	MW	9F-25R-S
TIG Torch Pack TM9FV 12' 2 pc. Cable	MW	9FV-12-2
TIG Torch Pack TM9FV 12' Dinse 25 Connector	MW	9FV-12-2Q
TIG Torch Pack TM9FV 12 1 pc. Cable	MW	9FV-12R
TIG Torch Pack TM9FV 12' Dinse 25 Connector	MW	9FV-12RQ
TIG Torch Pack TM9FV 12' 1 pc. Cable, Saver	MW	9FV-12R-S
TIG Torch Pack TM9FV 25' 2 pc. Cable	MW	9FV-25-2
TIG Torch Pack TM9FV 25' Dinse 25 Connector	MW	9FV-25-2Q
TIG Torch Pack TM9FV 25' 1 pc. Cable	MW	9FV-25R
TIG Torch Pack TM9FV 25' Dinse 25 Connector	MW	9FV-25RQ
TIG Torch Pack TM9FV 25' 1 pc. Cable, Saver	MW	9FV-25R-S
TIG Torch Pack TM9S 12'	MW	9S-12R
TIG Torch Pack TM9S 25'	MW	9S-25R

Torch Body Solid	TM	9
Torch Body w/ Gas Valve	TM	9V
Torch Body Flexible	TM	9F
Torch Body Flexible w/ Gas Valve	TM	9FV
Handle Ribbed	TM	105Z55R
Handle Smooth	TM	105Z55

For all trade name references, please refer to the last page for further information. Images may vary.

Cup	Collet Body	Collet	Heatshield	Torch	Backcap
ALUMINA 4 13N08 - 1/4" 5 13N09 - 5/16" 6 13N10 - 3/8" 7 13N11 - 7/16" 8 13N12 - 1/2" 10 13N13 - 5/8"	STANDARD 13N25 - 0.020" 13N26 - 0.040" 13N27 - 1/16" 13N28 - 3/32" 13N29 - 1/8"	STANDARD 13N20 - 0.020" 13N21 - 0.040" 13N22 - 1/16" 13N23 - 3/32" 13N24 - 1/8"	STANDARD 598882		Short 41V33
ALUMINA - GAS LENS 4 53N58 - 1/4" 5 53N59 - 5/16" 6 53N60 - 3/8" 7 53N61 - 7/16" 8 53N61S - 1/2"	GAS LENS 45V41 - 0.020" 45V42 - 0.040" 45V43 - 1/16" 45V44 - 3/32" 45V45 - 1/8"				Medium 41V35
ALUMINA - LARGE DIA. 6 57N75 - 3/8" 8 57N74 - 1/2" 10 53N88 - 5/8" 11 53N89 - Short 12 53N87 - 3/4"	GAS LENS LARGE DIA. 45V0204S - 0.020" 45V116L - 1/16" 45V64S - 3/32" 995795S - 1/8"	LONG COLLET 13N20L - 0.020" 13N21L - 0.040" 13N22L - 1/16" 13N23L - 3/32" 13N24L - 1/8"	LARGE DIAM. 54N63-20		Long 41V24

ADDITIONAL NOZZLES, CUPS AND LENSES		
LAVA NOZZLE	LONG LAVA NOZZLE	EXTRA LONG LAVA
13N14 - 1/4"	796F70 - 3/16"	796F64 - 3/16"
13N15 - 5/16"	796F71 - 1/4"	796F75 - 1/4"
13N16 - 3/8"	796F72 - 5/16"	796F76 - 5/16"
13N17 - 7/16"	796F73 - 5/8"	796F77 - 3/8"
13N18 - 1/2"		
13N19 - 5/8"		

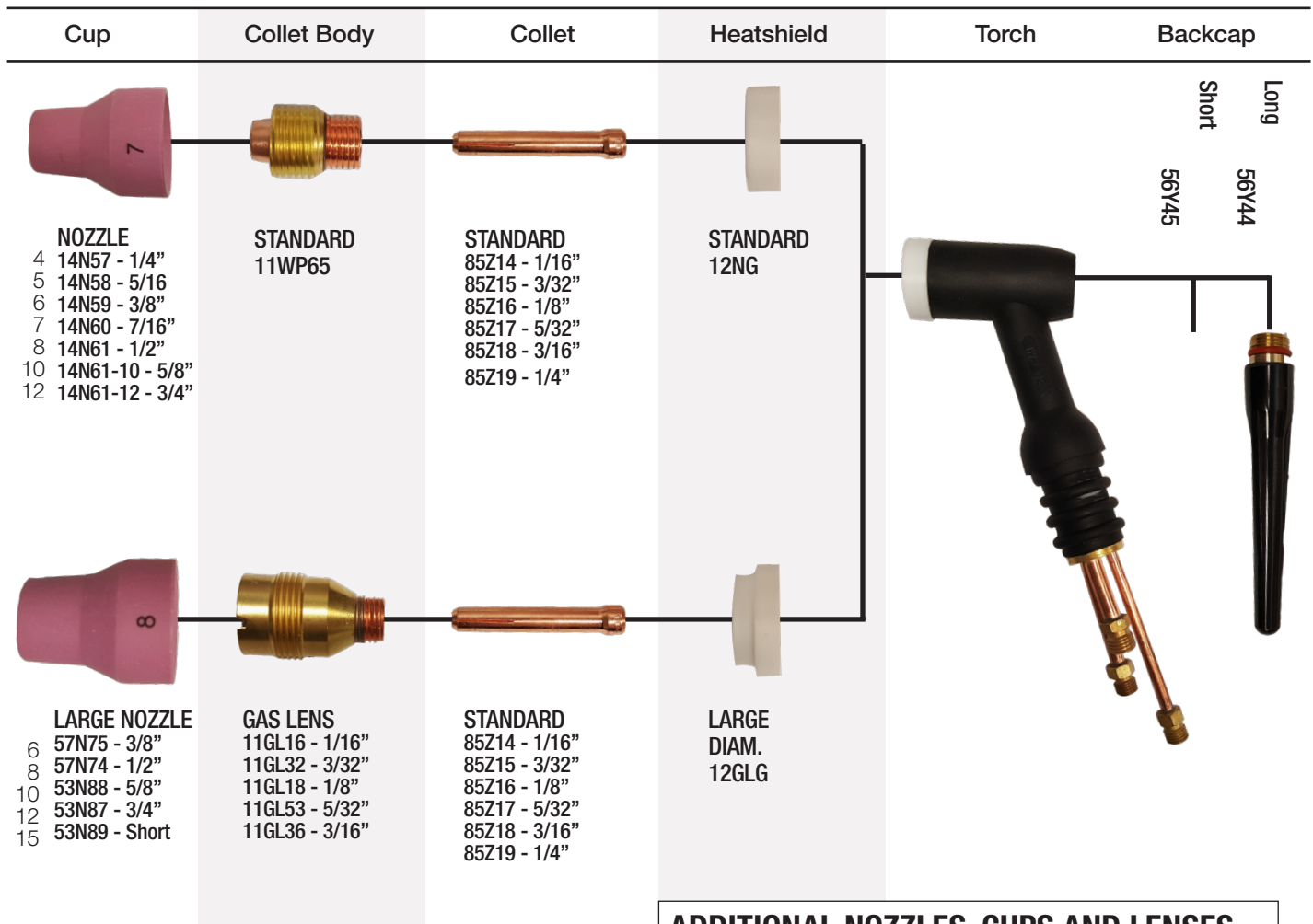
ADDITIONAL PARTS

Description	Part Number	Description	Part Number
O-Ring for Back Cap	TM 98W77	Back Cap Insulator	TM 9-4
Gas Valve	TM VS2	Adaptor 3/8" UNF to 5/8" UNF for TEC25/50	TM PCA2-4
Gas Hose Nipple	TM N17-1	10-25mm Dinse Connector (1 pc. Cable)	TM TEC25
Power Cable Fitting	TM C17-1	35-50mm Dinse Connector (1 pc. Cable)	TM TEC50
Argon Nut	TM 136Z08	10-25mm Dinse Connector Male	TM CCD11
Power Cable Lug - 2 Piece	TM T62	35-50mm Dinse Connector Male	TM CCD21
Power Cable Adapter (1 pc. Cable Only)	TM 105Z57	10-25mm Flow Thru Dinse Set	TM CCD1FT
12' 2 Piece Power Cable Assembly	TM 57Y01-2	35-50mm Flow Thru Dinse Set	TM CCD2FT
25' 2 Piece Power Cable Assembly	TM 57Y03-2	Rubber Boot for TEC Connector	TM TECBOOT
Power Cable Fitting (1 pc. Cable Only)	TM 57Y10	Accessory Kit	TM AK1
12' Power Cable	TM 57Y01R	Wire Ties	TM 53N04
25' Power Cable	TM 57Y03R	Bulk Gas Hose (100'/30.5m Lengths)	TM BRT1
Argon Nipple	TM 53N10-3MM		
12' Gas Hose (Rubber-Vinyl Polymer)	TM 45V09		
25' Gas Hose (Rubber-Vinyl Polymer)	TM 45V10		

Series	Product Information & Specs	Part Number
TM 12 SERIES 500 AMP WATER COOLED	TIG Torch Pack TM12 500A 12' Water Cooled	MW 12-12R
	TIG Torch Pack TM12 500A 25'	MW 12-25R
	Torch Body Solid	TM 12
	Torch Handle	TM 85WP13



For all trade name references, please refer to the last page for further information.
Images may vary.



ADDITIONAL NOZZLES, CUPS AND LENSES			
	LONG NOZZLE		EXTRA LONG LAVA
6	57N75L - 3/8"	6	57N75XL - 1/4"
8	57N74L - 1/2"	8	57N74XL - 1/2"
10	53N88L - 5/8"	10	53N88XL - 5/8"
12	53N87L - 3/4"	12	53N87XL - 3/4"
15	53N89L - Short		

ADDITIONAL PARTS

Description	Part Number	Description	Part Number
Adapter	TM 45V11		
Power Cable, 12.5' Rubber	TM 40V84R		
Power Cable, 25' Rubber	TM 40V84RL		
Water Hose, 12.5' Rubber	TM 40V83R		
Water Hose, 25' Rubber	TM 40V83RL		
Gas Hose, 12.5' Rubber	TM 40V82R		
Gas Hose, 25' Rubber	TM 40V82RL		
Zipper Cover - 10'	TM CC410		
Zipper Cover - 22'	TM CC422		
Torch Body	TM 12		
Handle	TM 85WP13		
Gasket/Insulator	TM 12NG		
Gasket/Insulator for Gas Line	TM 12GLG		



Series

Product Information & Specs

Part Number

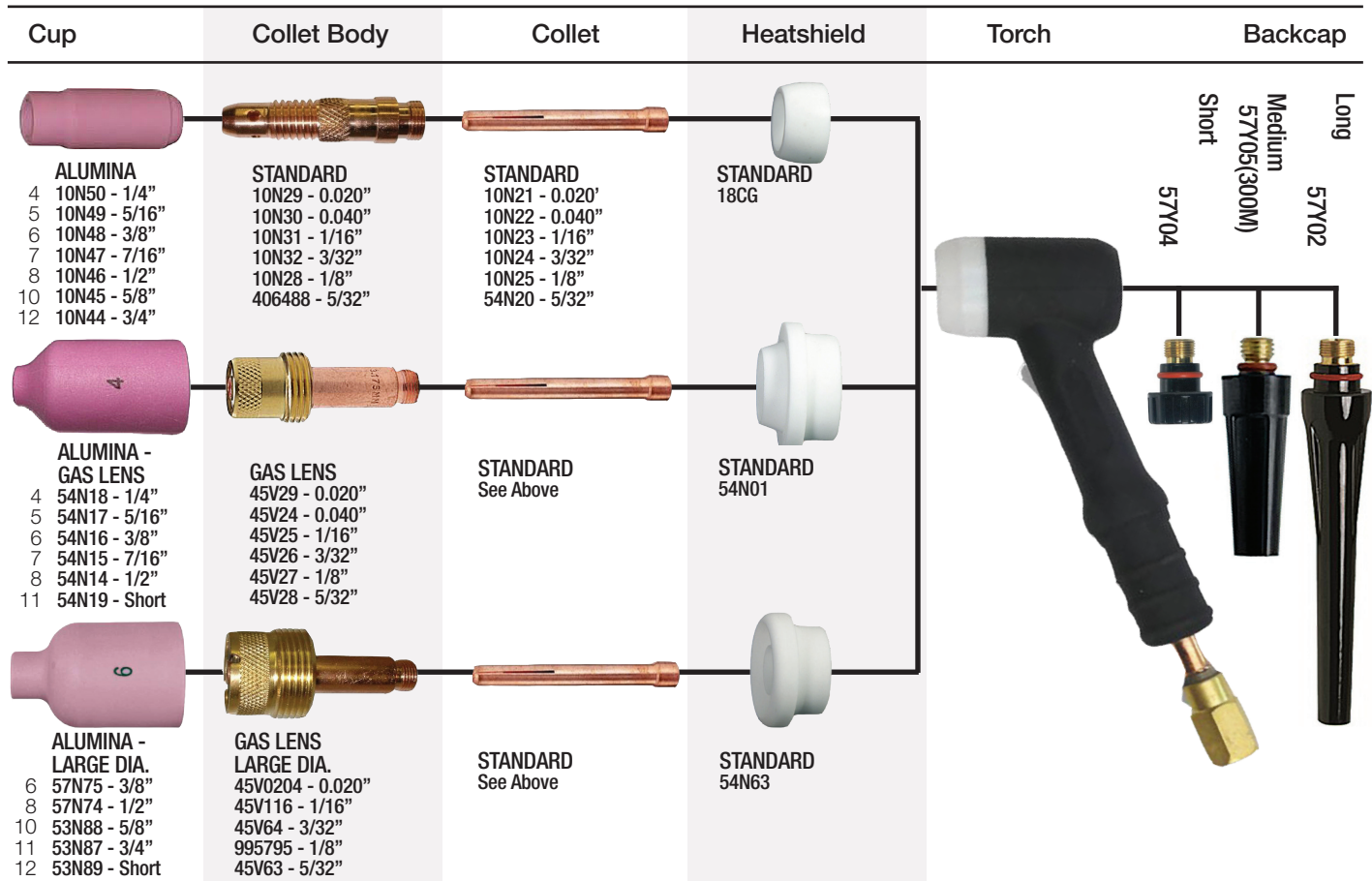
**TM 17 SERIES
150 AMP AIR COOLED**



TIG Torch Pack TM17 150A 12' 2 pc. Cable	MW	17-12-2
TIG Torch Pack TM17 12' Dinse 25 Connector	MW	17-12-2Q
TIG Torch Pack TM17 12' 1 pc. Cable	MW	17-12R
TIG Torch Pack TM17 12' Dinse 25 Connector	MW	17-12RQ
TIG Torch Pack TM17 25' 2 pc. Cable	MW	17-25-2
TIG Torch Pack TM17 25' Dinse 25 Connector	MW	17-25-2Q
TIG Torch Pack TM17 25' 1 pc. Cable	MW	17-25R
TIG Torch Pack TM17 25' Flow Through Dinse	MW	17-25RFT
TIG Torch Pack TM17 25' Dinse 25 Connector	MW	17-25RQ
TIG Torch Pack TM17V 12' 2 pc. Cable	MW	17V-12-2
TIG Torch Pack TM17V 12' Dinse 25 Connector	MW	17V-12-2Q
TIG Torch Pack TM17V 12' 1 pc. Cable	MW	17V-12RQ
TIG Torch Pack TM17V 12' Dinse 25 Connector	MW	17V-25-2
TIG Torch Pack TM17V 25' 2 pc. Cable	MW	17V-25-2
TIG Torch Pack TM17V 25' Dinse 25 Connector	MW	17V-25-2Q
TIG Torch Pack TM17V 25' 1 pc. Cable	MW	17V-25R
TIG Torch Pack TM17V 25' Dinse 25 Connector	MW	17V-25RQ
TIG Torch Pack TM17F 12' 2 pc. Cable	MW	17F-12-2
TIG Torch Pack TM17F 12' Dinse 25 Connector	MW	17F-12-2Q
TIG Torch Pack TM17F 12' 1 pc. Cable	MW	17F-12R
TIG Torch Pack TM17F 12' Dinse 25 Connector	MW	17F-12RQ
TIG Torch Pack TM17F 12' 1 pc. Cable, Saver	MW	17F-12R-S
TIG Torch Pack TM17F 25' 2 pc. Cable	MW	17F-25-2
TIG Torch Pack TM17F 25' Dinse 25 Connector	MW	17F-25-2Q
TIG Torch Pack TM17F 25' 1 pc. Cable	MW	17F-25R
TIG Torch Pack TM17F 25' Flow Through Dinse	MW	17F-25RFT
TIG Torch Pack TM17F 25' Dinse 25 Connector	MW	17F-25RQ
TIG Torch Pack TM17F 25' 1 pc. Cable, Saver	MW	17F-25R-S
TIG Torch Pack TM17FV 12' 2 pc. Cable	MW	17FV-12-2
TIG Torch Pack TM17FV 12' Dinse 25 Connector	MW	17FV-12-2Q
TIG Torch Pack TM17FV 12' 1 pc. Cable	MW	17FV-12R
TIG Torch Pack TM17FV 12' Dinse 25 Connector	MW	17FV-12RQ
TIG Torch Pack TM17FV 12' 1 pc. Cable, Saver	MW	17FV-12R-S
TIG Torch Pack TM17FV 25' 2 pc. Cable	MW	17FV-25-2
TIG Torch Pack TM17FV 25' Dinse 25 Connector	MW	17FV-25-2Q
TIG Torch Pack TM17FV 25' 1 pc. Cable	MW	17FV-25R
TIG Torch Pack TM17FV 25' Dinse 25 Connector	MW	17FV-25RQ
TIG Torch Pack TM17FV 25' 1 pc. Cable, Saver	MW	17FV-25R-S
TIG Torch Pack TM17FV 50' 1 pc. Cable	MW	17FV-50R
Torch Body Solid	TM	17
Torch Body w/ Gas Valve	TM	17V
Torch Body Flexible	TM	17F
Torch Body Flexible w/ Gas Valve	TM	17FV
Handle Ribbed	TM	105Z55R
Handle Smooth	TM	105Z55



For all trade name references, please refer to the last page for further information. Images may vary.



ADDITIONAL NOZZLES, CUPS AND LENSES

LAVA NOZZLE	LONG ALUMINA	LONG OR XL GAS LENS	LONG LAVA NOZZLE	STUBBY ALUMINA	STUBBY COLLET
105Z42 - 5/16"	10N50L - 1/4"	54N17L - 5/16"	12N03 - 1/4"	13N08 - 1/4"	10N22S - 0.040"
105Z43 - 1/4"	10N49L - 5/16"	54N16L - 3/8"	105Z60 - 5/16"	13N09 - 5/16"	10N23S - 1/16"
105Z44 - 3/8"	10N48L - 3/8"	54N15L - 7/16"	12N02 - 3/8"	13N10 - 3/8"	10N24S - 3/32"
105Z45 - 7/16"	10N47L - 7/16"	53N88XL - 5/8"	105Z61 - 7/16"	13N11 - 7/16"	10N25S - 1/8"
08N78 - 1/2"	10N46L - 1/2"	53N87XL - 3/4"		13N12 - 3/32"	
08N79 - 5/8"					STUBBY COL. BODY
08N80 - 3/4"					17CB20 - 0.040-1/8"

ADDITIONAL PARTS

Description	Part Number	Description	Part Number
O'Ring for Back Cap	TM 98W18	Back Cap Gasket	TM 18-7
Gas Valve	TM VS2	Gas Lens Insulator	TM 54N01
Gas Hose Nipple	TM N17-1	Large Diameter Gas Lens Insulator	TM 54N63
Argon Nipple	TM N17-2	Gasket for Stubby Collet Body	TM 18CG20
Power Cable Fitting	TM C17-1	Adaptor 3/8" UNF to 5/8" UNF for TEC25/50	TM PCA2-4
Lug	TM T-62	10-25mm Dinse Connector (1 Piece Cable)	TM TEC25
Argon Nut	TM 136Z08	35-50mm Dinse Connector (1 Piece Cable)	TM TEC50
12'/3.8m Gas Hose (Rubber Vinyl Polymer)	TM 45V09	Connector Dinse Male 10-25mm (2 Piece Cable)	TM CCD11
25'/7.6m Gas Hose (Rubber Vinyl Polymer)	TM 45V10	Connector Dinse Male 35-50mm (2 Piece Cable)	TM CCD21
12'/3.8m Two Piece Power Cable Assembly	TM 57Y01-2	Flow Thru Dinse 10-25mm	TM CCD1FT
25'/7.6m Two Piece Power Cable Assembly	TM 57Y03-2	Flow Thru Dinse 35-50mm	TM CCD2FT
Power Cable Adaptor (1 Piece Cable)	TM 105Z57	Rubber Boot for TEC Connector	TM TECBOOT
Power Cable Fitting (1 Piece Cable)	TM 57Y10	Accessory Kit	TM AK2
12'/3.8m Rubber Power Cable	TM 57Y01R	Wire Ties	TM 53N04
25'/7.6m Rubber Power Cable	TM 57Y03R	Bulk Gas Hose (100'/30.5m)	TM BRT1

Series

Product Information & Specs

Part Number

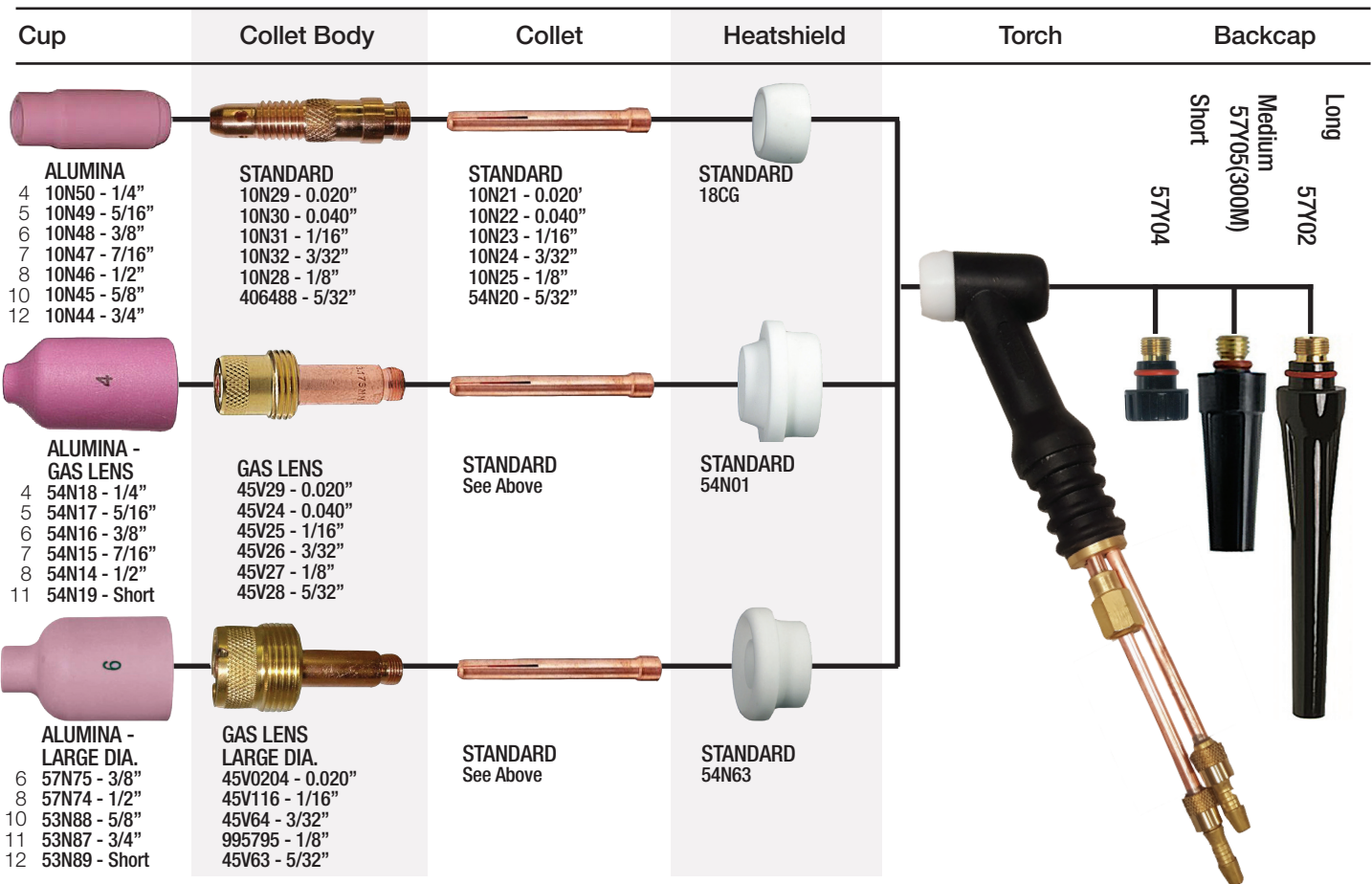
**TM 18 SERIES
350 AMP
WATER COOLED**



TIG Torch Pack TM18 350A 12' Water Cooled	MW	18-12
TIG Torch Pack TM18 12' Rubber Braided	MW	18-12RB
TIG Torch Pack TM18 25'	MW	18-25
TIG Torch Pack TM18 25' 35-50 Dinse	MW	18-25Q
TIG Torch Pack TM18 25' Rubber Braided	MW	18-25RB
TIG Torch Pack TM18 25' Saver	MW	18-25-S
TIG Torch Pack TM18 50'	MW	18-50
TIG Torch Pack TM18V 12'	MW	18V-12
TIG Torch Pack TM18V 25'	MW	18V-25
TIG Torch Pack TM18V 25' Rubber Braided	MW	18V-25RB
TIG Torch Pack TM18F 12'	MW	18F-12
TIG Torch Pack TM18F 25'	MW	18F-25
TIG Torch Pack TM18F 25' Rubber Braided	MW	18F-25RB
TIG Torch Pack TM18FV 12'	MW	18FV-12
TIG Torch Pack TM18FV 12' Rubber Braided	MW	18FV-12RB
TIG Torch Pack TM18FV 25'	MW	18FV-25
TIG Torch Pack TM18 Straight Torch 12' Rubber Braided	MW	18S-12RB
TIG Torch Pack TM 18 Straight Torch 25'	MW	18S-25
TIG Torch Pack TM 18 Straight Torch 25' Rubber Braided	MW	18S-25RB
Torch Body Solid	TM	18
Torch Body w/ Gas Valve	TM	18V
Torch Body Flexible	TM	18F
Torch Body Flexible w/ Gas Valve	TM	18FV
Handle Ribbed	TM	10N15R
Handle Smooth	TM	10N15



For all trade name references, please refer to the last page for further information. Images may vary.

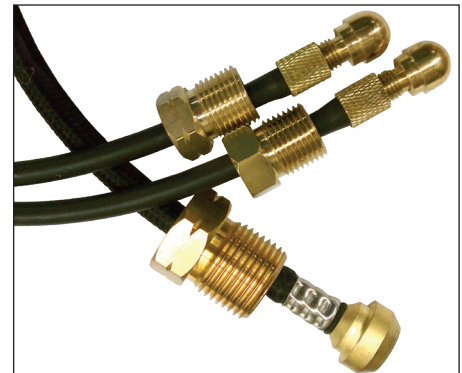


ADDITIONAL NOZZLES, CUPS AND LENSES					
LAVA NOZZLE	LONG ALUMINA	LONG OR XL GAS LENS	LONG LAVA NOZZLE	STUBBY ALUMINA	STUBBY COLLET
105Z42 - 5/16"	10N50L - 1/4"	54N17L - 5/16"	12N03 - 1/4"	13N08 - 1/4"	10N22S - 0.040"
105Z43 - 1/4"	10N49L - 5/16"	54N16L - 3/8"	105Z60 - 5/16"	13N09 - 5/16"	10N23S - 1/16"
105Z44 - 3/8"	10N48L - 3/8"	54N15L - 7/16"	12N02 - 3/8"	13N10 - 3/8"	10N24S - 3/32"
105Z45 - 7/16"	10N47L - 7/16"	53N88XL - 5/8"	105Z61 - 7/16"	13N11 - 7/16"	10N25S - 1/8"
08N78 - 1/2"	10N46L - 1/2"	53N87XL - 3/4"		13N12 - 3/32"	
08N79 - 5/8"					STUBBY COL. BODY
08N80 - 3/4"					17CB20 - 0.040-1/8"

ADDITIONAL PARTS

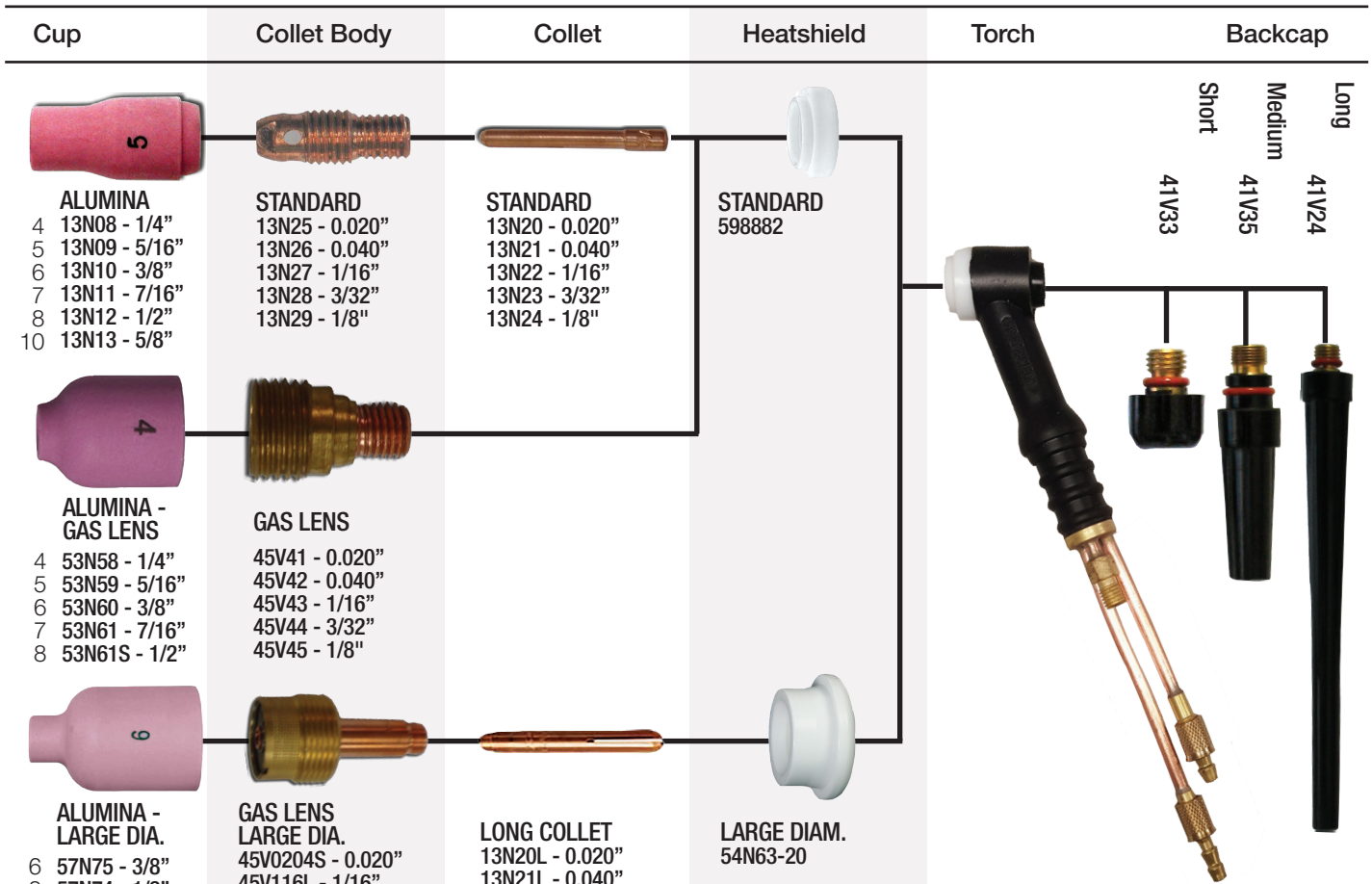
Description	Part Number	Description	Part Number
Power Cable 12'	TM 40V64R	Wire Ties	TM 53N04
Power Cable 25'	TM 41V29R	Hose 3/16" Gas/Water	TM BVT3
Hose Assy Gas 12'	TM 40V75	Hose Rubber Braided	TM BRT2
Hose Assy Gas 12' Rubber Braided	TM 40V75R	Cable Cover 10'	TM CC310
Hose Assy Gas 25'	TM 41V30	Cable Cover 23'	TM CC323
Hose Assy Gas 25' Rubber Braided	TM 41V30R	O'Ring for Back Cap	TM 98W18
Hose Assy Water 12'	TM 40V74	Gas Valve	TM VS2
Hose Assy Water 12' Rubber Braided	TM 40V74R	Insulator	TM 54N01
Hose Assy Water 25'	TM 41V32	Insulator - Large	TM 54N63
Hose Assy Water 25' Rubber Braided	TM 41V32R	10-25mm Dinse Connector	TM TEC25W
Gas Nut	TM 136Z08	35-50mm Dinse	TM TEC50W
Water Nut	TM 11N83	Accessory Kit	TM AK3
Compression Nipple	TM 53N10	Power Adaptor	TM 45V11

Series	Product Information & Specs	Part Number
TM 20 SERIES 250 AMP WATER COOLED	TIG Torch Pack TM20 250A 12' Water Cooled	MW 20-12
	TIG Torch Pack TM20 12' Rubber Braided	MW 20-12RB
	TIG Torch Pack TM20 25'	MW 20-25
	TIG Torch Pack TM20 25' Rubber Braided	MW 20-25RB
	TIG Torch Pack TM20 25' Saver	MW 20-25-S
	TIG Torch Pack TM20 50'	MW 20-50
	TIG Torch Pack TM20 50' Rubber Braided	MW 20-50RB
	TIG Torch Pack TM20V 12'	MW 20V-12
	TIG Torch Pack TM20V 12' Rubber Braided	MW 20V-12RB
	TIG Torch Pack TM20V 25'	MW 20V-25
	TIG Torch Pack TM20V 25' Rubber Braided	MW 20V-25RB
	TIG Torch Pack TM20F 12'	MW 20F-12
	TIG Torch Pack TM20F 12' Rubber Braided	MW 20F--12
	TIG Torch Pack TM20F 25'	MW 20F-25
	TIG Torch Pack TM20F 25' Rubber Braided	MW 20F-25RB
	TIG Torch Pack TM20FV 12'	MW 20FV-12
	TIG Torch Pack TM20FV 12' Rubber Braided	MW 20FV-12RB
	TIG Torch Pack TM20FV 25'	MW 20FB-25
	TIG Torch Pack TM20FB 25' Rubber Braided	MW 20FV-25RB
	Torch Body Solid	TM 20
	Torch Body w/ Gas Valve	TM 20V
	Torch Body Flexible	TM 20F
	Torch Body Flexible w/ Gas Valve	TM 20FV
	Torch Body Straight	TM 20S
	Handle Ribbed	TM 53N06R
	Handle Smooth	TM 53N06



All 20 Torches are built with mechanical fittings for both Gas and Water Hoses.

For all trade name references, please refer to the last page for further information. Images may vary.



ADDITIONAL NOZZLES, CUPS AND LENSES		
LAVA NOZZLE	LONG LAVA NOZZLE	EXTRA LONG LAVA
13N14 - 1/4"	796F70 - 3/16"	796F64 - 3/16"
13N15 - 5/16"	796F71 - 1/4"	796F75 - 1/4"
13N16 - 3/8"	796F72 - 5/16"	796F76 - 5/16"
13N17 - 7/16"	796F73 - 5/8"	796F77 - 3/8"
13N18 - 1/2"		
13N19 - 5/8"		

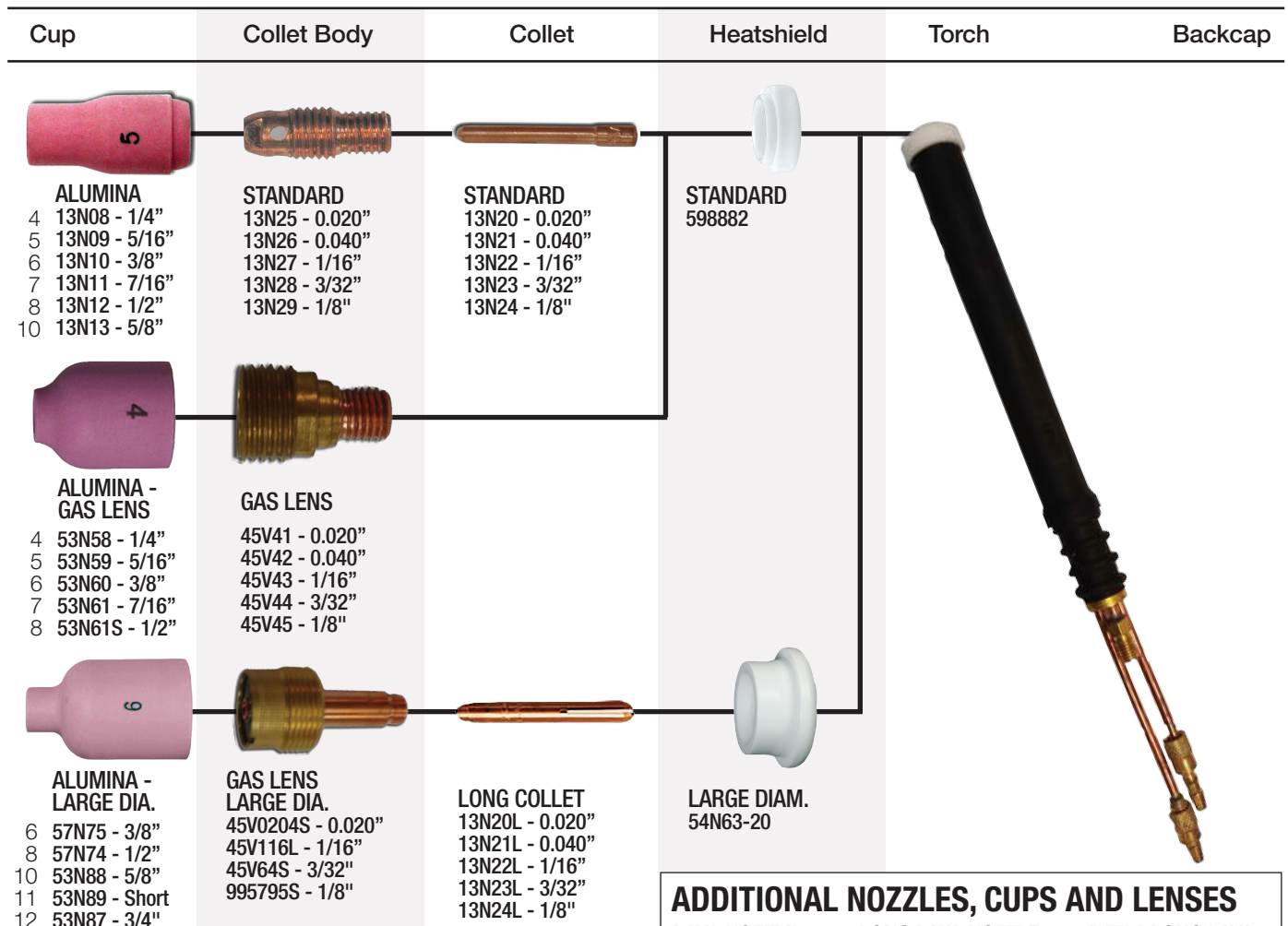
ADDITIONAL PARTS

Description	Part Number	Description	Part Number
Power Cable Assy 12' Rubber	TM 45V03	Wire Ties	TM 53N04
Power Cable Assy 12' Rubber Braided	TM 45V03R	Hose 1/8" Water/Gas Rubber Vinyl Polymer	TM BVT1
Power Cable Assy 25' Rubber	TM 45V04	Hose Rubber Braided	TM BRT1
Power Cable Assy 25' Rubber Braided	TM 45V04R	Cable Cover 10'	TM CC310
Hose Assy Water 12'	TM 45V07	Cable Cover 23'	TM CC323
Hose Assy Water 12' Rubber Braided	TM 45V07R	O'Ring For Back Cap	TM 98W77
Hose Assy Water 25'	TM 45V08	Gas Valve	TM VS2
Hose Assy Water 25' Rubber Braided	TM 45V08R	10-25mm Dinse Connector Water Hose	TM TEC25W
Hose Assy Gas 12'	TM 45V09	35-50mm Dinse Connector Water Hose	TM TEC50W
Hose Assy Gas 12' Rubber Braided	TM 45V09R	Accessory Kit	TM AK4
Hose Assy Gas 25'	TM 45V10	Power Cable Adapter	TM 45V11
Hose Assy Gas 25' Rubber Braided	TM 45V10R		
Gas Nut	TM 136Z08		
Water Nut	TM 11N83		
Compression Nipple	TM 53N10		

Series	Product Information & Specs	Part Number
TM 25 SERIES 250 AMP WATER COOLED	TIG Torch Pack TM20 250A 12' Water Cooled	MW 25-12
	TIG Torch Pack TM20 250A 12' Water Cooled Rubber Braided	MW 25-12RB
	TIG Torch Pack TM20 250A 25' Water Cooled Rubber Braided	MW 25-15RB
	TIG Torch Pack TM20 25'	25-25
	TIG Torch Pack TM20 250A 25' Water Cooled Rubber Braided	MW 25-25RB
	Torch Body Solid	TM 25
	Handle Smooth	TM 53N06



For all trade name references, please refer to the last page for further information.
Images may vary.



ADDITIONAL NOZZLES, CUPS AND LENSES		
LAVA NOZZLE	LONG LAVA NOZZLE	EXTRA LONG LAVA
13N14 - 1/4"	796F70 - 3/16"	796F64 - 3/16"
13N15 - 5/16"	796F71 - 1/4"	796F75 - 1/4"
13N16 - 3/8"	796F72 - 5/16"	796F76 - 5/16"
13N17 - 7/16"	796F73 - 5/8"	796F77 - 3/8"
13N18 - 1/2"		
13N19 - 5/8"		

ADDITIONAL PARTS

Description	Part Number	Description	Part Number
Power Cable Assy 12' Rubber	TM 45V03	Wire Ties	TM 53N04
Power Cable Assy 12' Rubber Braided	TM 45V03R	Hose 1/8" Water/Gas Rubber Vinyl Polymer	TM BVT1
Power Cable Assy 25' Rubber	TM 45V04	Hose Rubber Braided	TM BRT1
Power Cable Assy 25' Rubber Braided	TM 45V04R	Cable Cover 10'	TM CC310
Hose Assy Water 12'	TM 45V07	Cable Cover 23'	TM CC323
Hose Assy Water 12' Rubber Braided	TM 45V07R	O'Ring For Back Cap	TM 98W77
Hose Assy Water 25'	TM 45V08	Gas Valve	TM VS2
Hose Assy Water 25' Rubber Braided	TM 45V08R	10-25mm Dinse Connector Water Hose	TM TEC25W
Hose Assy Gas 12'	TM 45V09	35-50mm Dinse Connector Water Hose	TM TEC50W
Hose Assy Gas 12' Rubber Braided	TM 45V09R	Accessory Kit	TM AK4
Hose Assy Gas 25'	TM 45V10	Power Cable Adapter	TM 45V11
Hose Assy Gas 25' Rubber Braided	TM 45V10R		
Gas Nut	TM 136Z08		
Water Nut	TM 11N83		
Compression Nipple	TM 53N10		

Series

Product Information & Specs

Part Number

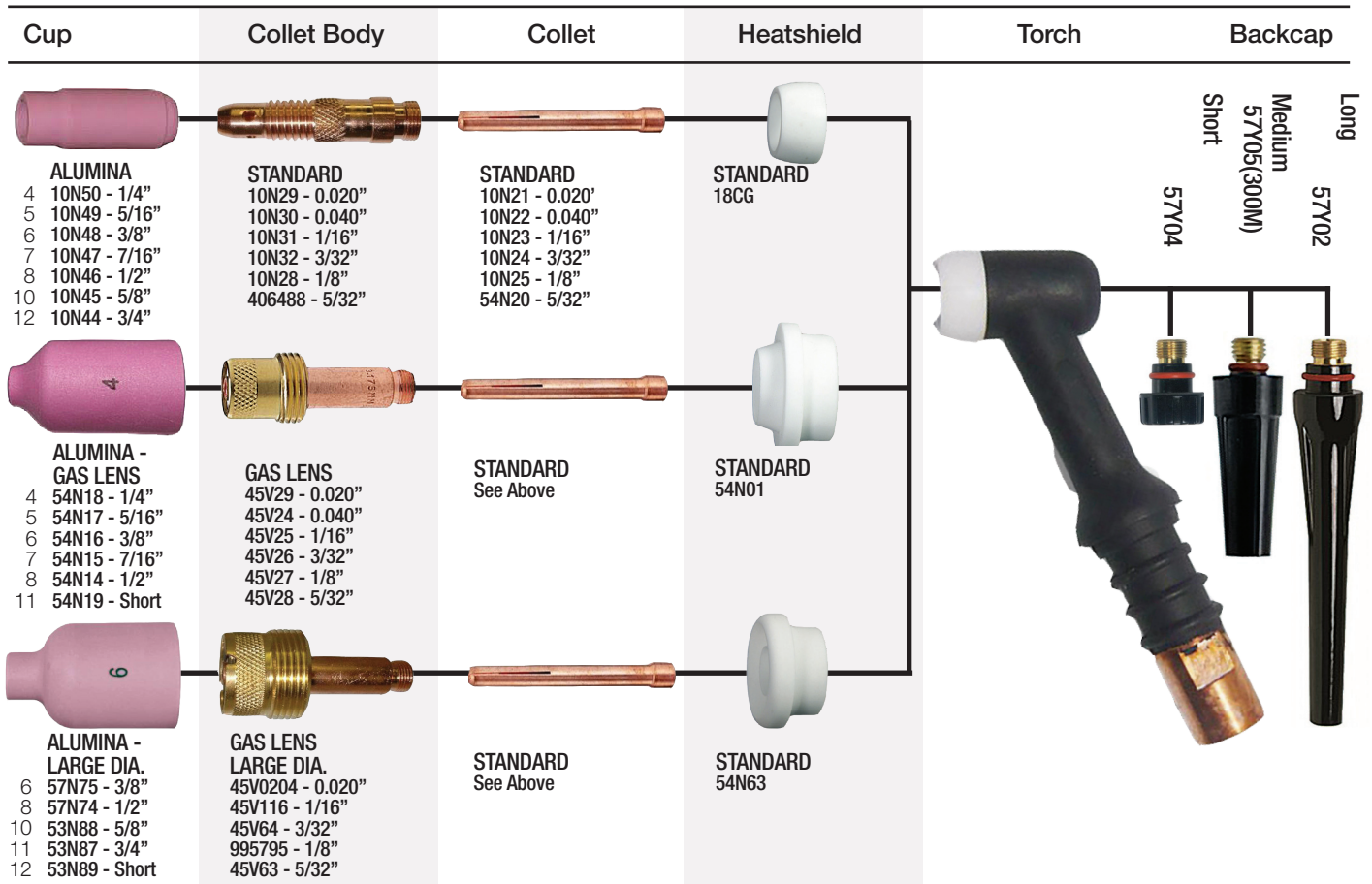
**TM 26 SERIES
200 AMP AIR COOLED**



TIG Torch Pack TM26 200 Amp 12' 2 pc. Cable	MW	26-12
TIG Torch Pack TM26 12' Dinse 25 Connector	MW	26-12Q
TIG Torch Pack TM26 12' 1 pc. Cable	MW	26-12R
TIG Torch Pack TM26 12' Dinse 50 Connector	MW	26-12RQ
TIG Torch Pack TM26 25' 2 pc. Cable	MW	26-25-2
TIG Torch Pack TM26 25' Dinse 25 Connector	MW	26-25-2Q
TIG Torch Pack TM26 25' 1 pc. Cable	MW	26-25R
TIG Torch Pack TM26 25' Dinse 50 Connector	MW	26-25RQ
TIG Torch Pack TM26V 12' 2 pc. Cable	MW	26V-12-2
TIG Torch Pack TM26V 12' Dinse 50 Connector	MW	26V-12-2Q
TIG Torch Pack TM26V 12' 1 pc. Cable	MW	26V-12R
TIG Torch Pack TM26V 12' Dinse 50 Connector	MW	26V-12RQ
TIG Torch Pack TM26V 25' 2 pc. Cable	MW	26V-25-2
TIG Torch Pack TM26V 25' Dinse 50 Connector	MW	26V-25-2Q
TIG Torch Pack TM26V 25' 1 pc. Cable	MW	26V-25R
TIG Torch Pack TM26V 25' Dinse 50 Connector	MW	26V-25RQ
TIG Torch Pack TM26S 12' 1 pc. Cable	MW	26S-12R
TIG Torch Pack TM26F 12' 2 pc. Cable	MW	26F-12-2
TIG Torch Pack TM26F 12' Dinse 50 Connector	MW	26F-12-2Q
TIG Torch Pack TM26F 12' 1 pc. Cable	MW	26F-12R
TIG Torch Pack TM26F 12' Dinse 50 Connector	MW	26F-12RQ
TIG Torch Pack TM26F 25' 2 pc. Cable	MW	26F-25-2
TIG Torch Pack TM26F 25' Dinse 50 Connector	MW	26F-25-2Q
TIG Torch Pack TM26F 25' 1 pc. Cable	MW	26F-25R
TIG Torch Pack TM26F 25' Dinse 50 Connector	MW	26F-25RQ
TIG Torch Pack TM26FV 12' 2 pc. Cable	MW	26FV-12-2
TIG Torch Pack TM26FV 12' Dinse 50 Connector	MW	26FV-12-2Q
TIG Torch Pack TM26FV 12' 1 pc. Cable	MW	26-12R
TIG Torch Pack TM26FV 12' Dinse 50 Connector	MW	26-12RQ
TIG Torch Pack TM26FV 12' Saver	MW	26-12R-S
TIG Torch Pack TM26FV 25' 2 pc. Cable	MW	26-25-2
TIG Torch Pack TM26FV 25' Dinse 50 Connector	MW	26-25-2Q
TIG Torch Pack TM26FV 25' 1 pc. Cable	MW	26-25R
TIG Torch Pack TM26FV 25' Dinse 50 Connector	MW	26-25RQ
TIG Torch Pack TM26FV 25' Saver	MW	26-25R-S
Torch Body Solid	TM	26
Torch Body w/ Gas Valve	TM	26V
Torch Body Flexible	TM	26F
Torch Body Flexible w/ Gas Valve	TM	26FV
Handle Ribbed	TM	10N15R
Handle Smooth	TM	10N15



For all trade name references, please refer to the last page for further information.
Images may vary.



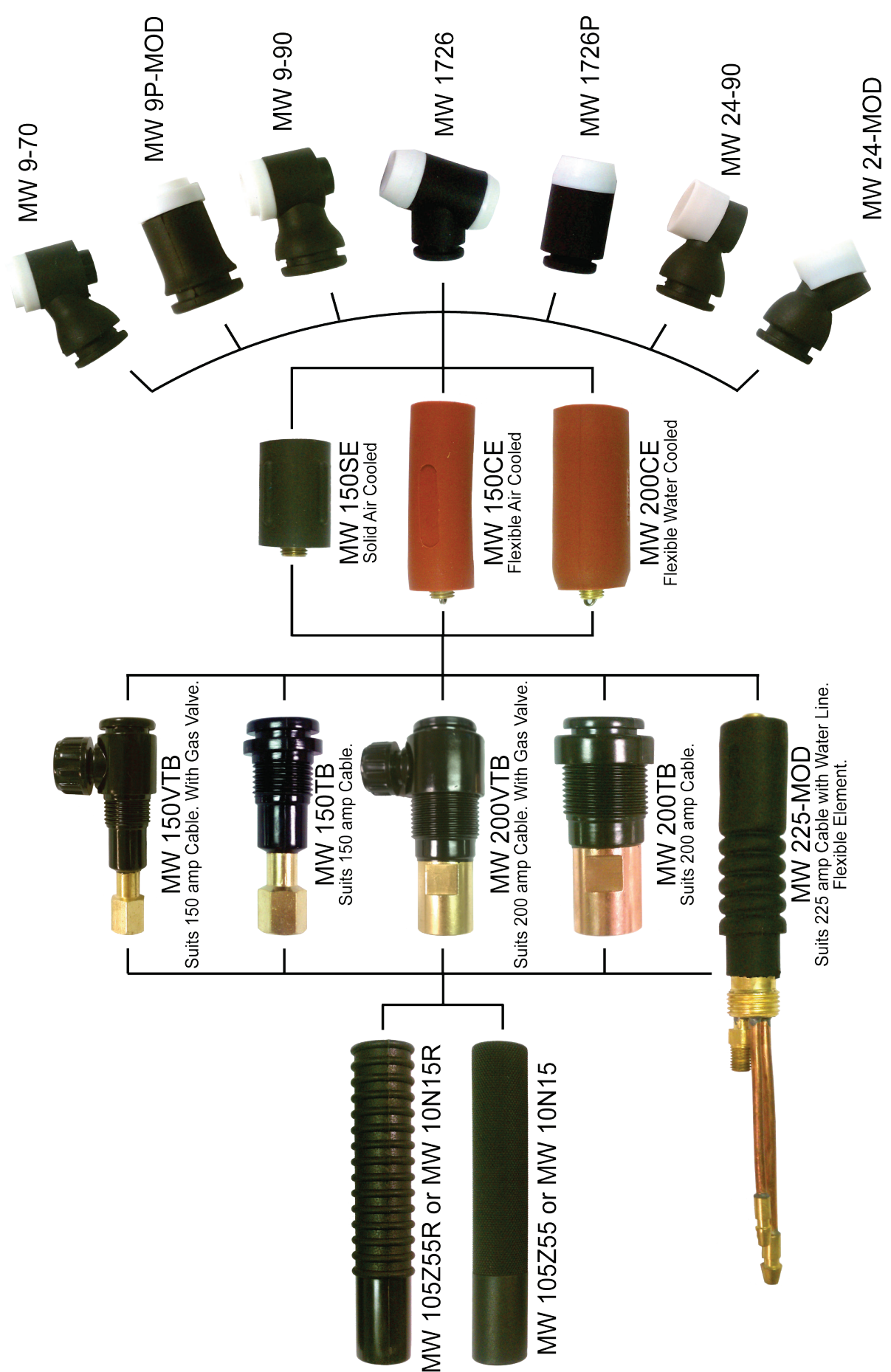
ADDITIONAL NOZZLES, CUPS AND LENSES

LAVA NOZZLE	LONG ALUMINA	LONG OR XL GAS LENS	LONG LAVA NOZZLE	STUBBY ALUMINA	STUBBY COLLET
105Z42 - 5/16"	10N50L - 1/4"	54N17L - 5/16"	12N03 - 1/4"	13N08 - 1/4"	10N22S - 0.040"
105Z43 - 1/4"	10N49L - 5/16"	54N16L - 3/8"	105Z60 - 5/16"	13N09 - 5/16"	10N23S - 1/16"
105Z44 - 3/8"	10N48L - 3/8"	54N15L - 7/16"	12N02 - 3/8"	13N10 - 3/8"	10N24S - 3/32"
105Z45 - 7/16"	10N47L - 7/16"	53N88XL - 5/8"	105Z61 - 7/16"	13N11 - 7/16"	10N25S - 1/8"
08N78 - 1/2"	10N46L - 1/2"	53N87XL - 3/4"		13N12 - 3/32"	
08N79 - 5/8"					STUBBY COL. BODY
08N80 - 3/4"					17CB20 - 0.040-1/8"

ADDITIONAL PARTS

Description	Part Number	Description	Part Number
O'Ring for Gas Valve	TM S008	Power Cable Fitting	TM C26-1
Gas Valve	TM VS1	Power Cable Fitting - Torch	TM 45V67
O'Ring for Back Cap	TM 98W18	Power Cable Fitting - Machine	TM 57410
12'/3.8m Rubber Power Cable - 2 Piece	TM 46V28-2	Back Cap Insulator	TM 18-7
25'/7.6m Rubber Power Cable - 2 Piece	TM 45V30-2	Gas Lens Insulator	TM 54N01
Nipple	TM N26-1	Large Diameter Gas Lens Insulator	TM 54N63
Lug	TM T-62	Adapter for TEC50	TM TEC50AD26
Argon Nipple	TM 53N10	10-25mm Dinse Connector	TM TEC25
Argon Nut	TM 136Z08	35-50mm Dinse Connector	TM TEC50
12'/3.8m Gas Hose Rubber Vinyl Polymer	TM 40V75	Connector Dinse Male 10-25mm (2 Piece Cable)	TM CCD11
25'/7.6m Gas Hose Rubber Vinyl Polymer	TM 41V30	Connector Dinse Male 35-50mm (2 Piece Cable)	TM CCD21
Power Cable Adapter	TM 45V62	Flow Thru Dinse 10-25mm	TM CCD1FT
Power Nut	TM 48N22	Flow Thru Dinse 35-50mm	TM CCD2FT
Brass Ferrule	TM F7327	Accessory Kit	TM AK3
12'/3.8m Rubber 2 Piece Power Cable	TM 45V28R	Wire Ties	TM 53N04
25'/7.6m Rubber 2 Piece Power Cable	TM 46V30R	Bulk Gas Hose (100'/30.5m Lengths)	TM BVT3

MODULAR TIG TORCHES INTERCHANGEABLE WITH LINDE/WELDCRAFT TORCHES





MASTER ACCESSORY KITS

MAK-1S - Suitable for TM 9, 20

- (10) 53N04 Wire Ties
- (4) 98W77 O'Rings for Back Cap
- (1) 41V33 Short Back Cap
- (2) 41V35 Medium Back Cap
- (1) 41V24 Long Back Cap
- (1) 598882 Gasket Cup

	.040	1/16	3/32	1/8
COLLET	(2) 13N21	(4) 13N22	(4) 13N23	(2) 13N24
COLLET BODY	(1) 13N26	(2) 13N27	(2) 13N28	(2) 13N29
GAS LENS	(1) 45V42	(1) 45V43	(1) 45V44	(1) 45V45



MAK-2S - Suitable for TM 17, 18, 26

- (4) 98W18 O'Rings for Back Cap
- (1) 57Y04 Short Back Cap
- (1) 57Y02 Long Back Cap
- (2) 18CG Gasket Cap
- (1) 54N01 Gasket Gas Lens Cup

	.040	1/16	3/32	1/8	5/32
COLLET	(1) 10N22	(3) 10N23	(3) 10N24	(2) 10N25	(1) 54N20
COLLET BODY	(1) 10N30	(2) 10N31	(2) 10N32	(2) 10N28	(1) 406488
GAS LENS	(1) 45V24	(1) 45V25	(1) 45V25	(1) 45V27	-



For all trade name references, please refer to the last page for further information. Images may vary.



Tungsten Electrodes

Product Information & Specs	Quantity	Part Number
1.5% LANTHANATED- GOLD EWLa - 1.5 - AWS A5.12	.040 X 7" 10 pc. - Pack	07WL15040
	1/16 X 7" 10 pc. - Pack	07WL15062
	3/32 X 7" 10 pc. - Pack	07WL15093
	1/8 X 7" 10 pc. - Pack	07WL15125
	5/32 X 7" 10 pc. - Pack	07WL15156
	.040 X 7" 3 pc. - Pack	MWP307WL15040
	1/16 X 7" 3 pc. - Pack	MWP307WL15062
	3/32 X 7" 3 pc. - Pack	MWP307WL15093
	1/8 X 7" 3 pc. - Pack	MWP307WL15125
	2% LANTHANATED - BLUE EWLa - 2 - AWS A5.12	1/16 X 7" 10 pc. - Pack
3/32 X 7" 10 pc. - Pack		07WL2093
1/8 X 7" 10 pc. - Pack		07WL2125
1/16 X 7" 3 pc. - Pack		MWP307WL2062
3/32 X 7" 3 pc. - Pack		MWP307WL2093
1/8 X 7" 3 pc. - Pack		MWP307WL2125
2% THORIATED - RED EWTh-2 - AWS A5.12	.020 X 7" 10 pc. - Pack	07WTH2020
	.040 X 7" 10 pc. - Pack	07WTH2040
	1/16 X 7" 10 pc. - Pack	07WTH2062
	3/32 X 7" 10 pc. - Pack	07WTH2093
	1/8 X 7" 10 pc. - Pack	07WTH2125
	5/32 X 7" 10 pc. - Pack	07WTH2156
	3/16 X 7" 10 pc. - Pack	07WTH2187
	1/4 X 7" 10 pc. - Pack	07WTH2250
	.020 X 7" 3 pc. - Pack	MWP307WTH2020
	.040 X 7" 3 pc. - Pack	MWP307WTH2040
	1/16 X 7" 3 pc. - Pack	MWP307WTH2062
	3/32 X 7" 3 pc. - Pack	MWP307WTH2093
	1/8 X 7" 3 pc. - Pack	MWP307WTH2125
	.020 X 3" 10 pc. - Pack	03WTH2020
	.040 X 3" 10 pc. - Pack	03WTH2040
	1/16 X 7" 10 pc. - Pack	03WTH2062
	3/32 X 3" 10 pc. - Pack	03WTH2093
	1/8 X 3" 10 pc. - Pack	03WTH2125
5/32 X 3" 10 pc. - Pack	03WTH2156	
3/16 X 3" 10 pc. - Pack	03WTH2187	

For all trade name references, please refer to the last page for further information.
Images may vary.

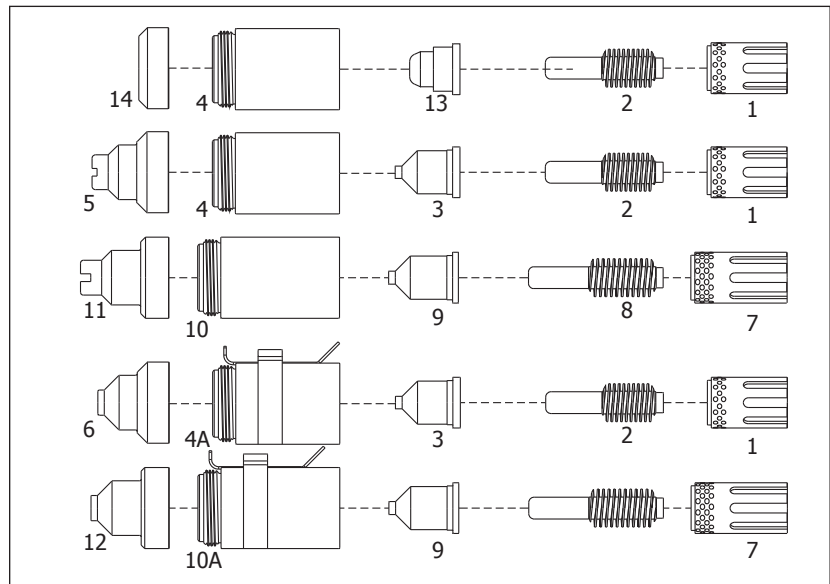
Tungsten Electrodes

Product Information & Specs	Quantity	Part Number	
2% CERATED - ORANGE OR GRAY EWCe-2 - AWS A5.12	.020 X 7" 10 pc. - Pack	07WC020	
	.040 X 7" 10 pc. - Pack	07WC040	
	1/16 X 7" 10 pc. - Pack	07WC062	
	3/32 X 7" 10 pc. - Pack	07WC093	
	1/8 X 7" 10 pc. - Pack	07WC125	
	5/32 X 7" 10 pc. - Pack	07WC156	
	3/16 X 7" 10 pc. - Pack	07WC187	
	1/4 X 7" 10 pc. - Pack	07WC250	
	.020 X 7" 3 pc. - Pack	MWP307WC020	
	.040 X 7" 3 pc. - Pack	MWP307WC040	
	1/16 X 7" 3 pc. - Pack	MWP307WC062	
	3/32 X 7" 3 pc. - Pack	MWP307WC093	
	1/8 X 7" 3 pc. - Pack	MWP307WC125	
	PURE - GREEN EWP - AWS A5.12	.040 X 7" 10 pc. - Pack	07WP040
1/16 X 7" 10 pc. - Pack		07WP062	
3/32 X 7" 10 pc. - Pack		07WP093	
1/8 X 7" 10 pc. - Pack		078WP236	
5/32 X 7" 10 pc. - Pack		07WP156	
3/16 X 7" 10 pc. - Pack		07WP187	
1/4 X 7" 10 pc. - Pack		07WP250	
.020 X 7" 3 pc. - Pack		MWP307WP020	
.040 X 7" 3 pc. - Pack		MWP307WP040	
1/16 X 7" 3 pc. - Pack		MWP307WP062	
3/32 X 7" 3 pc. - Pack		MWP307WP093	
1/8 X 7" 3 pc. - Pack		MWP307WP125	
ZIRCONIATED - BROWN EWZr-1 - AWS A5.12		.020 X 7" 10 pc. - Pack	07WZ020
		.040 X 7" 10 pc. - Pack	07WZ040
	1/16 X 7" 10 pc. - Pack	07WZ062	
	3/32 X 7" 10 pc. - Pack	07WZ093	
	1/8 X 7" 10 pc. - Pack	07WZ125	
	5/32 X 7" 10 pc. - Pack	07WZ156	
	3/16 X 7" 10 pc. - Pack	07WZ187	
	RARE EARTH - SKY BLUE EWZr-1 - AWS A5.12	.040 X 7" 10 pc. - Pack	07WR040
		1/16 X 7" 10 pc. - Pack	07WR062
		3/32 X 7" 10 pc. - Pack	07WR093
1/8 X 7" 10 pc. - Pack		07WR125	
5/32 X 7" 10 pc. - Pack		07WR156	
3/16 X 7" 10 pc. - Pack		07WR187	
.040 x 7" 3 pc. - Pack		MWP307WR040	
1/16 X 7" 3 pc. - Pack		MWP307WR062	
3/32 X 7" 3 pc. - Pack		MWP307WR093	
1/8 X 7" 3 pc. - Pack		MWP307WR125	
5/32" x 7" 3 pc. - Pack	MWP307WR156		
3/16" x 7" 3 pc. - Pack	MWP307WR187		

For all trade name references, please refer to the last page for further information.
Images may vary.

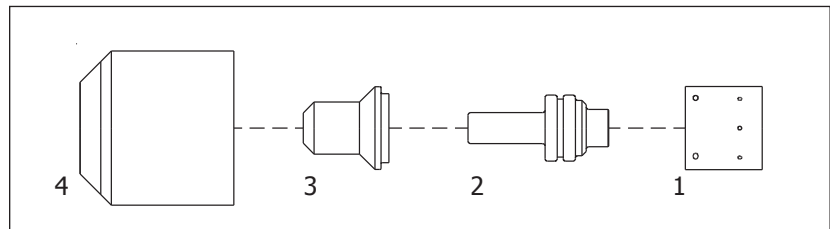
Hypertherm Style Plasma Consumables

Models	Product Information & Specs	Part Number
Powermax 1000 T60/T60M Powermax 1250 T80/T80M Powermax 1650 T100/T100M Powermax 1100 RT80/RT80M RT60/RT60M	1 Swirl Ring 40-80A	MW 120925
	2 Electrode 40-80A	MW 120926
	3 Tip 40A Shielded	MW 120932
	Tip 60A Shielded	MW 120931
	Tip 80A Shielded	MW 120927
	4 Retaining Cap 40-80A	MW 120928
	4A Retaining Cap 40-80A OHMIC	MW 220061
	5 Hand Shielded 40-80	MW 120929
	6 Machine Shielded 40-80A	MW 120930
	7 Swirl Ring 100A	MW 120925
	8 Electrode 100A	MW 120926
	9 Nozzle 100S Shielded	MW 120932
	10 Retaining Cap 100A	MW 120931
	10A Retaining Cap 100A OHMIC	MW 120927
11 Hand Shield 100A	MW 120928	
12 Machine Shield 100A	MW 220061	
13 Nozzle 30-50A Precision Cut	MW 120929	
14 Deflector	MW 120930	



Max 20 Pac 110

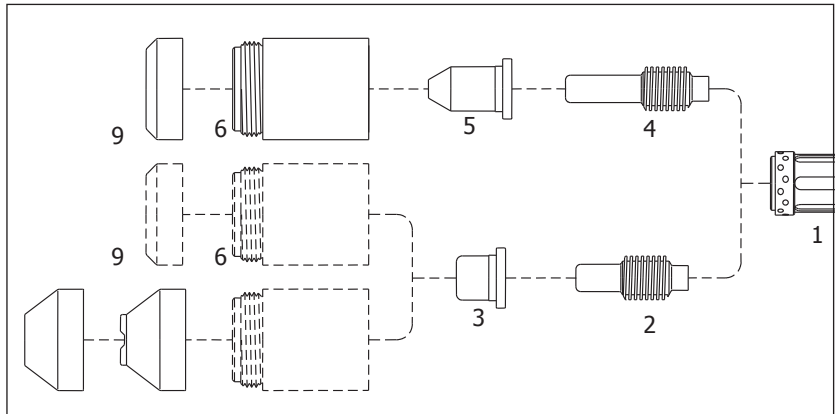
1 Swirl Ring	MW 020239
2 Extended Electrode	MW 020382
3 Extended Nozzle	MW 020381
4 Retaining Cap	MW 020218



For all trade name references, please refer to the last page for further information.
Images may vary.

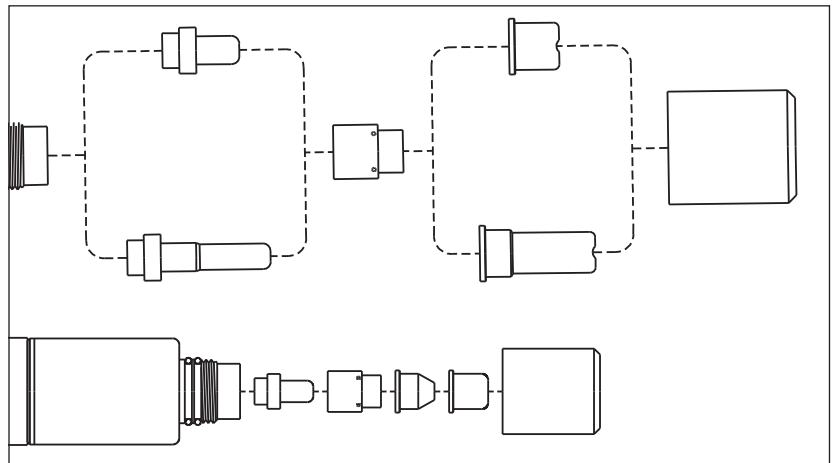
Hypertherm Style Plasma Consumables

Models	Product Information & Specs	Part Number
Powermax 900 PAC125T/M	1 Swirl Ring	MW 120576
	2 Electrode	MW 120573
	3 Nozzle 55A Shielded	MW 120577
	4 Extended Electrode	MW 120574
	5 Nozzle 35A Extended	MW 120606
	Nozzle 55A Extended Pipe Saddle	MW 120578
	6 Retaining Cap	MW 120600
	7 Hand Shield	MW 120601
	8 Machine Shield	MW 120602
9 Deflector	120303	



Max 40 PAC140 HT40

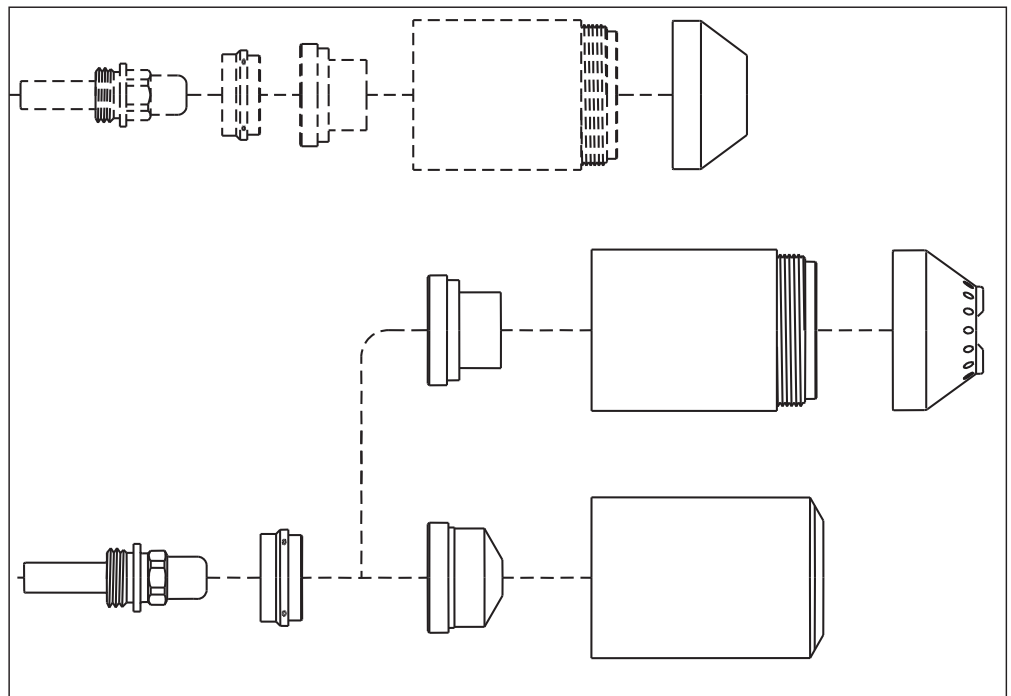
1 Electrode	MW 020103
2 Swirl Ring	MW 020101
3 Nozzle, Hand Torch	MW 020115
4 Pipe Saddle Tip, Machine Torch	MW 020131
5 Nozzle, Machine Torch	MW 020102
6 Retaining Cap	MW 020104
7 Extended Electrode	MW 020467
8 Extended Nozzle	MW 020466



For all trade name references, please refer to the last page for further information.
Images may vary.

Hypertherm Style Plasma Consumables

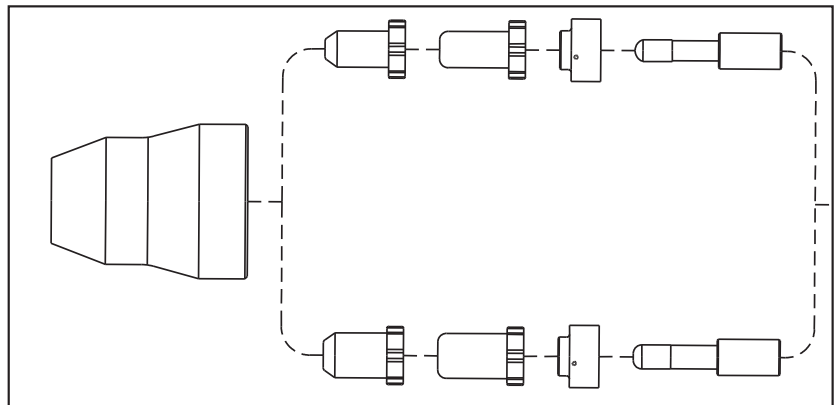
Models	Product Information & Specs	Part Number
Max 80/100 PAC130	1 Electrode	MW 120433
	2 Swirl Ring	MW 020194
	3 Nozzle 40A	MW 020203
	Nozzle 80A	MW 020345
	Nozzle 100A	MW 020195
	4 Retaining Cap	MW 020184
	5 Contact Tip 80A	MW 020397
	Contact Tip 100A	MW 020337
6 Contact Retaining Cap Max Life	MW 020336	
7 Spacer, Hand Contact Cutting	MW 020335	
8 Machine Shield Cap	MW 020334	



For all trade name references, please refer to the last page for further information.
Images may vary.

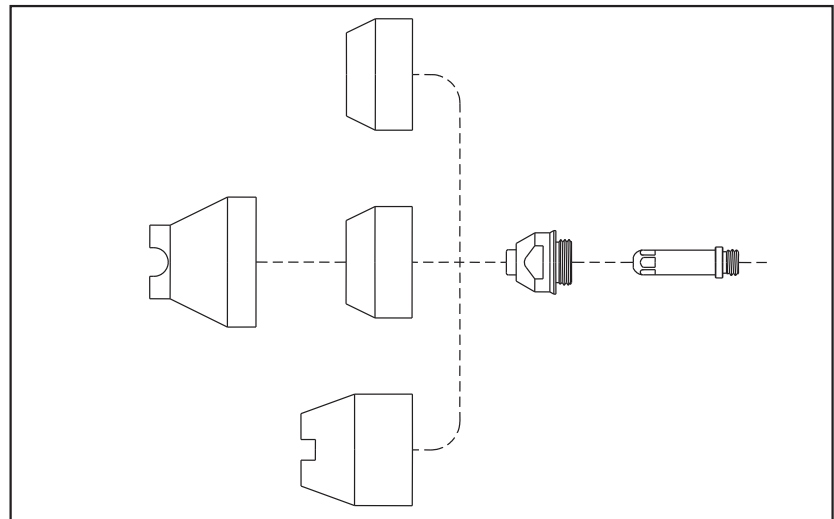
Thermal Dynamics Style Plasma Consumables

Models	Product Information & Specs	Part Number
PCH-25/26/28/38 PCH/M-35/40	1 Electrode	MW 9-6006
	2 Gas Distributor	MW 9-6007
	3 Tip 35A Air	MW 9-6000
	Tip Gouging Groove Air	MW 9-6002
	4 Tip Drag Cut Air	MW 9-6001
	5 Tip Air	MW 9-4476
	6 Electrode Long Life	MW 9-6506
	7 Gas Distributor Long Life	MW 9-6507
	8 Tip-Standoff Long Life	MW 9-6500
9 Tip-Drag Long Life Shield Cap	MW 9-6501 MW 9-6003	



PCH/M-51

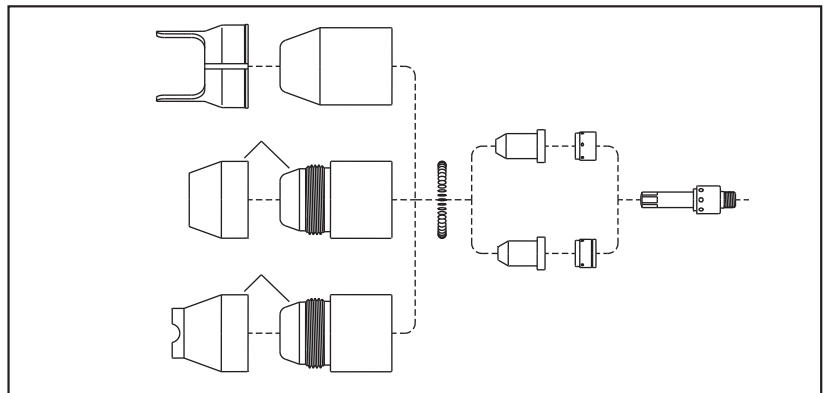
1 Electrode	MW 9-5366
2 Tip 10/40A	MW 9-5718
Tip 10/60A	MW 9-5631
Tip 65A	MW 9-3321
Tip, Gouging	MW 9-5724
3 Shield Cap, Ceramic	MW 9-5630
4 Shield Cap, Phenolic Std.	MW 8-2159
5 Shield Cap Crown, Ceramic	MW 8-5526
6 Shield Cap Crown	MW 9-5779t



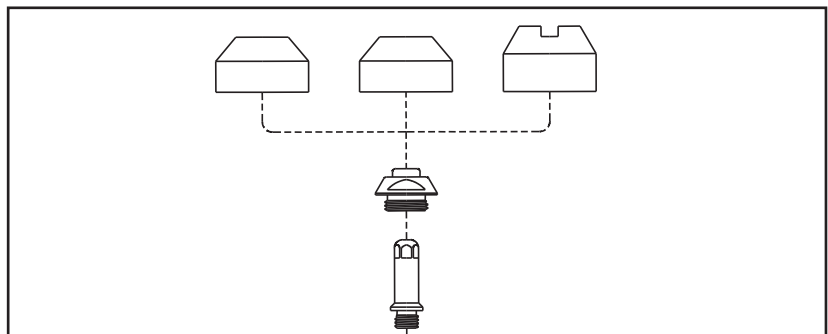
For all trade name references, please refer to the last page for further information.
Images may vary.

Thermal Dynamics Style Plasma Consumables

Models	Product Information & Specs	Part Number
PCH/M-60/75/76/80	1 Electrode	MW 8-7502
	2 Gas Distributor	MW 8-7501
	3 Tip 35A	MW 8-7503
	Tip 55A	MW 8-7504
	Tip 60A	MW 9-7726
	Tip 70A	MW 8-7505
	Tip 80A	MW 9-7728
	4 Gas Distributor Gouging	MW 8-7508
	5 Tip Gouging	MW 8-7506
	6 Coil Spring	MW 9-7501E
	7 Shield Cap	MW 8-7500
	8 Double Pointed Spacer	MW 8-7575
	9 Shield Cap Max Life	MW 8-7496
10 Shield Cap Body	MW 8-7498	
11 Heat Shield (Copper)	MW 8-7497	
12 Crown Shield Cap Assy	MW 8-7507	
13 Crown Shield Cap Copper	MW 8-7499	



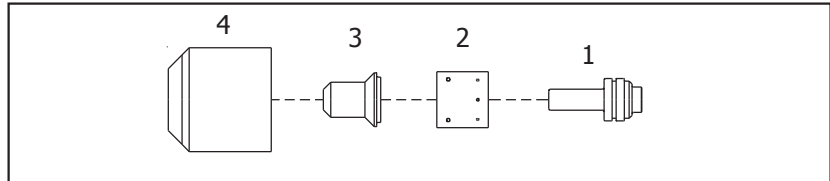
PCH/M-60/75/76/80	1 Electrode Air	MW 8-3331
	Electrode Air Plated	MW 9-5619
	2 Tip 35A	MW 9-5702
	Tip 45/55A	MW 9-5618
	Tip 60/70A	MW 9-5707
Tip 80A	MW 9-5782	
Tip 105A	MW 9-5708	
3 Shield Cap Crown Ceramic	MW 9-5694	
4 Shield Cap Phenolic Std.	MW 9-5781	
5 Shield Cap Ceramic Std.	MW 9-5617	



For all trade name references, please refer to the last page for further information. Images may vary.

Miller Style Plasma Consumables

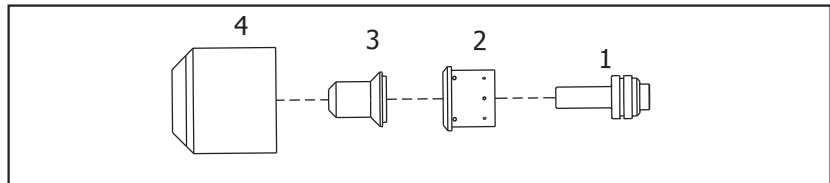
Models	Product Information & Specs	Part Number
ICE-25C Spectrum 375	1 Electrode	MW 176655
	2 Swirl Ring	MW 176657
	3 Tip	MW 176656
	4 Retaining	MW 176658



ICE-27C

Spectrum 375 CutMate

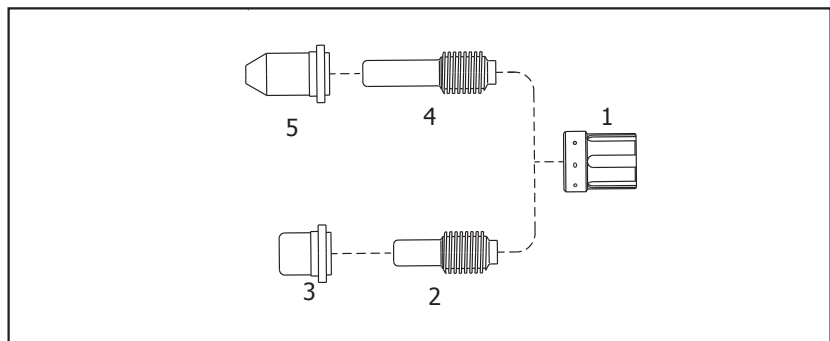
1 Electrode	MW 176655
2 Swirl Ring	MW 202809
3 Tip	MW 176656
4 Retaining Cap	MW 202808



ICE-27C

Spectrum 375 CutMate

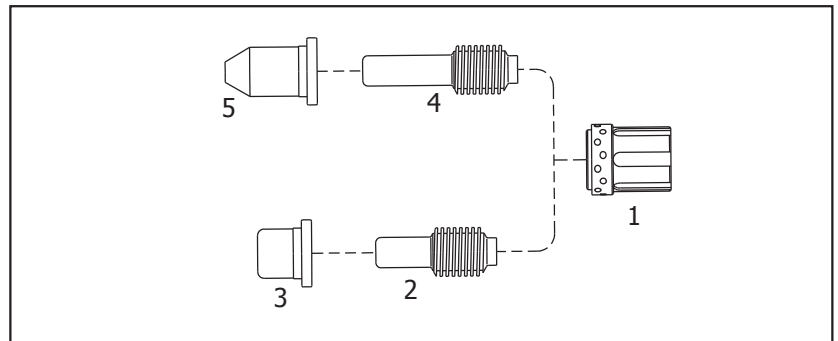
1 Swirl Ring	MW 177886
2 Electrode	MW 177875
3 Tip	MW 177890
4 Extended Electrode	MW 180340
5 Extended Tip	MW 177876



For all trade name references, please refer to the last page for further information.
Images may vary.

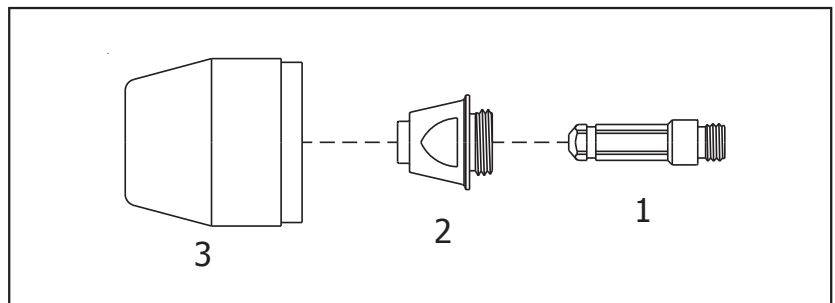
Miller Style Plasma Consumables

Models	Product Information & Specs	Part Number
ICE-55C/ICE-55CM Spectrum 625 Spectrum 2050	1 Swirl Ring	MW 192049
	2 Electrode	MW 192047
	3 Tip	MW 192051
	4 Extended Electrode	MW 192048
	5 Tip 55A Extended Tip 35A Extended	MW 192056 MW 192052



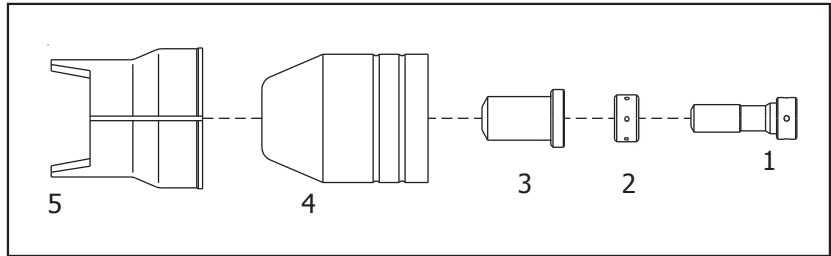
APT5000/7000

1 Electrode	MW 123-899
2 Electrode 50A Tip 70A	MW 123-898 MW 134-338
3 Shield Cap	MW 123-897



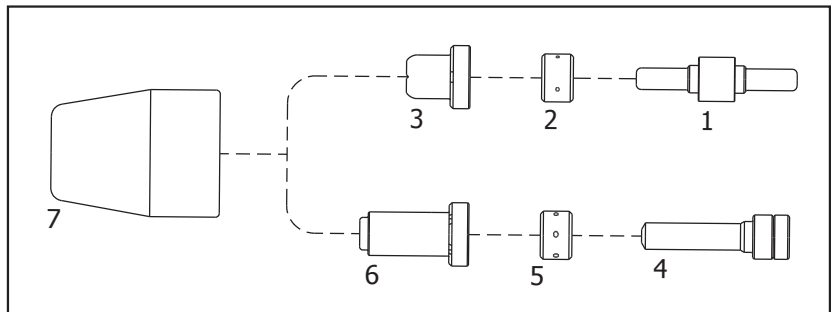
ESAB L-TEC Style Plasma Consumables

Models	Product Information & Specs	Part Number
PT-23/27	1 Electrode	MW 33366
	2 Swirl Baffle	MW 33367
	3 Tip 30A	MW 33368
	Tip 50A	MW 33369
	Tip 80A	MW 33418
4 Shield Cap	MW 21616	
5 Double Pointed Spacer	MW 21420	



PT-31 PT-31XL

1 Electrode	MW 18205
2 Swirl Baffle 4 Holes	MW 18785
3 Tip 4 Stakes	MW 18866
4 Electrode	MW 20862
5 Swirl Baffle 6 Holes	MW 20463
6 Tip 30A	MW 20860
Tip 40A	MW 21008
Tip 50A	MW 20861
7 Shield Cap	MW 18204



For all trade name references, please refer to the last page for further information.
Images may vary.

Masterweld Accessories

Models	Product Information & Specs	Part Number	
ARGON FLOWMETER REGULATOR	Inert flowmeter and regulator combined into a compact shielding gas delivery unit. The preset regulator and adjustable flow tube with calibrated markings. Sold in a box. CGA 580		ARFM-580
ARGON FLOWMETER REGULATOR w/10 ft. HOSE	As above with 6', 10', 12' hoses. Sold in a blisterpack. CGA 580	6' Hose 10' Hose 12' Hose	ARFM-ARH06 ARFM-ARH10 ARFM-ARH12
ARGON HOSES	1' Water Hose, w/ 5/8" X 1/4 MPT Fittings 10' Water Hose, w/ 5/8" X 1/4 MPT Fittings 12' Water Hose, w/ 5/8" X 1/4 MPT Fittings 25' Water Hose, w/ 5/8" X 1/4 MPT Fittings 50' Water Hose, w/ 5/8" X 1/4 MPT Fittings 100' Water Hose, w/ 5/8" X 1/4 MPT Fittings	1' 10' 12' 25' 50' 100'	ARH01 ARH10 ARH12 ARH25 ARH50 ARH100
WATER HOSES	1' Water Hose, w/ 5/8" X 1/4 MPT Fittings 10' Water Hose, w/ 5/8" X 1/4 MPT Fittings 12' Water Hose, w/ 5/8" X 1/4 MPT Fittings 25' Water Hose, w/ 5/8" X 1/4 MPT Fittings 100' Water Hose, w/ 5/8" X 1/4 MPT Fittings	6' 12' 25' 50' 100'	WH06 WH12 WH25 WH50 WH100
WELDING HELPERS	MIG Gun Stand w/ Magnetic Base TIG Torch Stand w/ Magnetic Base Electrode Holder Stand w/ Magnetic Base Cable Hitch for Any Arc Welding Position Weld Fillet Gauge - 11 Sizes Concave/Convex	Blue Yellow Red Red Brushed Metal	MI-MTS-M MI-TTS-M MI-EHS-M MI-CH-240 MI-WG-11



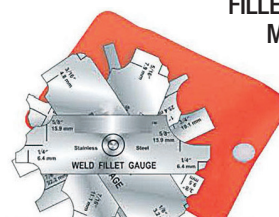
TIG STAND
MI-TTS-M



MIG STAND
MI-MTS-M



STICK STAND
MI-EHS-M



FILLET GAUGE
MI-WG-11



CABLE HITCH
MI-CH-240

For all trade name references, please refer to the last page for further information. Images may vary.

MASTERWELD PARTNERPLUS BECOME THE PARTNER THAT YOUR CUSTOMERS NEED!

DON'T LIMIT YOURSELF TO SELLING CONSUMABLES WHEN YOU COULD BE BUILDING YOUR BRAND!

The MasterWeld Private Label program helps you build your brand. Inform end users who to purchase from by putting your brand on the packages they purchase. Private label gives you increased marketing without the effort. It's a simple way to advertise with the packages your customers and those around them are seeing every day. And don't worry about lead times. With MasterWeld's extensive network, delivery times remain the same.



OUR MASTERWELD PRIVATE LABEL PROGRAM INCLUDES:

- Your company name and logo
- Your phone number and web address to make it easy to find you
- Your UPC code for easy inclusion into your inventory system

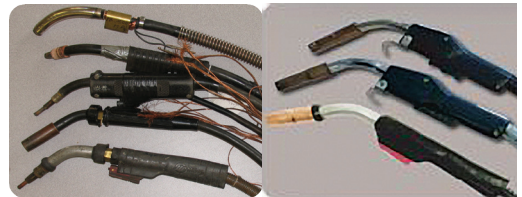
MIG GUN REPAIRS MADE AFFORDABLE BY MASTERWELD!

3 EASY STEPS:

- Call us at 1 800-346-5368 to confirm the repair
- Send your guns to us with a PO or a request for a quote
- We will send you a quote and only charge for repairable guns with your approval! How simple is that?

BEFORE

AFTER



MASTERWELD CAN CUSTOMIZE GUNS FOR OLD OR OBSOLETE MACHINES!

- CHOOSE THE AMPERAGE
- CHOOSE THE LENGTH
- CHOOSE TW OR MI STYLE CONSUMABLES

Craftsman™
Century™
Napa™
Snap-On™
Solar™



MASTERWELD'S MIG GUN EXCHANGE!*

STUCK WITH GUNS YOU CAN'T SELL? LET US TAKE THEM AND GIVE YOU SOMETHING FOR THEM!

RECOUP YOUR COSTS IN 2 EASY STEPS:

- STEP 1: SEND US YOUR NEW OR UNUSED GUNS – ANY BRAND
STEP 2: WE GIVE YOU A CREDIT TOWARD THE PURCHASE OF NEW PRODUCTS FROM MASTERWELD

TURN THAT EXCESS STOCK LANGUISHING ON YOUR SHELVES INTO PRODUCTS THAT SELL!



* Valid only on new or unused guns.
For all trade name references, please refer to the last page for further information.
Images may vary.